

## Global Water Partnership Central and Eastern Europe



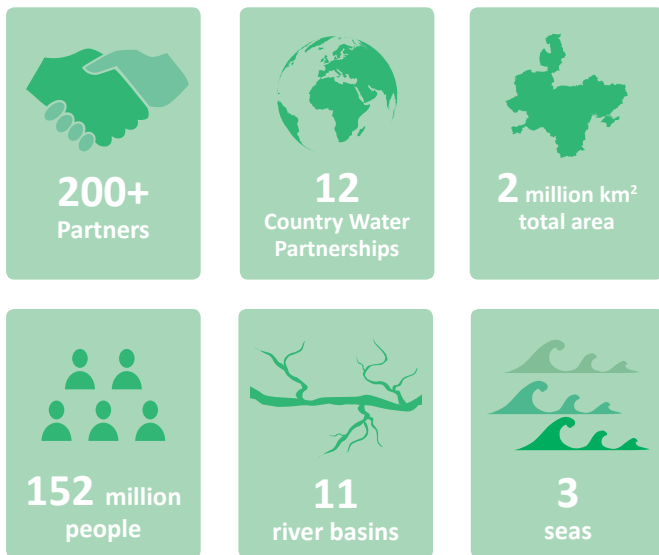
**Global Water Partnership Central and Eastern Europe (GWP CEE)**, established in 1998, comprises 12 Country Water Partnerships and involves more than 200 Partners located in 15 countries. It is an international network open to all organisations involved in water resources management: government agencies, professional associations, research institutions, non-governmental organisations, and the private sector.

The main mission of GWP CEE is to support the countries of Central and Eastern Europe in the sustainable development and management of their water resources.

GWP CEE is a part of the global GWP network that consists of thirteen regions: Caribbean, Central Africa, Central America, Central and Eastern Europe, Central Asia and Caucasus, China, Eastern Africa, Mediterranean, South America, South Asia, Southeast Asia, Southern Africa and West Africa.

*Towards a water secure world*





## BRIDGING POLICY, KNOWLEDGE AND PRACTICE IN CENTRAL AND EASTERN EUROPE

### Global Water Partnership Central and Eastern Europe brings:

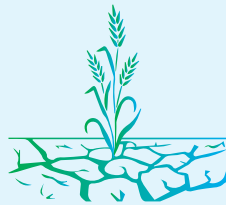
- 💧 Transboundary cooperation
- 💧 Knowledge and awareness
- 💧 Capacity development
- 💧 Innovative approaches in IWRM
- 💧 Youth empowerment

## OUR FOCUS

### Enhancing drought resilience

*Since 2013*

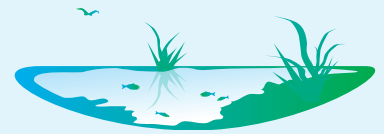
The Integrated Drought Management Programme in CEE (IDMP CEE) aims at enhancing drought resilience in the Central and Eastern Europe. It helps build up capacities of target groups for a proactive integrated drought management approach by improving drought monitoring and unification of drought impacts and risk assessments. IDMP CEE fosters dialogues between the scientific and policy-making communities for integrating water security and drought resilience into national development planning and decision-making processes.



### Nature-based solutions

*Since 2013*

GWP CEE promotes natural small water retention measures (NSWRM) principles as environmentally friendly and cost-effective solutions. By implementing these principles in multiple projects, GWP CEE is building understanding of the stakeholders on NSWRM as part of Integrated Water Resource Management (IWRM). By using the NSWRM approach in a systematic way, the buffer capacity of the landscape will be increased and the regional common framework for floods, droughts and pollution mitigation will be strengthened.



### Sustainable Sanitation

*Since 2007*

The issue cuts across sectors of water, environment and rural development, addressing the demands of the poor and of populations in small settlements. In 2007, GWP CEE established a Sustainable Sanitation Task Force to provide technical support and advice to the network. It produced several knowledge products and proposals on decentralized sanitation. A study by the regional Sustainable Sanitation Task Force indicated that 20 million Europeans are lacking access to sanitation services. This issue is reflected in multiple projects and initiatives, where GWP CEE aims to bridge the gap between legislation, current practice and integrated approaches, as well as to broaden the knowledge about wastewater treatment alternatives.



### Supporting countries to reach the SDGs

*Since 2013*

GWP CEE plays a role in the global SDG Preparedness Facility Programme, which supports countries in their commitment to the post-2015 Development Agenda, GWP Hungary and GWP Moldova have provided practical support for the implementation of SDG 6 and other water-related SDGs in their countries. As part of the joint global initiative with UNEP-DHI Centre and Cap-Net UNDP that connects a unique blend of partners representing governments, civil society and the private sector, GWP CEE has organised national consultation workshops in Bulgaria, Slovakia, Slovenia and Ukraine to consult and engage with stakeholders to assess the implementation, monitoring and reporting process for indicator 6.5.1.

