

WELCOME

TO

BANGLADESH AGRICULTURAL DEVELOPMENT CORPORATION

BADC's Irrigation Activities for facing Drought

Presented by
Engr. Md. Lutfor Rahman
Deputy Chief Engineer
BADC, Dhaka

Bangladesh Agricultural Development Corporation (BADC) was established on 16 October 1961 with the mandate to supply the most vital agricultural inputs like seed, fertilizer and irrigation and to provide services to the farmers.



Main Cereal Crops:

● Aus

● Aman

● Boro

Rain-fed crop

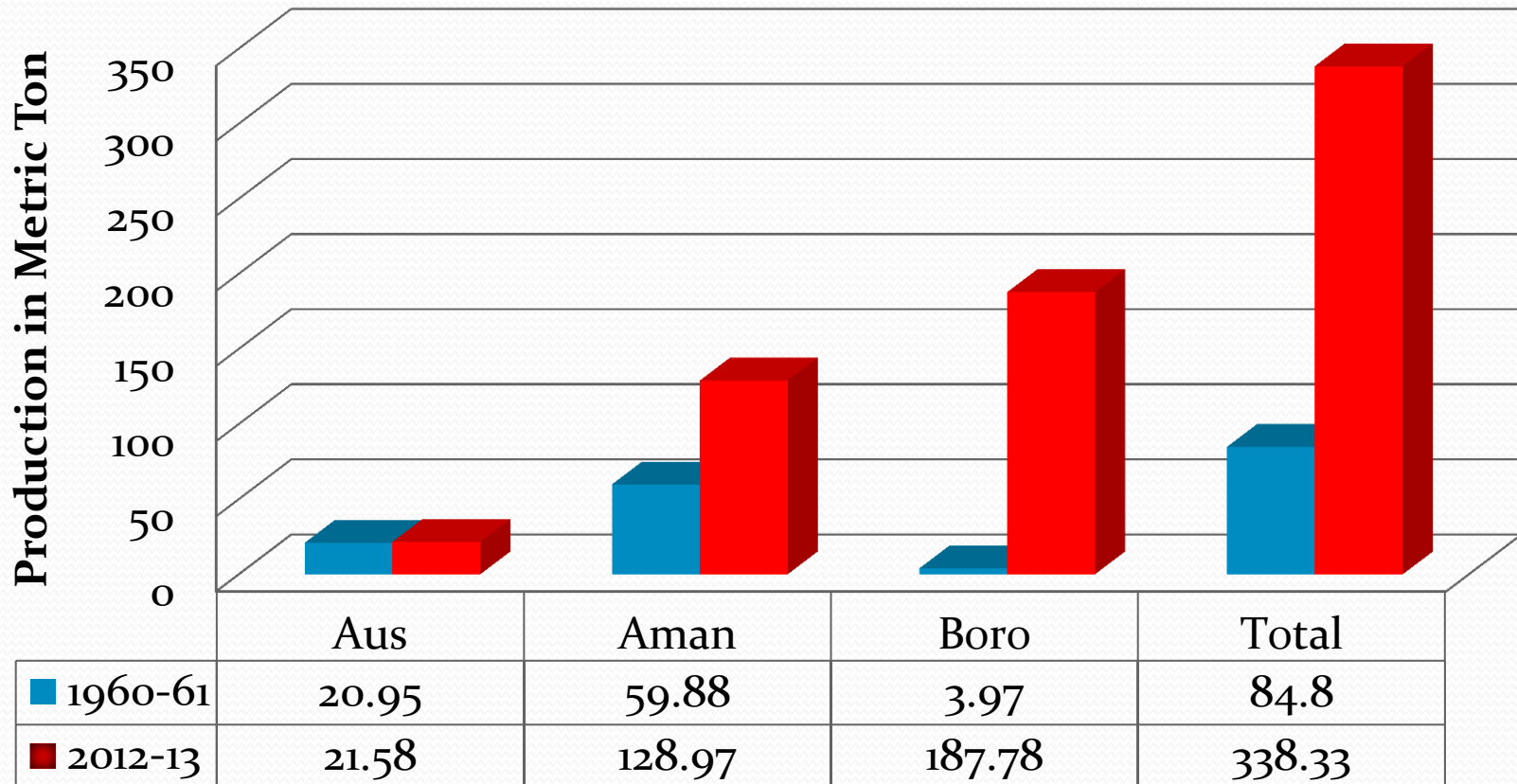
Irrigation dependent crop

■ Rain-fed crop T. Aman is mostly facing **Drought** at different stage:

- Land preparation
- Booting stage
- Flowering stage



□ Difference in Rice Production



● Source: BBS, AIS

* Aman- 2.14 times

* Aus- 1.02 times

* Boro - 47 times

□ Irrigation Equipment Used in 2013-14

(in million)

Type of Equipment	Nos. in operation			Percent of Total	
	Diesel	Electric	Total	Diesel	Electric
LLP	0.16	0.01	0.17	94%	6%
DTW	0.003	0.033	0.036	8%	92%
STW	1.29	0.27	1.56	83%	17%



❑ **Problems of Supplemental Irrigation**

- As it a rain-fed crop, farmers are waiting for rain due to lack of awareness;
- **Most of irrigation equipment's and transformer of electrified equipment's are kept to their house after Boro production;**
- The secondary and tertiary irrigation channel, some cases the main channel are broken at the time of T. Aman transplantation.

□ Re-excavation of Khal

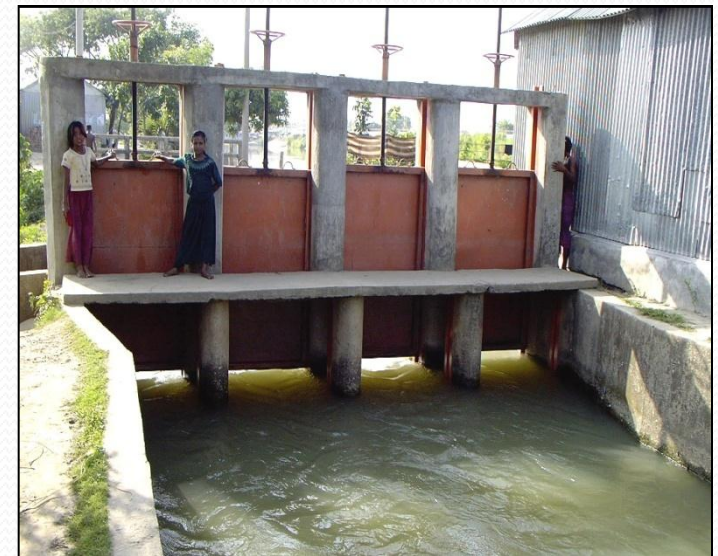
- Re-excavation of khal- 5410 km.





❑ Construction of Rubber Dam

- Hydraulic infrastructures like cross dam, submerged weir, sluice gate etc. are constructed during these time to make water reservoir so that farmer can easily use the water for irrigation and also for supplemental irrigation.



❑ Construction of Rubber Dam

- Constructed Rubber Dam- 4 Nos.
- Under construction-2 Nos.



□ Surface & Sub-surface Irrigation Channel

● Surface Channel-803 km.

● Sub-surface Channel
-1842 km.



□ Use of Hose Pipe

● Supplied hose pipe- 51,500 m



❑ Digital Mini Weather Station



☐ Monitoring System



AWS
SENSOR

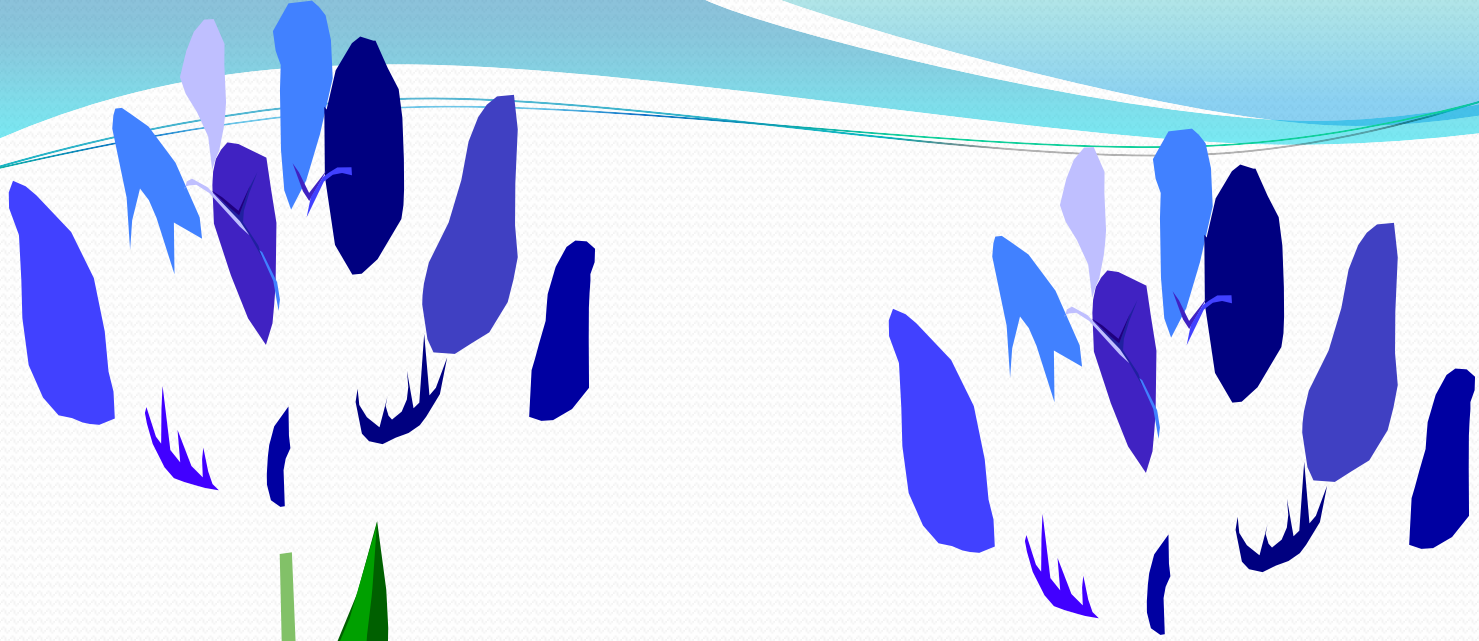
LOGGER &
MODEM

SERVER

REPORT

□ Recommendation

- All irrigation equipment's specially in the drought prone area should be brought under buried pipe system with the provision of hose pipe;**
- Electricity connection must be available so that irrigation equipment can operate when need;**
- Program should be taken to create awareness of the farmer about to keep their earthen channel all over the year;**
- Introduce drought monitoring and forecasting.**



Thank You All

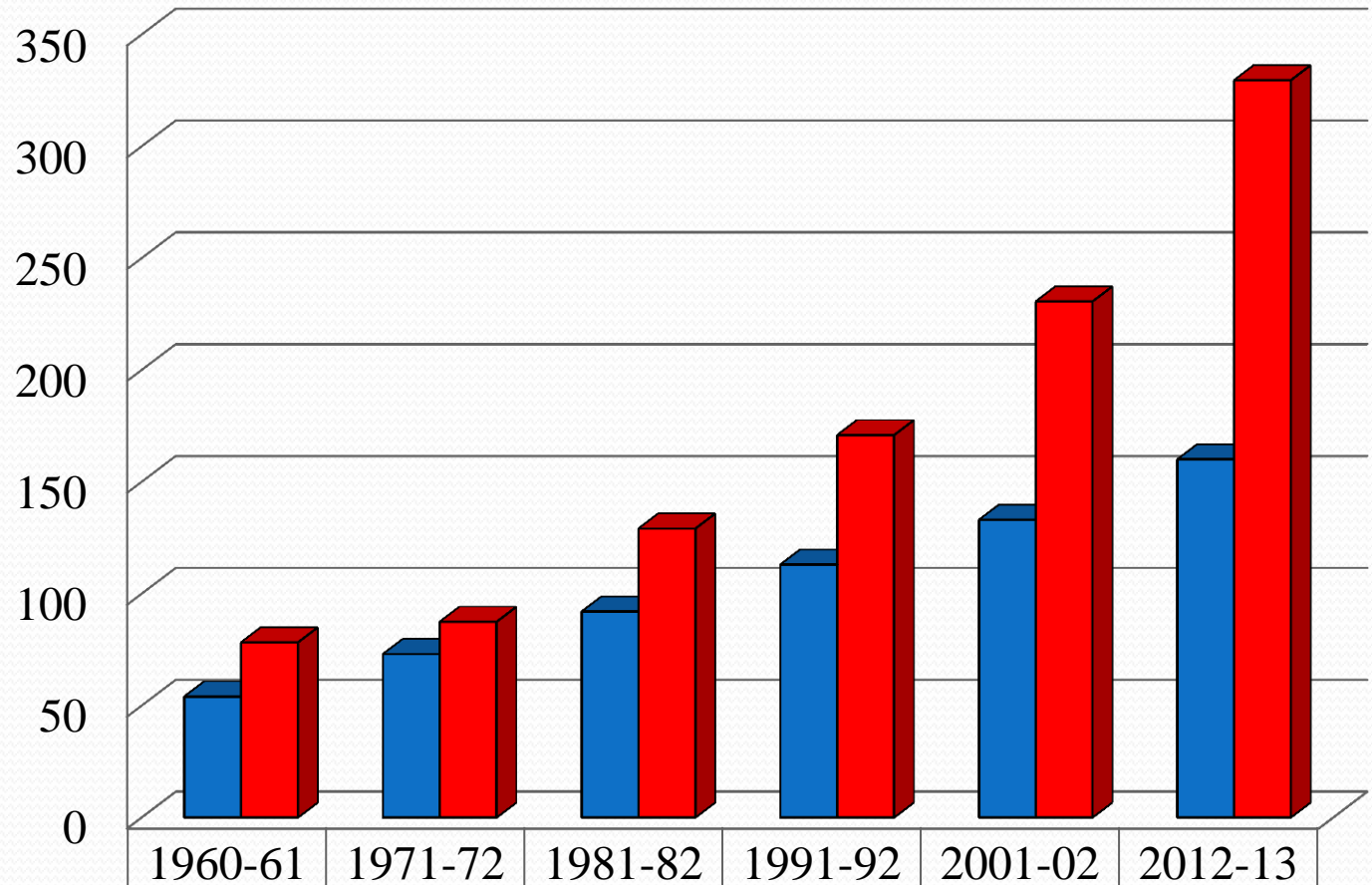


Drought is a deficiency of precipitation over an extended period resulting in a shortage of water causing adverse impact on vegetation, animals and /or people.





❑ Comparison with Population & Food Production



■ Population (Million)	54	73	92	113	133	160
■ Productio (Lakh MT)	78.2	87.44	129.07	170.85	230.58	329.5

296%

421%

Population

Production

From 1961 to 2012