

A large, dynamic splash of clear water is the central focus of the slide, set against a white background. The splash is captured in mid-air, with numerous droplets and a crown-like shape at its base. The water is bright blue and white, creating a sense of movement and freshness. In the top left corner, there is a decorative border of blue and green water ripples. On the right side, there is a vertical map of the Maldives, with several islands highlighted in red and blue. The text is overlaid on the left side of the splash.

Ministry of Environment and Energy
Water & Sanitation
Drought monitoring mechanism in Maldives

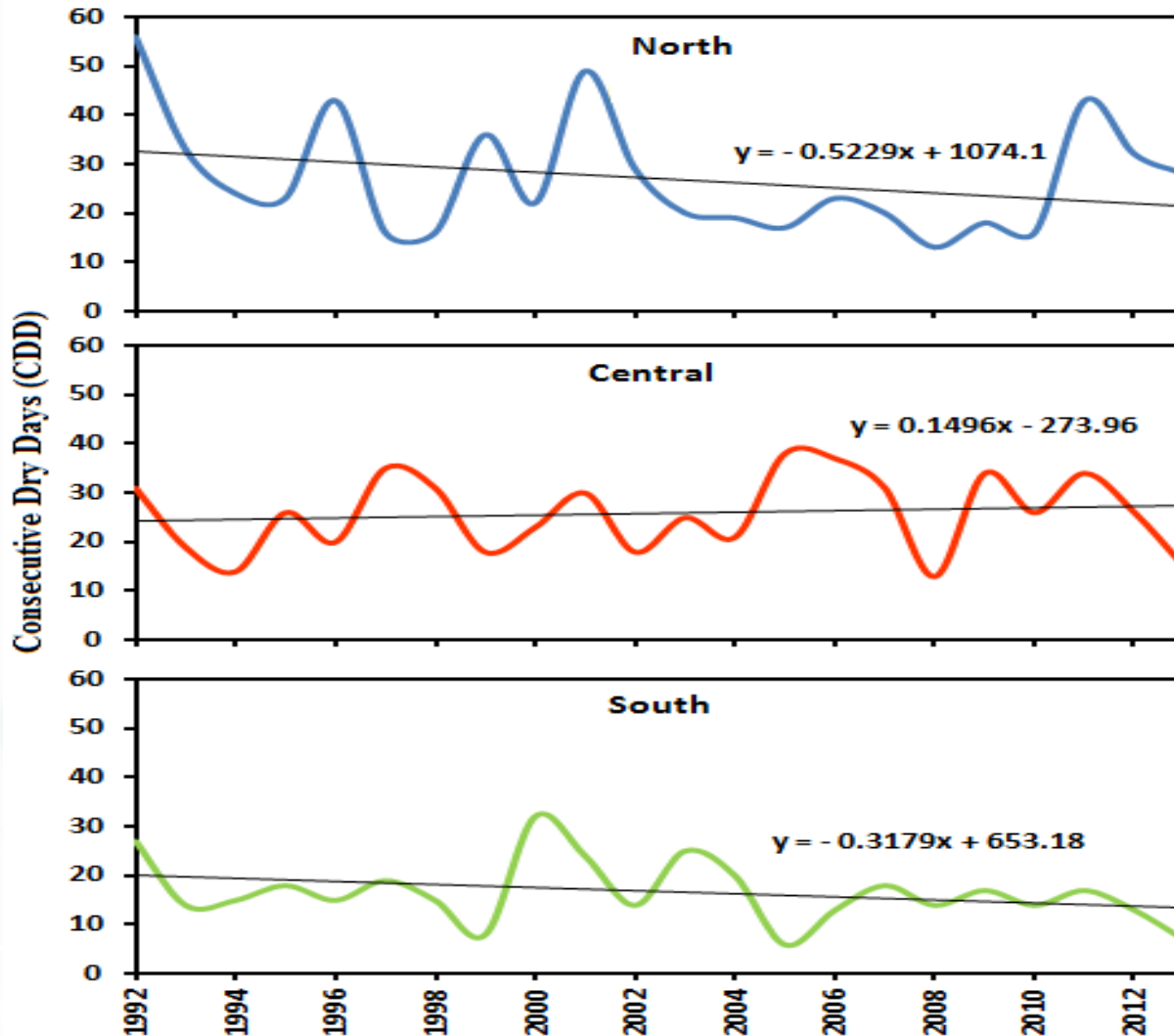


DROUGHT MONITORING MECHANISM

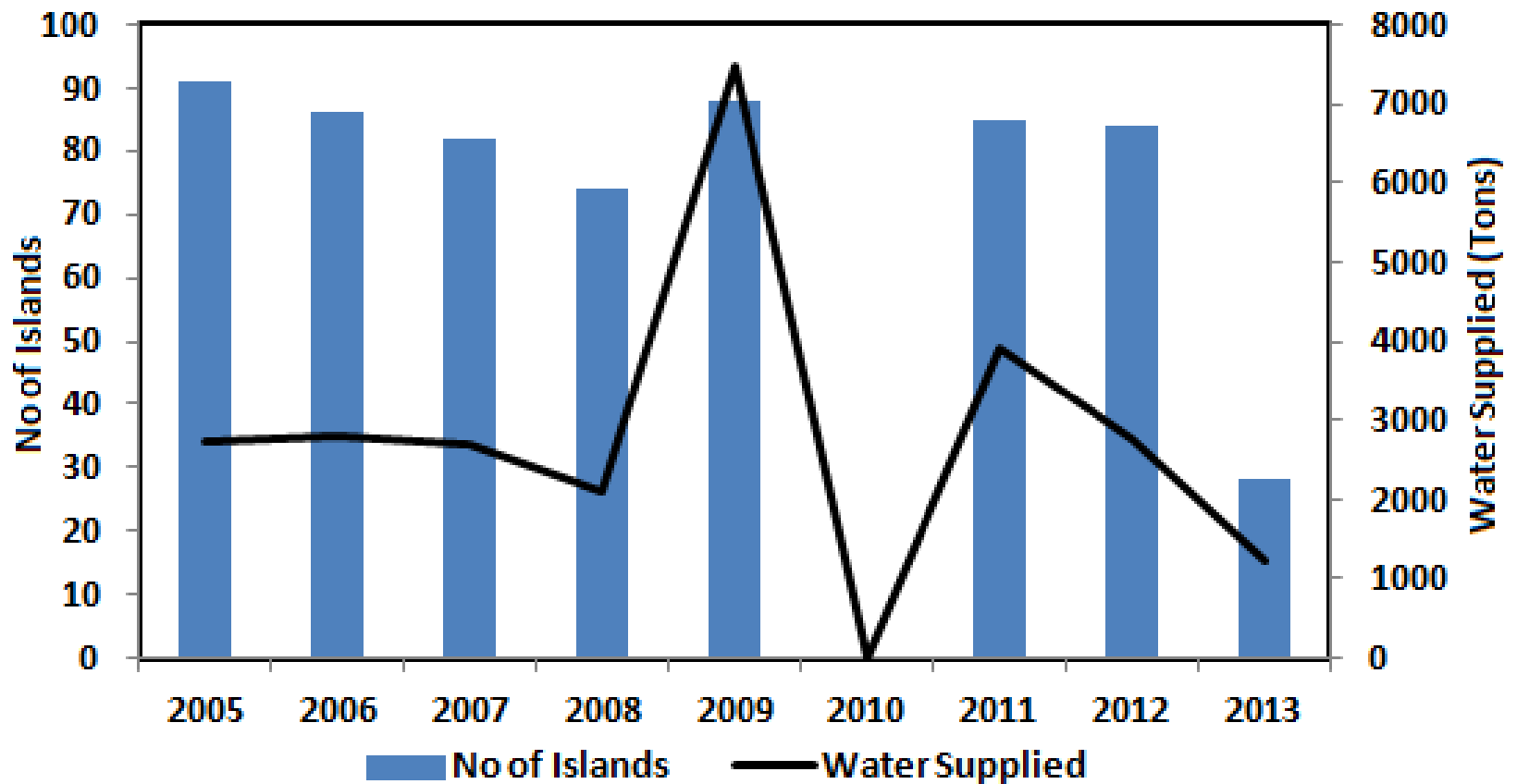
- Rainfall patterns
- Request for water from islands



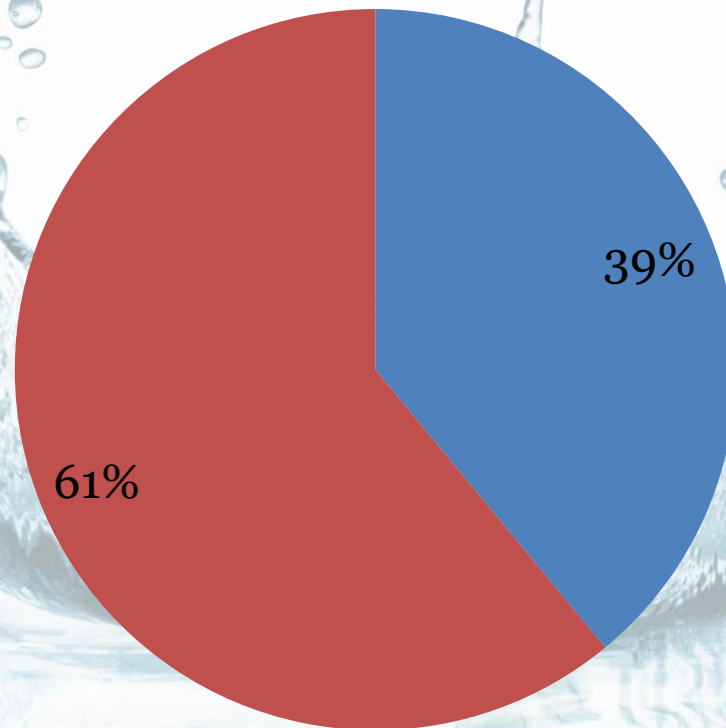
RAINFALL PATTERNS, ANNUAL MAXIMUM CONSECUTIVE DRY DAYS



DROUGHT MONITORING MECHANISM - REQUEST FOR WATER FROM ISLANDS



PIPED WATER COVERAGE. COUNTRY (POP. PERCENTAGE)



- Popl. with Water Supply Network
- Popl. without Water Supply Network

WATER

Number of Islands and Population with improved water supply systems

