

Current drought monitoring activities

SRI LANKA

In Sri Lanka

At present there is no drought early warning system in operation.

However, drought situation in the country is monitored through real time rainfall and reservoir related information.

Collection of rainfall information:

Department of Meteorology maintains about 400 rain gauge stations

Irrigation Department maintains about 100 rain gauge stations

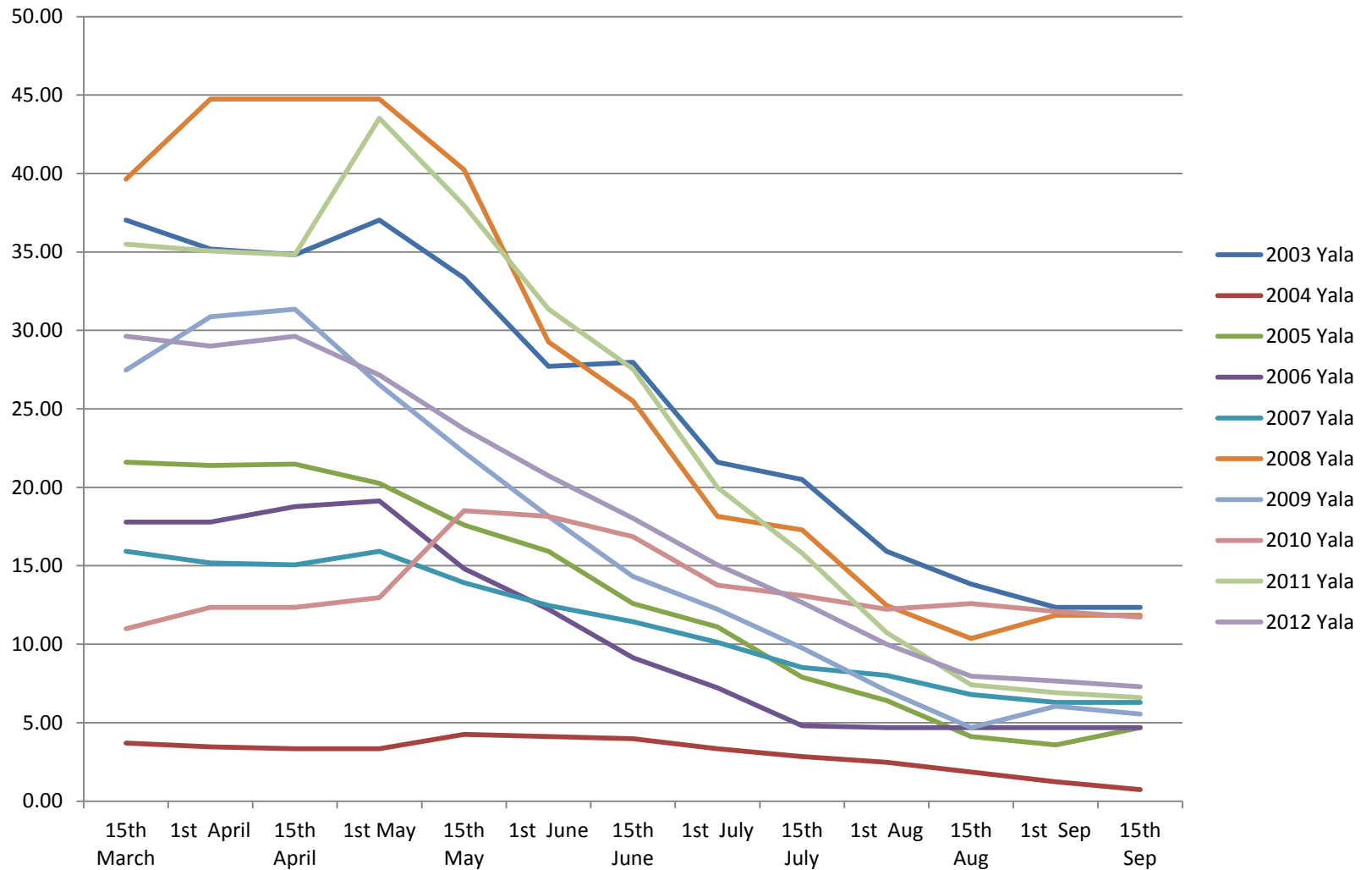
Comparison of the observed rainfall situation with average conditions results in identifying the dry/normal/wet condition.

Reservoir Storage

- Irrigation Dept. is maintaining daily storage records of 250 numbers Reservoirs.
- Daily storage and sluice issues are monitored at Head office level also.
- The graph of monthly storage Vs Month is being drawn and compared with annual graphs.
- More attention on field water management is taken in drought years.

Mahakantharawa Reservoir

(March to September) Storage (MCM) 2003 to 2012



Cultivation data

- Seasonal cultivation calendar, crop area etc . are decided at cultivation meeting based on available storage and seasonal forecast.
- Crop area can indicate the drought situation.

2013/2014 Maha cultivation affected by Drought

Name of Irrigation Division	Total irrigable Area (Ha.)	Cultivated area (Ha.)	Not Cultivated area (Ha.)	% of Not Cultivated
Anuradhapura Irrigation Division	9011	3865	5154	57%
Padaviya Irrigation Division	8425	1534	6889	82%
Huruluwewa Irrigation Division	9471	6832	2636	28%
Rajangana Irrigation Division	7850	7591	259	3%
Gomaranka' Irrigation Division	2788	925	1863	67%
Puttalam Irrigation Division	2703	1856	849	31%
Inginimitiya Irrigation Division	2878	839	2039	71%
Galgamuwa Irrigation Division	3194	569	2625	82%
Katugampola Irrigation Division	930	723	207	22%
Minneriya Irrigation Division	10923	10587	336	3%
Nikaweratiya Irrigation Division	3243	2660	583	18%
Vavuniya Irrigation Division	2762	467	2294	83%
Murunkan Irrigation Division	12178	2034	10145	83%

2014 Yala cultivation affected by Drought

District	Specified Irrigable Area (Ha)	Cultivated Area (Ha.)	Not Cultivated Area (Ha.)	% of not cultivated	Crop failure area (Ha.)
Ampara	81,817	51,319	30,498	37%	130
Annudharapura	37,285	14,765	22,521	60%	874
Badulla	9,183	5,974	3,209	35%	39
Baticoloa	21,499	16,099	5,400	25%	-
Colombo	16,014	8,380	7,634	48%	111
Galle	23,859	9,948	13,911	58%	185
Hambantota	24,134	22,936	1,198	5%	152
Kandy	13,616	10,979	2,637	19%	132
Kurunagala	19,777	17,023	2,754	14%	1572
Monagala	7,062	4,471	2,591	37%	348
Polonnaruwa	32,218	20,243	11,976	37%	-
Puttalam	7,176	5,698	1,477	21%	84
Trincomalee	21,010	11,306	9,704	46%	-
Vavuniya	2,759	499	2,260	82%	-
Mannar	12,912	1,903	11,009	85%	-
	330,322	201,543	128,780	39%	3,626

2014/2015 Maha cultivation affected by Floods

District	Specified Irrigable Area (Ha)	Flood damaged Area (Ha.)
Ampara	81,817	2,088
Annudharapura	37,285	14,009
Badulla	9,183	3
Baticoloa	21,499	9,661
Colombo	16,014	7
Galle	23,859	78
Hambantota	24,134	474
Kandy	13,616	556
Kurunagala	19,777	306
Monagala	7,062	432
Polonnaruwa	32,218	4,300
Puttalam	7,176	1,236
Trincomalee	21,010	10,328
Vavuniya	2,759	268
Mannar	12,912	1,600
	330,322	45,386

Climate Outlook Forum

Conducted by the Department of Meteorology

Seasonal forecast issued at the Climate Outlook Forum is used in deciding the crop type/extent

All stakeholders attend the Forum