

## THE SADC WEF NEXUS DIALOGUES PROJECT

The SADC WEF Nexus Dialogue Project “Fostering Water, Energy and Food Security Nexus Dialogue and Multi-Sector Investment in the SADC Region” is a project supported by the European Commission as part of the global ‘Nexus Dialogues Programme’. Phase I of the Nexus Dialogues Programme ran from 2017-2019 and aimed at helping regional organisations, and their member states apply a nexus approach in formulating multi-sector policy recommendations, strategies, action plans and investment programmes.

### KEY RESULTS FROM PHASE I

The key results achieved from Phase I include:

- Establishment of a SADC Regional WEF Nexus Governance Framework.
- The development of a SADC WEF Nexus investment project screening and appraisal tool; and,
- Development of a prioritised list of Nexus Investment Projects

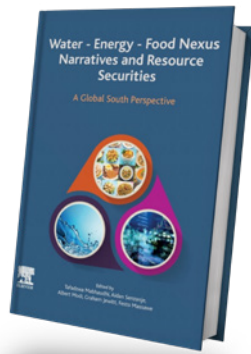


Figure 1: Published book chapter (Chapter 8)

### PHASE II

The project is currently implementing Phase II which commenced in 2020 until 2023. This phase builds on the achievements of the first phase, with the overall objective being to institutionalise the WEF Nexus approach at regional and national governance structures and investment decisions for water, energy, and food security in the SADC region.

## PROJECT SPECIFIC OBJECTIVES

The specific objectives of Phase II are to:

- Increase application of the Nexus approach in planning, policymaking and implementation and,
- Increase interest from the public and private investors for projects applying the Nexus approach
- Identifying and accelerating WEF nexus investments in the SADC region

### EXPECTED OUTCOMES

Two major outputs are expected from the project:

- Increased application of the Nexus approach in planning, policy making, and implementation.
- Increased interest from public and private investors for projects applying the Nexus approach.

### APPROACH AND ACTIVITIES

The following are the key project activities.

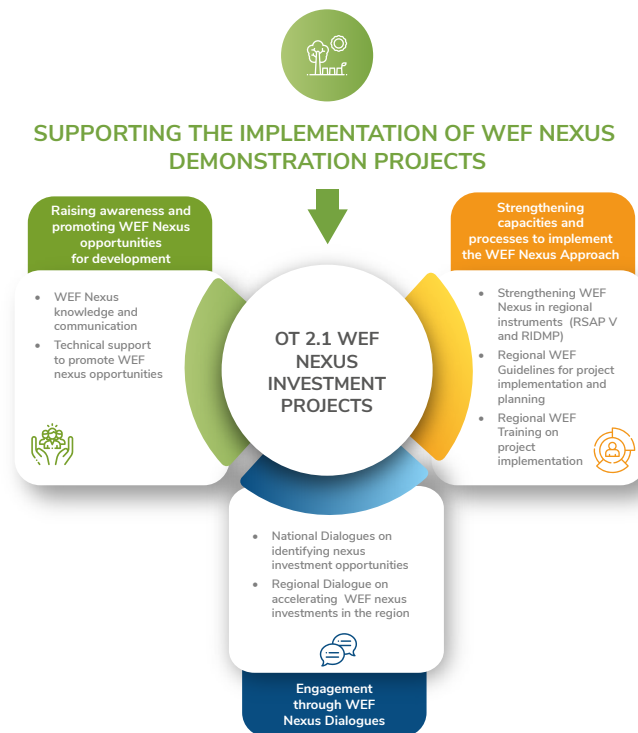


FIGURE 2: Phase II outputs and activities

## KEY RESULTS (as of October 2022)

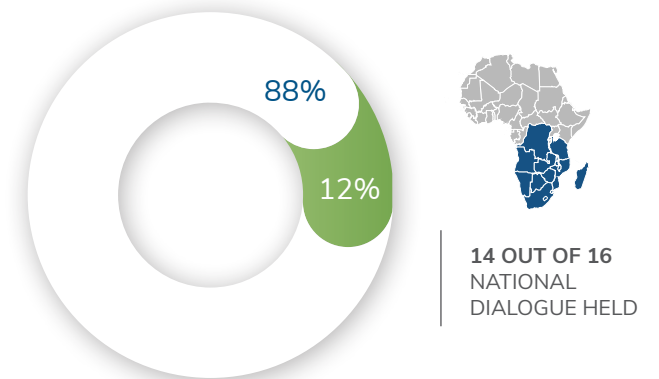


FIGURE 3: Number of WEF national dialogues held in the SADC region

88%

#### NATIONAL DIALOGUES HELD:

- Angola
- Botswana
- Democratic Republic of Congo
- Eswatini
- Lesotho
- Madagascar
- Malawi
- Mauritius
- Mozambique
- Namibia
- United Republic of Tanzania
- Zambia
- Zimbabwe

12%

#### REMAINING NATIONAL DIALOGUES:

- South Africa
- Comoros

The national dialogues aim to strengthen capacity on the WEF Nexus, especially in conducting WEF nexus analysis to inform decision making. The overall objective of the SADC WEF Nexus National Dialogues is to identify national WEF nexus priorities and showcase the benefits of how improved sectoral coordination can accelerate national investment opportunities.

## FOR MORE INFORMATION CONTACT:

### Global Water Partnership Southern Africa

333 Grosvenor Street, Hatfield Gardens,  
Block A, Pretoria, South Africa

+2712 430 2121/7

gwpafrica@gwpsaf.org

www.gwp.org/en/GWP-SouthernAfrica/

@GWPSAF

@GWPSouthernAfrica

Global Water Partnership Southern Africa

### Southern African Development Community (SADC)

Plot 54385 New CBD, P. Bag 0095,  
Gaborone, Botswana

+267 364 1709

+267 395 1863 (ext1709)

www.sadc.int

@sadc\_news

@sadc.int

youtube.com/sadc.int

This publication has been produced with the assistance of the European Union. The contents of this publication are the sole responsibility of SADC and GWP and can in no way be taken to reflect the views of the European Union.



## ENGAGEMENT THROUGH REGIONAL DIALOGUES

The 10th SADC Multistakeholder Dialogue was held from 5 to 7 September 2022 at Avani Maseru hotel in the Kingdom of Lesotho under the main theme 'Bolstering regional productive capacities for water, energy, food security and ecosystem resilience to achieve inclusive and sustainable industrial transformation'.

## TECHNICAL SUPPORT TO THE DEVELOPMENT OF INVESTMENT PROJECTS

The project is providing technical assistance in incorporating the WEF Nexus approach in the following projects

- Upscaling solar powered irrigation demo projects in Malawi and Zambia.
- Land Degradation Neutrality Transformative Projects and Programmes (LDN TPP) in South Africa
- Strengthening knowledge and capacity for the implementation of WEF Nexus adaptation interventions for improved climate resilience in Lesotho
- Strengthen integrated source to sea management for sustainable development of SADC's Incomaputo Commission

## STRENGTHENING CAPACITIES AND PROCESSES TO IMPLEMENT NEXUS APPROACH

The project is currently providing technical support in the development of the following technical documents:

- WEF Nexus Regional Guidelines Document
- Strengthening the WEF Nexus approach in the development of the second RIDMP Short Term Action Plan (RIDMP STAP II)
- Roadmap for guiding WEF Nexus planning, adoption and investment planning in the SADC region



Fostering a  
**Water, Energy and Food  
security Nexus dialogue**  
and multi-sector investment  
in the SADC region:

**PHASE II**



**FINANCING:**  
European Union (EU)

**IMPLEMENTING AGENCY:**  
GWPSA on behalf of SADC

**DURATION:**  
2020-2023