

Work Programme Management Manual

DRAFT – 21 November 2013



www.gwp.org

Document History

Date	File Name	Description
15 August 2012	GWP Programme Mangement Manual_v5.docx	For discussion during the August 2012 “Regional Days”, Stockholm
23 November 2012	GWP Programme Mangement Manual_v6.docx	Detailed Monthly reports for both Communication and Monitoring purpose
01 February 2013	GWP Programme Mangement Manual_v7.docx	Draft GWP Results Framework and indicators
01 August 2013	GWP Programme Management Manual_v8	Indicators data sheets Dealing with projects New Strategy (3 goals)
21 November 2013	GWP Programme Management Manual_v9	New and updated indicator data sheets New Strategy figure

Global Water Partnership

Work Programme Management Manual

Table of Contents

Table of Contents.....	3
Introduction	5
1. GWP Work Programme Management	5
Planning	6
Monitoring and Reporting.....	7
Annual Sequence	7
2. Information provided by GWP entities.....	9
Request A: Input to Annual Progress Review	9
Request B: Annual Workplan.....	15
Request C: Inputs to GWP Annual Report - <i>GWP in Action</i>	20
Request D: Monthly Communication & Monitoring Reports.....	22
Request E: Quarterly Financial Reports TO BE UPDATED	25
3. Work Programme Management Documents	26
Table of contents of GWP Workplan documents	27
Table of contents of GWP Annual Progress Review	28
4. Annex A Background on GWP Work Programme	29
GWP Strategy	29
GWP Work Programme.....	31
GWP Delivery Mechanisms	32
5. Annex B GWP Simplified Results Framework.....	34
GWP simplified Results Framework.....	34
Detailed description of GWP Results Framework indicators	37
Monitoring Datasheet by entity	62
Towards monitoring of Impact through key Water Governance Outcomes	63

Introduction

The GWP Work Programme Management processes are being continuously improved and simplified. The processes are based on a unique mix of Outcome Mapping and Logical Framework Analysis methodologies.

The overall objective of this manual is to present the various operational elements of the GWP work programme management process as they have evolved in a summarised manner enabling the various entities within the GWP network to apply them through a common approach. We have attempted to simplify and synergise all existing planning, implementation, monitoring and evaluating/reporting procedures.

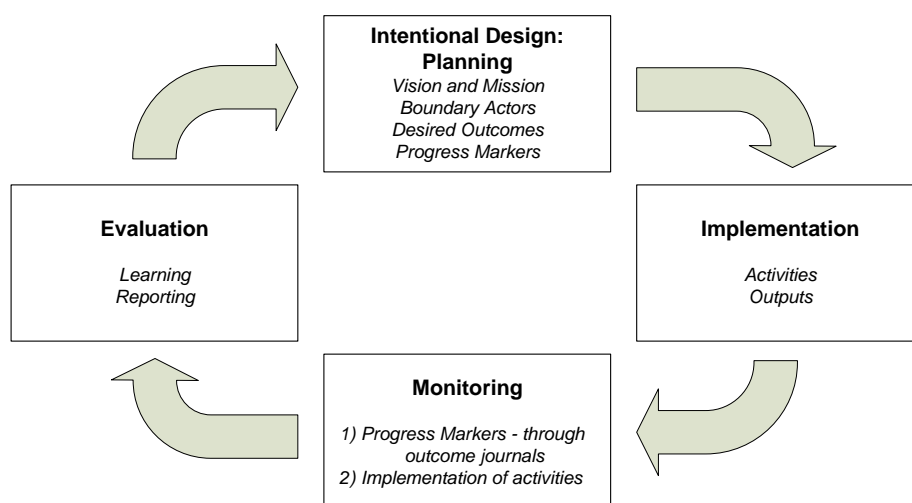
A few pointers are given as to how the GWP monitoring system may continue to evolve in future to further improve and simplify its Results Based Monitoring.

Important introductory notes:

1. The parameters set by the GWP's Strategy, Work Programme and delivery mechanisms are presented as background in Annex A. It is important to bear these in mind in order to fully understand the context within which the GWP monitoring system has been developed.
2. GWP is continuously strengthening its results framework, blending Logical Framework Analysis (LFA) components into its Outcome Mapping methodology. The latest LFA developments are presented in Annex B. This structure is currently being incorporated into the existing monitoring process and information on impact and output indicators is included in the request for a monthly Communication and Monitoring report from each Regional Water Partnership (RWP). Further adjustments may be necessary as GWP LFA evolves.
3. It is important to note that the GWP entities' workplans reflect an annual "portfolio overview" of their activities. These activities are developed through various processes and often packaged in the form of *projects*. The processes leading to the development, review and internal approval of these projects, while being integral part of the programme management, *are not detailed hereafter*¹.

1. GWP Work Programme Management

Work planning, implementation, monitoring and evaluation/reporting in the GWP follows a classic management cycle augmented by concepts of Outcome Mapping (OM):



¹ These aspects are dealt with in the complementary document: "GWP Global and Thematic Programmes and Projects Management Manual"

GWP's Outcome Mapping-based Work Programme Management Cycle

OM has been applied within the GWP since 2007. It inherently recognises that direct *attribution* of outcomes² is not possible in policy and advocacy organisations such as GWP which don't directly deliver tangible "outcomes" on the ground but rather set the stage for such results. OM methodologies seek to identify and report on the *plausible linkages* among outputs and outcomes across this *attribution gap*.

Planning

With the aim of achieving the three goals of the GWP strategy, each entity of the GWP system contributes to implementing the overall GWP Work Programme by undertaking activities at global, regional, national and/or local level.

The GWP Work Programme

The Work Programme for achieving the 3 strategic goals is spelled out in:

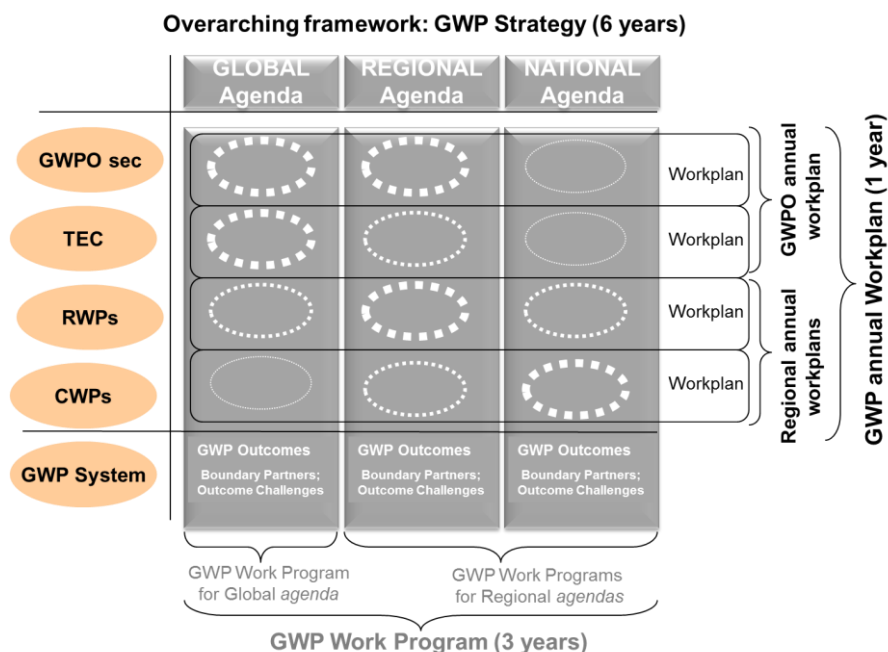
- One **global Work Programme**, addressing the needs and priorities of the global agenda
- Thirteen **regional Work Programmes** addressing the needs and priorities of the regional agenda in each of the thirteen regions where the GWP network is active

The consolidation of these 14 Work Programmes forms the **GWP Work Programme**.

Annual work plans

The set of activities implemented by a particular entity³ is described in the **annual workplan** developed by each entity. The consolidation of the entities' workplans forms the **GWP annual workplan**.

The implementation framework - synergies in the work plans of GWP entities



Remark: Thematic management

² **Outcomes** are defined as : "changes in relationships, activities, actions, or behaviour of boundary actors that can be plausibly linked to a programme's activities, although they are not necessarily directly caused by it" (IDRC, 2001).

³ Entities within the GWP Network include the 13 RWPs and the GWPO (comprising the Secretariat and the Technical Committee).

In addition to being packaged geographically, the GWP portfolio of activities described in **the GWP annual workplan** can also be packaged by themes according to the strategic elements listed in the GWP Strategy. This packaging provides an opportunity to create linkages on the substance of activities carried out across the whole network, consolidate results and raise funds for specific result areas.

Monitoring and Reporting

GWPO primarily uses **three key reporting mechanisms** to collect monitoring information from the GWP entities⁴. These are as follows:

1. Monthly Communication and Monitoring reports. These reports are produced according to criteria established jointly by the GWPO Communications and Network Operations Units. They fulfil a dual purpose in terms of communication (production of NewsFlow) and programme monitoring.
2. Quarterly reports. The quarterly financial reports are produced according to criteria established by the GWPO Finance and Administration Unit mainly to monitor and approve financial disbursements. (Quarterly narrative reports are produced for specific projects).
3. Annual monitoring report on: (i) progress markers and logframe indicators, (ii) planned / achieved activities and (iii) self-assessment on progress around critical GWP functions. This report provides an annual feedback on observed changes in the water sector against progress markers established as goalposts towards the outcome challenges identified and spelled out in the three-year GWP Work Programme. The report also gives feedback on progress relating to targets set on specific outcome and output indicators and assesses whether the main activities planned have been implemented. This feedback is complemented by a self-assessment on governance and management performance completed by each entity.

Based on this information, GWPO produces **three consolidated reports and one Newsletter**:

- **GWP Annual Progress Review**: This report is an account of achievements, difficulties encountered and challenges ahead. It is produced annually and is the main vehicle to inform the Senior Management and the global Steering Committee in a critical yet constructive manner on the status of the GWP Network.
- **GWP's Annual Report – GWP in Action**: This report is targeted at a wide audience and describes GWP activities and outcomes across the Network.
- **GWP's Monthly e-newsletter NewsFlow**: With over 2,700 subscribers, *NewsFlow* is an instrument for inter-regional sharing that strengthens the GWP Network in building knowledge and capacity. It is also a reporting mechanism so that donors and other audiences understand what we are doing and why. The articles highlighted in *NewsFlow* come from the material submitted in the Monthly Reports.
- **GWP's Annual Financial Report**: The report presents the consolidated audited financial report for the Network. This official financial report, approved by the Sponsoring Partners, is presented to all donors as part of GWP's reporting obligations.

Annual Sequence

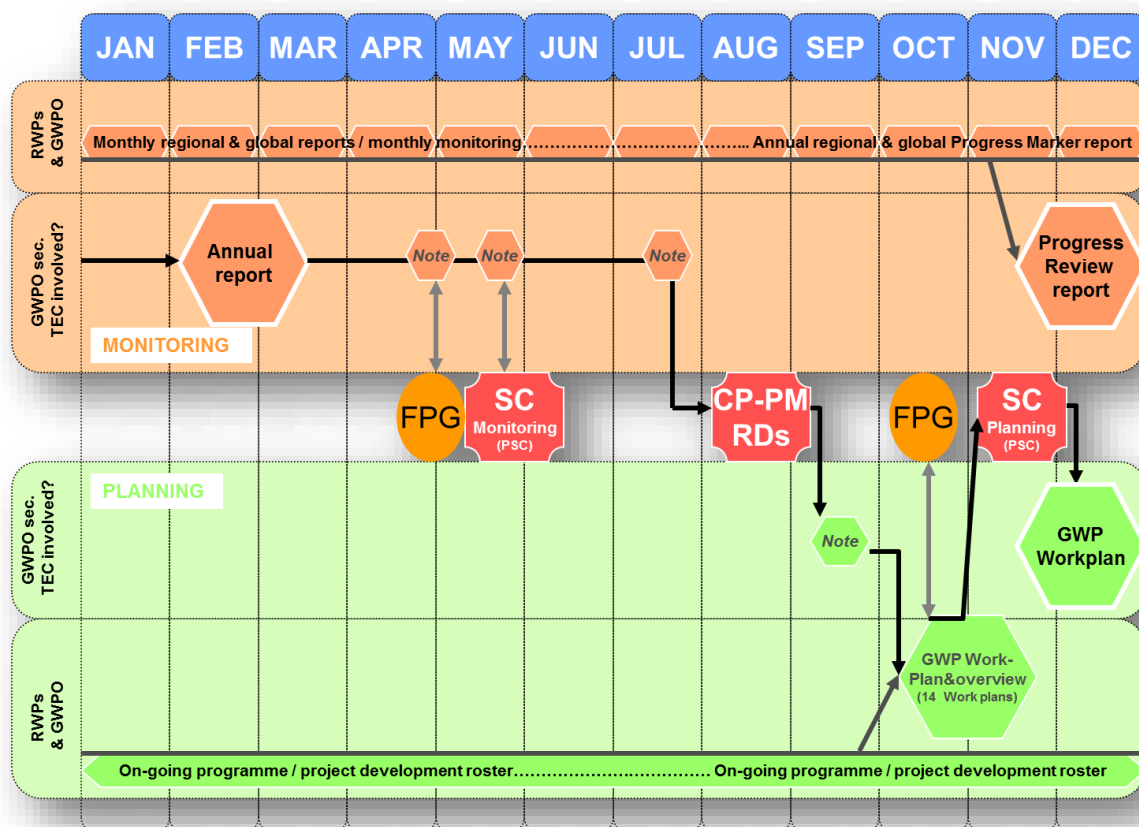
The diagram below shows the sequencing of GWP's Work Programme Management cycle. There are three key checkpoints at the GWP system level:

- Steering Committee (SC)⁵ meeting - May: Evaluation and reflection on past activities including approval of the Annual Report – GWP in Action – for the previous year and submission of the Annual Financial Report.

⁴ As produced by all GWP entities (GWPO, including the Technical Committee & RWPs). In addition, detailed activity reports are provided by RWPs & CWPs to their respective governing bodies and detailed project reports to the sponsors when relevant.

⁵ SC meetings are each preceded by meetings of the Financial Partners Group (FPG)

- Annual Partners Meeting (PM) in August: The Consulting Partners (CP) meeting - reflecting on lessons learned and discussions on new developments.
- Sponsoring Partners (SP) Meeting in August: Approval of the Annual Financial Report.
- Steering Committee (SC) meeting - November: Annual workplans and budgets for the coming year presented for approval in light of conclusions reached at the annual Partners Meeting.



The information used at the different steps of the sequence is provided by the GWP entities in specific templates presented below. The sequence of requests for information is summarised in the following table and in Section 2 of this report:

Information to be provided by all GWP entities:	Request sent on:	Deadline for submission:
<u>Request A:</u> Input to Annual Progress Review report see section 2.1	1 October	1 November
<u>Request B:</u> Annual Workplan see section 2.2	1 October	1 November
<u>Request C:</u> Inputs for Annual Report - "GWP in Action" see section 2.3	15 December	15 January
<u>Request D:</u> Monthly Communication and Monitoring Reports see section 2.4	Monthly	Beginning of each month
<u>Request E:</u> Quarterly Financial Reports see section 2.5	Quarterly	20 th day each of April, July, October and January

2. Information provided by GWP entities

Request A: Input to Annual Progress Review

A

Responsible	Regional coordinator in liaison with regional SC. You will work with the assistance of the GWPO Network Officer responsible for your Region.
Deadline	1 November
Purpose of M&E information	<p>The information requested is split in 5 sections:</p> <ul style="list-style-type: none"> • M&E 1: Annual Progress Markers Status • M&E 2: Annual GWP Logframe Indicators Status • M&E 3: Summary assessment of implementation of planned activities • M&E 4: Overall Critical assessment • M&E 5: Management & Governance Performance Self-Assessment <p>It is meant to be used for :</p> <ul style="list-style-type: none"> • Your own analysis of progress and learning, to be used as background/inputs for preparing your Workplan • The production by GWPO of (i) the annual progress review and, (ii) the annual report. Both documents prepared for submission to the GWP Steering Committee and Financial support Group.

2.1.1 Overall assessment of Progress Markers Status

Section M&E 1	Annual Progress Markers status report.
Template used	Excel spreadsheet provided separately.

TEMPLATE M&E 1 (illustrative view only):

NOTE: OC & PM nb to be harmonized								PROGRESS MARKERS TO BE ADDRESSED BY GWP SYSTEM								MONITORING - OUTCOME JOURNAL					MONITORING
																/	/	/	/	/	
																+	+	+	+	+	
																++	++	++	++	++	
AGENDA	OC	PM	k 09	k 10	k 11	k 12	k 13	Progress Markers								Nov-10	Dec-11	Nov-12	Dec-13	TODAY	
CAF	1.1	1.1.5	X					Some development plans are reviewed to reflect an IWRM approach												0	
CAF	1.1	1.1.6					X	Administrations in charge of water in Gabon and Chad coordinate other stakeholders have put in place country teams								/	/			/	
CAF	1.2	1.2.1		X	X	X		The Government of Cameroon has adopted the situation analysis document and the IWRM action plan								/	/			/	
CAF	1.2	1.2.2		X	X			Governments of Congo, Central African Republic and Sao Tome and Principe have adopted their situation analysis documents												0	
CAF	1.2	1.2.3		X				CICOS has a Strategic Action Plan (SAP)								++	++			++	
CAF	1.2	1.2.4		X	X			ECCAS Heads of States and Governments have adopted the new regional water policy document and its institutional framework								+	+			+	

Explanation of the headings in the worksheets (Each line of the worksheet refers to a particular progress marker):

AGENDA	code of the region or global level
OC	reference number of the Outcome Challenge to which the Progress Marker is contributing; usually comes from the Work Programme
PM	reference number of the Progress Marker considered (the GWP database uses a continuous numbering system over the Strategy period)
wkp	A cross (X) indicates in which annual workplan the progress marker is mentioned
Progress Markers	Recorded description of the Progress Marker
"Date"	Appreciation of progress at the given "Date" on a three levels scale (see below)
Comments "Date"	Comments on the appreciation of the given "Date"

Three levels scale:

/	Something can be reported about the boundary actor, mostly in terms of connection / interest / participation to GWP activities (10%)
+	A change process is identified while not fully implemented; the discussion of the link to GWP activities is worth reporting (50%)
++	A significant change can be reported; the discussion of the different influences/ processes leading to this change is worth reporting, including the link to GWP activities (90%)

Elements on the TEMPLATE M&E 1:

General

1. The whole set of templates for all GWP regions and global level (14 worksheets) is included in the Excel spreadsheet. You obviously need to work with the worksheet of your region only.
2. The structure of the template does not change from one year to the other; two sets of information are simply added every year: (i) The new Progress Markers mentioned in this year's workplan are added to the existing list; (ii) The assessment and comments made last year on the existing list are recorded, ensuring thus continuity of monitoring of the core set of Progress Markers across the years ;
3. You will note that the list of progress markers of a given region can be sorted in different ways: by OC number, by work-planning year etc. You may use what suits you best for filling the data and analysing (simply keep the integrity of the data while sorting)

Instructions

1. Try and assess all Progress Markers.
2. Put the letter "N" (Non relevant) as assessment in two specific cases: (i) if the PM is a duplicate (consolidated in another PM) or (ii) if nothing has ever been reported on this PM and you consider it should be terminated
3. If the PM is still relevant but nothing has changed since the last assessment (nothing to be reported): leave a blank as assessment
4. If a major change has happened which can be related to GWP activities and was not formulated as a PM at planning stage: add a new PM without numbering
5. There may be some inaccuracies in the recording (formulation of progress markers, link to Outcome Challenge); sorry in advance for that...; thanks for clarifying with your NO and correcting them!
6. **PLEASE DO NOT CHANGE THE FORMATS; AND DO NOT MERGE CELLS**

2.1.2 Overall assessment of GWP Logframe indicators

Section M&E 2	Annual GWP Logframe Indicators status report.
Template used	Excel spreadsheet provided separately.

TEMPLATE M&E 2 (illustrative view only):

	A	B	C	D	E	F	G	H	I	J	K	L	M
1	Agenda	NB	IND	2013	2013	2014	2014	2015	2015	2016	2016	2013	2013
2				Targets	Achieve.	Targets	Achieve.	Targets	Achieve.	Targets	Achieve.	Comments	Comments
3	CAC	I1	Number of people benefiting from improved water resources planning and management										
4	CAC	I2	Total value of investment influenced which contributes to water security and climate resilience through improved WRM & water services										
5	CAC	O1	Number of policies, plans and strategies which integrate water security for climate resilience										
6	CAC	O2	Number of approved investment plans associated with policies, plans and strategies which integrate water security for climate resilience										
7	CAC	O3	Number of agreements/commitments on enhanced water security at transboundary/regional level influenced.										
8	CAC	O4	Number of investment strategies supporting policies and plans which integrate water security for climate resilience										
9	CAC	O5	Number of enhanced legal frameworks / policies / strategies integrating water security and climate change facilitated by										
10	CAC	O6	Gender: Percentage of women and girls benefiting from interventions to improve water security (min %).										
11	CAC	OT1.1	Recognition of GWP contribution to the global debate measured by number of acknowledgments in official documents										
12	CAC	OT1.2	Number of regional organisations supported in developing agreements/commitments /investment options and tools that integrate water security and climate resilience										
13	CAC	OT1.3	Number of national organisations supported in developing legal frameworks / policies / strategies, sectoral and development plans- Integrating water security and climate										
14	CAC	OT1.4	Number of organisations (all levels) supported in the development of investment strategies supporting policies and plans which integrate water security for climate										

Explanation of the headings in the worksheets (Each line of the worksheet refers to a particular Logframe indicator):

AGENDA	code of the region or global level
NB	reference number of the Indicator
IND	Name of the Indicator
Targets sets	Numerical Targets set for the indicator in the Workplan of the year
Achievements	Observed numerical achievements at the end of the year
Comments targets	Brief reference to activities planned in the Workplan justifying the targets set
Comments achievements	Brief explanations on achievements observed at the end of the year

Elements on the TEMPLATE M&E 2:

General

1. The whole set of templates for all GWP regions and global level (14 worksheets) is included in the Excel spreadsheet. You obviously need to work with the worksheet of your region only.
2. The structure of the template does not change from one year to the other; one set of information is simply added every year: (i) The assessment and comments made the previous year are recorded, ensuring thus continuity of monitoring across the years ;

Instructions

1. **PLEASE DO NOT CHANGE THE FORMATS; AND DO NOT MERGE CELLS**

2.1.3 Summary assessment of implementation of planned activities

Section M&E 3	Summary assessment of implementation of planned activities
Template used	Summary table illustrated below

TEMPLATE M&E 3:

Planned activities (highlights only ⁶)	Achievements to date
<ul style="list-style-type: none"> Highlight 1 (as provided in your workplan last year) Highlight 2 (as provided in your workplan last year) Highlight 3 (as provided in your workplan last year) (Possibly 1 more) 	<ul style="list-style-type: none"> achievements 1 (write 0.5 page max) achievements 2 (write 0.5 page max) achievements 3 (write 0.5 page max) achievements

2.1.4 Overall Critical Assessment

Section M&E 4	Overall Critical assessment ⁷ .
Template used	Summary table illustrated below (1page max for the three bullets together)

TEMPLATE M&E 4:

Overall critical assessment
<ul style="list-style-type: none"> Critical assessment of achievements as compared to plans for the year. Overall assessment of Strategy / Work Programme implementation so far Lessons learned and implications for the coming year.

2.1.5 Self-assessment on progress around critical GWP functions

Section M&E 5	Management & Governance Performance Self-assessment It is proposed that the self-assessment process occur as part of the annual regional governance meetings, perhaps extending the duration of Steering Committee meetings or back-to-back to key regional events. It is understood that the Self-Assessment may or may not be available at the time of annual reporting.
Template used	Summary table illustrated below & companion note provided separately

TEMPLATE M&E 5:

GWP Region:.....
Questionnaire prepared by: **Date:**
Reviewed by: **Date:**

⁶ This column is pre-filled with the information provided in last year's Workplan (see WPB 1)

⁷ Builds on progress markers and activity implementation reporting above

GWP Critical Functions	How would you classify your performance? Or How each statement corresponds to reality in your RWP?			Comments ⁸
	Fair	Good	Excel.	
1. Strategic Planning and programme implementation (including thematic issues)				
We submit to GWP Secretariat good quality annual work plans within deadlines.				
We have mechanisms to involve GWP Partners in the region in the development of our annual work plan and budget.				
We have an up to date record of work plans and budgets to ensure some level of continuity.				
We monitor outcomes and the effectiveness of activities, and use the findings to feed into our annual planning processes.				
Our annual planning builds on progress made through activities undertaken in previous years and actively follow up on opportunities generated by those activities.				
Our region is actively supporting improved water governance processes (e.g. institutional reforms, legislative framework, etc) throughout the region.				
The critical development challenges to water security identified in our region (e.g. climate change, growing urbanisation, food production, resource related conflict, etc) are duly considered in our annual work planning.				
2. Communication and Reporting				
Our RWP has a Communication Strategy/Plan.				
We regularly and timely submit monthly reports to GWP Secretariat.				
We submit good quality annual outcomes report within deadline.				
We keep a record of regional and national processes, activities that may lead to outcomes.				
We often update our website and monitor its use.				
The press is invited to cover GWP events and publications.				
We monitor media coverage on GWP in our region.				
We give training to journalists and regularly share with them information on water related news and issues.				
3. Financial Management and Host Institution (HI) performance				
Our submission of accurate and timely financial reports is:				
We secure timely audits.				
We secure sufficient level of liquidity throughout the year.				
We monitor our budget and liaise with the Network officer and HI whenever an amendment is required.				
Our cooperation with the HI could be described as:				
The service provided by our HI could be described as:				
Our interaction with the GWPO Finance Team is:				
Our (RWP Secretariat and HI's) support to the CWP to perform good financial reporting is:				
The RWP SC oversees the HI performance.				
4. Network Governance				

⁸ If "fair": what is the reason why your performance is not considered "good"? What are you planning to do in order to improve performance? And/or what could be done to help you improve it?

If "good": please, define what you think is the determining factor(s) for your good performance.

If "excellent": what would you like to recommend to other RWPs and GWP Secretariat to do in order to improve their performance in this aspect?

GWP Critical Functions	How would you classify your performance? Or How each statement corresponds to reality in your RWP?			Comments ⁸
	Fair	Good	Excel.	
We hold an annual general assembly (or each other year if defined by statutes).				
We keep a record of the RWP and all the CWPs' annual assemblies and the composition of their Steering Committee.				
We provide support on governance issues to the e CWP to ensure compliance to the Conditions for Accreditation.				
We hold regular Regional Committee/Council meetings in accordance with our statutes.				
We actively ensure a transparent election of SC members broadening up participation in the RWP and CWP governing bodies, and preventing capture of the Partnership by individuals holding vested interests.				
We keep a record of the agreements reached in the RC meetings and use it to follow up on progress in the following meetings.				
Reliability on the information in our partners database is:				
We promote the recruitment of new Partners as stated in the Policy on Partners.				
We contribute to ownership building by keeping GWP Partners in our region well informed of main developments throughout the Network.				
We maintain regular communication within the region, with the CWP and with GWP Secretariat.				
Our SC members are actively engaged in supporting the RWP planning, implementation and reporting processes.				
We fully comply with the Conditions for Accreditation.				
5. Knowledge sharing				
We contribute to the promotion of the ToolBox				
We contribute to the enhancement of the Toolbox by submitting case studies and sharing relevant good quality documents that could be used throughout the Network.				
Our RWP actively shares with GWP Partners in the region key documentation that could improve their WRM interventions.				
Our RWP and CWP support the development of technical publications.				
We monitor knowledge generation of GWP Partners in our region.				
6. Fund raising				
We have been very active engaging donors (mention estimate annual amount in "remarks")				
We have developed and submitted proposals for funding.				
Our success in raising funds could be considered:				
Our success in engaging Partners to support our RWP and CWPs (in kind contributions) has been:				

Request B: Annual Workplan**B**

Responsible	Regional coordinator in liaison with regional SC. You will work with the assistance of the GWPO Network Officer responsible for your Region.
Deadline	1 November
Purpose of Workplan & Budget information	<p>The information requested is split into 3 sections:</p> <ul style="list-style-type: none"> • WPB 1: Context and Workplan Summary • WPB 2: Detailed Workplan • WPB 3: Annual target setting for GWP Logframe indicators • WPB 3: Detailed Budget <p>It is meant to be used for :</p> <ul style="list-style-type: none"> • The production of your own Workplan • The production by GWPO of the Annual Workplan and Budget document prepared for submission to the GWP Steering Committee and Financial Partners Group.

2.1.6 Introduction and Workplan summary

Section WPB 1	Introduction and Workplan summary.
Template used	Summary table illustrated below

TEMPLATE WPB 1:**Introduction: Water Management Context and Challenges**

Text (write 1 page max)

Workplan summary (List main highlights only)

- Highlight 1 (write short description: 1 to 3 sentences max)
- Highlight 2 (write short description: 1 to 3 sentences max)
- Highlight 3 (write short description: 1 to 3 sentences max)
- Highlight (possibly 1 more)

2.1.7 Detailed Workplan

Section WPB 2	Detailed Workplan
Template used	Summary tables illustrated below

TEMPLATE WPB 2:

Strategic Goal #1: Catalyse Change in Policy and Practice. *This goal focuses on improving water resources management to help countries towards growth and water security emphasizing an integrated approach, good governance, appropriate infrastructure and sustainable financing.*

From Outcome Challenges to Activities		
Outcome Challenge	Progress markers – Describe the change in the boundary actors that you hope to see over the next twelve months if GWP is very successful. What will the boundary actors be doing differently?	Action to be taken by GWP – Specify what will be done, by whom, when and where. <i>[High level Output expected from activities: Facilitation packages for countries, regions and global level implemented and innovative, sustainable IWRM solutions demonstrated]</i>
OC #1	(-)	(-)
OC #2	(-)	(-)
OC #3	(-)	(-)
OC #4	(-)	(-)
OC #5	(-)	(-)
OTHER?	(-)	(-)

Strategic Goal #2: Generate and Communicate Knowledge. *This goal focuses on developing the capacity to share knowledge and to promote a dynamic communications culture, so as to support better water management.*

From Outcome Challenges to Activities		
Outcome Challenge	Progress markers – Describe the change in the boundary actors that you hope to see over the next twelve months if GWP is very successful. What will the boundary actors be doing differently?	Action to be taken by GWP – Specify what will be done, by whom, when and where. <i>[High level Output expected from activities: Knowledge and capacity developed and disseminated]</i>
OC #1	(-)	(-)
OC #2	(-)	(-)
OC #3	(-)	(-)
OC #4	(-)	(-)
OC #5	(-)	(-)
OTHER?	(-)	(-)

Strategic Goal #3: Strengthen Partnerships. *This goal focuses on enhancing the network's resilience and effectiveness through stronger partnerships, good governance, measuring performance to help learning and financial sustainability.*

From Outcome Challenges to Activities

Outcome Challenge	Progress markers – Describe the change in the boundary actors that you hope to see over the next twelve months if GWP is very successful. What will the boundary actors be doing differently?	Action to be taken by GWP – Specify what will be done, by whom, when and where. <i>[High level Output expected from activities: An effective Global Action Network of partners sustained]</i>
OC #1	(-)	(-)
OC #2	(-)	(-)
OC #3	(-)	(-)
OC #4	(-)	(-)
OC #5	(-)	(-)
OTHER?	(-)	(-)

Elements on the TEMPLATE WPB 2:

- Ensure a clear logical flow from (i) Activities, contributing to achieve (ii) Progress Markers, which are goal posts along the way to achieving (iii) Outcome Challenges.
- To the extent possible, use the Outcome Challenges that were defined in your regional Work Programme and were already used in your workplans since the beginning of the Strategy period.
- If relevant, use the Progress Markers that were defined in your regional Work Programme; note that you have the option (if justified) to revise them and/or develop new ones for next year. Avoid having too many progress markers if possible.
- To the extent possible, ensure that the numbering for activities is consistent across the planning & budget documents

How to deal with projects?

As said in introduction, the workplan of a GWP entity reflects an annual “portfolio overview” of its activities. These activities are developed through various processes and often packaged in the form of projects. The detailed description of projects is provided in the respective project documents. The full list of project activities / tasks should not be repeated in the GWP entity workplan document. A project can simply be referred to as 1 action line or 3 action lines (3 components under the 3 goals) in the GWP entity workplan document. In some cases, referring to the breakdown of the 3 components in Work Packages may also be an option.

2.1.8 Annual targets for GWP Logframe indicators

Section WPB 3	Annual target setting for GWP Logframe indicators
Template used	Excel spreadsheet provided separately.

TEMPLATE WPB 3 (illustrative view only):

	A	B	C	D	E	F	G	H	I	J	K	L	M
2	Agenda	NB	IND	2013 Targets	2013 Achieve.	2014 Targets	2014 Achieve.	2015 Targets	2015 Achieve.	2016 Targets	2016 Achieve.	2013 Comments Targets	2013 Comments Achieve.
3	CAC	I1	Number of people benefiting from improved water resources planning and management										
4	CAC	I2	Total value of investment influenced which contributes to water security and climate resilience through improved WRM & water services										
5	CAC	O1	Number of policies, plans and strategies which integrate water security for climate resilience										
6	CAC	O2	Number of approved investment plans associated with policies, plans and strategies which integrate water security for climate resilience										
7	CAC	O3	Number of agreements/commitments on enhanced water security at transboundary/regional level influenced.										
8	CAC	O4	Number. of investment strategies supporting policies and plans which integrate water security for climate resilience										
9	CAC	O5	Number of enhanced legal frameworks / policies / strategies integrating water security and climate change facilitated by GWP										
10	CAC	O6	Gender: Percentage of women and girls benefiting from interventions to improve water security (min %).										
11	CAC	O7	Youth: Number of youth organizations involved in water resources decision making bodies.										
12	CAC	OT1.1	Recognition of GWP contribution to the global debate measured by number of acknowledgments in official documents										
13	CAC	OT1.2	Number of regional organisations supported in developing agreements/commitments /investment options and tools that integrate water security and climate resilience										
14	CAC	OT1.3	Number of national organisations supported in developing legal frameworks / policies / strategies, sectoral and development plans- integrating water security and climate										
15	CAC	OT1.4	Number of organisations (all levels) supported in the development of investment strategies supporting policies and plans which integrate water security for climate										

Explanation of the headings in the worksheets (Each line of the worksheet refers to a particular Logframe indicator):

AGENDA	code of the region or global level
NB	reference number of the Indicator
IND	Name of the Indicator
Targets sets	Numerical Targets set for the indicator in the Workplan of the year
Achievements	Observed numerical achievements at the end of the year
Comments targets	Brief reference to activities planned in the Workplan justifying the targets set
Comments achievements	Brief explanations on achievements observed at the end of the year

Elements on the TEMPLATE M&E 2:

General

1. The whole set of templates for all GWP regions and global level (14 worksheets) is included in the Excel spreadsheet. You obviously need to work with the worksheet of your region only.
2. The structure of the template does not change from one year to the other; one set of information is simply added every year: (i) The assessment and comments made the previous year are recorded, ensuring thus continuity of monitoring across the years ;

Instructions

1. **PLEASE DO NOT CHANGE THE FORMATS; AND DO NOT MERGE CELLS**

2.1.9 Detailed Budget

Section WPB 4	Detailed Budget
Template used	Excel spreadsheet provided separately and companion document "Financial Guidelines"

TEMPLATE WPB 4 (illustrative view only):

4. FUNDS NOT INCLUDED IN THE BUDGET (see bottom of budget for more details)			
Locally raised funds not secured 2012	250		
Expected in kind contributions 2012	12		
		EURO	
	Total Funds 1+2+3	1. GWP Core Budget	3. Locally Raised Funds Secured
TOTAL SECURED FUNDING GOAL 1 - 4	275	200	75
Strategic Goal 1: To apply and implement IWRM principles and practices to support national development priorities	Total Funds 1+2+3	1. GWP Core Budget	3. Locally Raised Funds Secured
<i>Outcome Challenge: Enabling policy environment for National IWRM plans</i>			
Activity 1 Support National IWRM policy dialogues	24	24	0
Activity 2 Awareness raising campaign	16	16	0
<i>Outcome Challenge: Capacity development for National IWRM plans</i>			
Activity 1 National trainings on IWRM	32	32	0
<i>Outcome Challenge: Fundraising for National IWRM plans</i>			
Activity 1 Fundraising	8	8	0
SUM STRATEGIC GOAL 1	80	80	0

Elements on the TEMPLATE WPB 3: **[To be updated-see financial guidelines]**

To the extent possible, ensure that the numbering for activities is consistent across the planning and budget documents.

- 1. GWP Core Budget;** Core budget to be approved by GWPO Steering Committee. Estimated to be Euro xxx.
- 2. Approved additional GWP Funds;** Additional funds requested from and approved by GWPO for a specific purpose during the year (e.g. ToolBox).
- 3. Locally raised funds secured (regional & country level):** Funds raised locally by the Region will be part of the Budget only when the funds are secured by a signed agreement. The Region will need to request additional information from the CWP's in the region to ensure that locally raised funding secured at the country level are included in the locally raised funds for the region as a whole.

FUNDS NOT INCLUDED IN THE BUDGET:

Locally raised funds not yet secured as well as forecasted in kind contributions are noted for information. Donor and amount could preferably be noted in the space provided in the last part of the sheet.

RUNNING COSTS SECRETARIAT (REGION AND COUNTRY) Please use the budget lines under Goal 3

Meetings are activities and should be included under Goal 3 (not in running costs) in respect to: Regional Steering Committee/Council Meetings; Annual Consulting Partners Meeting; Regional Partners Meeting
Include bank interest received under financial costs. Bank interest received will be considered negative expenditure in order to offset bank charges, much in the same way that we offset foreign currency losses with foreign currency gains.

ACTUAL BY QUARTER:

The budget template is to be used for the quarterly expenditure reports. The Q report columns are currently hidden in the Budget template

Request C: Inputs to GWP Annual Report - *GWP in Action*

C

Responsible	Regional coordinator. You will work with the assistance of the GWPO Network Officer responsible for your Region.
Deadline	15 January
Purpose of M&E information	The information requested is meant to be used for : <ul style="list-style-type: none"> • The production by GWPO of the GWP Annual Report

2.1.10 Documentation of significant Outcomes

Section M&E 6	Selection of most significant outcomes of the previous year for the Annual report. The narrative should include a presentation of detailed background and context information. Relevant images and additional information may be added.
Template used	Summary template & guidelines illustrated below (2011)

GWP [Region] [YEAR]
Submission to GWP in Action [YEAR] Annual Report

You do not have to use this template but please follow its guidelines.

Prepared by:

Date:

(Please complete by 15/01/[YEAR])

Note: Please provide 4-5 outcomes that occurred in [YEAR]. The activities that contributed may have occurred prior to [YEAR], but the actual outcomes must be in [YEAR]. An outcome is a change in the behaviour, relationship, and/or actions of boundary actors that can be reasonably linked to the activities and outputs of GWP.

If you report on a meeting or forum or dialogue, the reader needs to know *what difference it made*, not just what the recommendations were. If you say something was 'facilitated', we need to know what specific activities constituted 'facilitation' and which outcomes can be plausibly linked to this facilitation (which should be possible if you answer the questions below).

Recognizing that donors are increasingly seeking 'value for money', please give numbers, if possible, e.g.: (1) how many people can we credibly claim have benefitted (or will benefit) from this outcome? (2) has this outcome leveraged funds for the water sector? (3) is there some other value-added, e.g., a decrease in disease? Increased access to water? Water savings that can be measured?, etc.

Outcome

(Who or what changed? What is the significance of the change? "So what?")

What strategic goal in your region does this outcome relate to?

*Description of the change process
(Why did the change happen?)*

*Contributing factors, actors, and background
(Who or what contributed to the change? What was GWP's role?)*

*Lessons learned
(can be positive and negative, based on the barriers and challenges faced)*

Other information—web links to reports, news items, images, etc.:

People we can interview (email and telephone numbers)—It is one thing for us to say what we've achieved but far more impact when one of our stakeholders says it:

Request D: Monthly Communication & Monitoring Reports

D

Responsible	Regional coordinator & regional Communication Officer
Deadline	1st Monday of each Month
Purpose of information	<p>The information requested is meant to be used for :</p> <ul style="list-style-type: none"> • Communication: <ul style="list-style-type: none"> ○ The region's reporting and communications materials ○ The production of NewsFlow, GWPO's electronic newsletter • Monitoring: <ul style="list-style-type: none"> ○ The region's regular monitoring of progress and learning, in particular: background/inputs for preparing annual monitoring reports ○ The maintenance by GWPO of (i) the monthly reports database which records all the information items submitted (not only those published in NewsFlow) (ii) the governance outcome database, which records the key outcomes submitted.

2.1.11 Recording of the Work Programme Information: Narrative

Section M&E 7	Account of monthly activities, news, events & outcomes
Template used	Summary guidelines below

We ask for the following **information items** (Please **number** the items in your report and start the narrative by a brief **headline** capturing the essence of the information).

- 1 ACTIVITIES or OUTPUTS.** A selection of GWP actions or products (usually from your workplan) that are expected to contribute to producing Outcomes at a later stage, for example:
 - products (publications, conference papers)
 - capacity building, awareness raising (training workshop, seminars, campaigns...)
 - facilitation of processes (dialogues, consultation with stakeholders)
- 2 OUTCOMES.** Ultimately, GWP exists to bring about change in the management of water resources. These changes, called Outcomes, are significant changes in the water sector that can be plausibly linked to GWP activities and outputs. The Monthly Narrative Report gives you the opportunity to reflect if any Outcomes occurred since your last report. You should not expect to observe such changes every month, but when you do, please report them even if the plausibly linked activities took place months ago. If anticipated, these Outcomes may already be described in current or past workplans (in the form of Progress Markers or Outcome Challenges). Of particular interest are Key Water Governance Outcomes relating to significant changes in water governance systems. These changes can be related to a governance area listed in the GWP ToolBox and it is important for GWP monitoring to record them as such (see below).
- 3 NEWS** that increased the visibility or enhanced the reputation of GWP.
- 4 COMING EVENTS** that the GWP Network should be aware of.
- 5 PHOTOS** are most welcome.

2.1.12 “Analysis Table” of the Work Programme Information

Use the numbering of your information items (from the narrative) and fill in as much as possible the table below **UPDATE: LINK TO PROJECT**

PART A) FOR ALL INFORMATION ITEMS (Except News and Coming Events)								PART B) FOR INFORMATION ITEMS RELATING TO WATER GOVERNANCE OUTCOMES ONLY			
←-----→								←-----→			
Information item NB & Title	Location	Key Partner Organizations involved	Estimate of the nb of people concerned	Public References /Media	Estimate of related GWP costs	Thematic area	Type of Activity / Output	Connection to ToolBox Area A1.01 to C9.05	Estimate of investment leveraged	Estimated nb of beneficiaries (people impacted)	Estimate of the value added
1. Headline											
2.Headline											
3.Headline											
4.Headline											
5.Headline											
6.Headline											
7.Headline											
8.Headline											
9.Headline											
10.Headline											
...											

Succinct guidelines for filling the “analysis table”:

PART A)

Elements for Monitoring GWP Outputs:

For all information items reported (except news and coming events), the following data should be provided:

PART B)

Elements for Monitoring GWP Outcomes:

Some information items go beyond the description of activities / outputs and refer to Key Water Governance Outcomes (not expected every month); for these information items only, the following additional data should be provided:

Information item NB	Location	Key Partner Organizations involved	Estimate of the nb of people concerned	Public References / Media	Estimate of related GWP costs	Thematic area	Type of Activity / Output	Connection to ToolBox Area A1.01 to C9.05	Estimate of investment leveraged	Estimated nb of beneficiaries (people impacted)	Estimate of the value added
Definition	Country, Basin, region, City. Mention if GWP “demonstration project”	Beneficiary institutions or implementing partners or allies	Estimated nb of people targeted by / involved in the activity (i.e. nb of people involved in a training course)	List of available supporting references. In particular media features & publications	<i>Optional</i> ; expected in case of discrete activity e.g. Workshop, Training etc	-Climate -food -urbanization -environment -energy -other	-Facilitation of process -Capacity building -Awareness raising -Knowledge product -Meetings	Governance area impacted (see assessment grid in annex), i.e., B1.02: reform of Transboundary organization	e.g., budgetary allocation; related investments committed (when possible- see assessment grid in annex)	e.g., nb of people living in a basin where new basin entity is established. Gender disaggregated	Est. of socio-economic or environmental value added by the outcome (when possible- see assessment grid in annex)
Example Research leads to increase in W&S budget	El Salvador	<i>Implementers:</i> Three El Salvadoran water networks: GWP El Salvador, the Network of Water and Sanitation of El Salvador (RASES) and Foro del Agua. <i>Influenced:</i> ANDA, MARN	Findings presented at forum attended by 175 people from national institutions and meetings with National Authority for Water and Sewerage	Two press conferences and radio interviews	< 3000 Euro	Water supply and sanitation	Knowledge management (Research study)	Infrastructure Investment plan. C2.05	Allocation of USD 30 million for investment in water management	?	?

Request E: Quarterly Financial and Narrative⁹ Reports

E

Responsible	Host Institutional liaison with the Regional Coordinator (financial) Project Manager in liaison with Regional Financial Officer (narrative)
Deadline	Quarterly
Purpose of information	The information requested is meant to be used for : <ul style="list-style-type: none"> Finance: <ul style="list-style-type: none"> financial monitoring audit Annual Financial Report Monitoring: <ul style="list-style-type: none"> project progress monitoring (assessment of achieved vs. planned activities) in relation to financial expenditure at the project level

2.1.13 Routine recording of financial information

Section M&E 8	Account of expenditures against budget
Template used	Excel sheet provided separately and companion document “Financial Guidelines”

[Template provided within the annual budget Excel spreadsheet WPB3]

2.1.14 Project progress monitoring

Section M&E 9	Narrative account of project level progress against planned activities
Template used	Excel sheet provided separately.

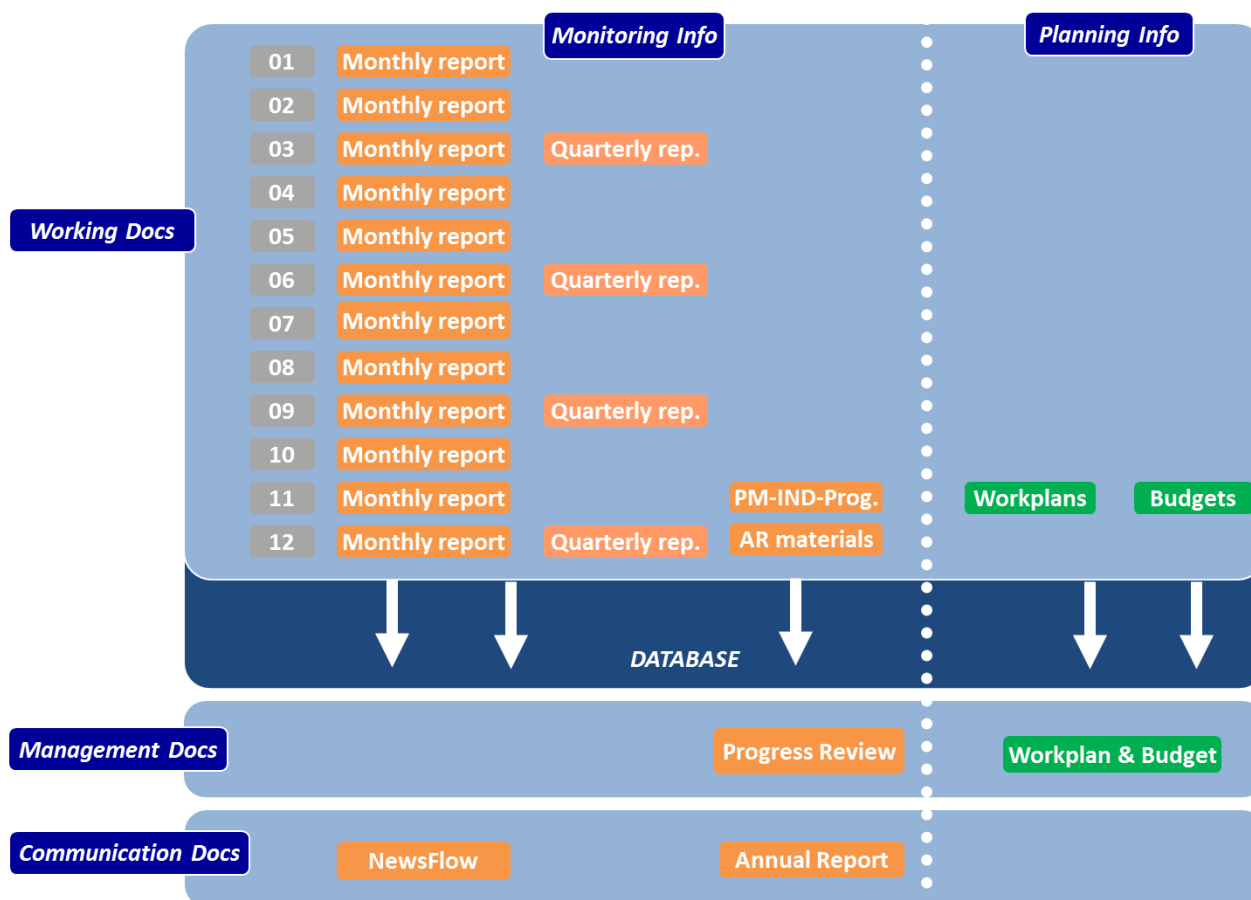
Template ## - [Yet to be formally adopted]

	A	B	C	D	E	F	G	H
1	Global Water Partnership							
2	Water & Climate Project							
3	Quarterly Progress Update							
4	GWP [Region]	BUDGET 2014	Forecast budget Q1	Expenditures Q1	(brief explanation of achievements as compared to plans in the context of expenditure by individual Outcome Challenge/Work Package)	Forecast budget Q2	Expenditures Q2	(brief explanation of achievements as compared to plans in the context of expenditure by individual Outcome Challenge/Work Package)
5	Goal 1 – Catalyse change in policy and practice							
6	Outcome Challenge/ Work Package 1			Select			Select	
7	Outcome Challenge/ Work Package 2			Select			Select	
8	Outcome Challenge/ Work Package 3			Select			Select	
9	Outcome Challenge/ Work Package 4			Select			Select	
10	Outcome Challenge/ Work Package 5			Select			Select	
11	Goal 2 – Generate and communicate knowledge							
12	Outcome Challenge/ Work Package 6			Select			Select	
13	Outcome Challenge/ Work Package 7			Select			Select	
14	Goal 3 – Strengthen partnerships							
15	Outcome Challenge/ Work Package 8			Select			Select	
16								
17					Critical assessment of overall achievements as compared to plans including lessons learned and implications for the remainder of the year			Critical assessment of overall achievements as compared to plans including lessons learned and implications for the remainder of the year

⁹ Narrative Quarterly reports are used at the project level only. They assess achieved versus planned activities; challenges and lessons learned.

3. Work Programme Management Documents

A list of the main GWP documents relating to planning and monitoring is summarized in the figure below.



Working documents contain the information collected from the various GWP entities.

The basic information provided in the workplans and through the various reporting mechanisms is managed through the *GWP Program Information System*. This information has been standardised, indexed and compiled in a *Program Management Database*. The database allows the production of **Summary Reports** presenting the information in a standardized format by regions or by themes (see illustrative table of contents below).

Two main **Management Documents** are produced: Progress Review and Workplan. The Annual Report and Newsflow are the two main **Communication** outlets. These Documents are important to maintain and develop GWP's reputation and visibility.

The table of contents of the management documents are provided hereafter.

Table of contents of GWP Workplan documents

Workplan Volume 1: Executive Summary

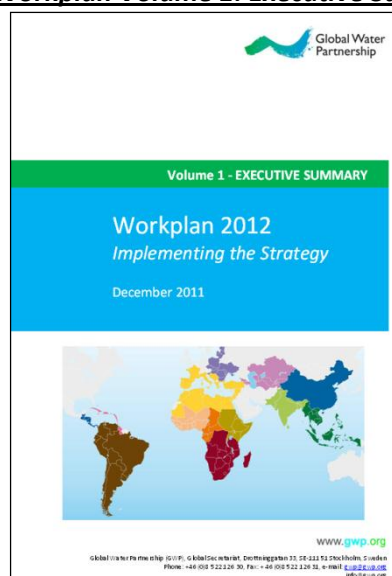


Table of Contents	1
1 Introduction	2
1.1 GWP Strategy – the context for the 2012 Workplan	2
1.2 The GWP Network	3
2 Approach to preparing the 2012 Workplan	7
2.1 Introduction	7
2.2 Funding Prospects for 2012	7
2.3 2012 Workplan Budget Scenarios	8
3 Progress in 2011	9
4 Summary Workplan for 2012 – “Continuity” Budget	9
4.1 Some highlights of planned regional activities in 2012	9
4.2 Summary of global thematic activities planned for 2012	16
4.3 Summary of GWPO and Technical Committee Workplan for 2012	18
5 “Growth” Budget Priorities	21
5.1 Regional Programmes	21
5.2 Global Activities and Programmes	29
6 GWP 2012 Budget	31
6.1 Workplan 2012 Budgets – Continuity, Balanced and Growth	31
6.2 Revenue Summary 2012 - “Continuity” and “Growth” Budgets	32
6.3 Breakdown of budget - by type of funding	33
6.4 Breakdown of planned budget according to the 4 GWP goals	35
Annex A – Summary of Progress in 2011	36
A.1 Summary of regional activities	36
A.2 Summary of global thematic activities	42
Annex B – Technical Committee Publications Timetable	44

Workplan Volume 2: GWPO

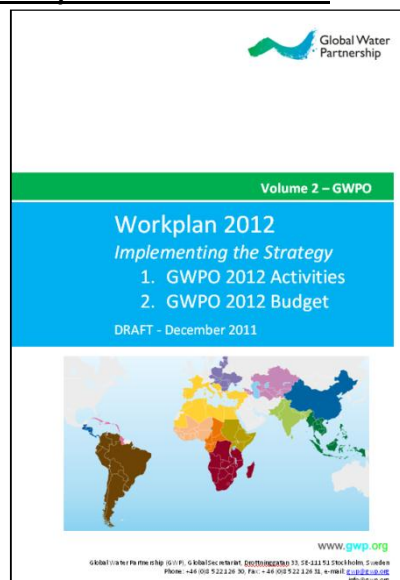


Table of Contents	1
1 GWPO Work Plan 2012	2
1.1 Introduction	2
1.2 GWPO Management and Coordination	3
1.3 GWPO Workplan Summary	5
1.3.1 100 Office of the Executive Secretary	5
1.3.2 200 Finance and Administration Unit	6
1.3.3 300 Communications Unit	6
1.3.4 400 Network Operations Unit	8
1.3.5 500 Technical Committee	9
2 GWPO budget	10
2.1 Budgeting GWPO activities	10
2.2 GWPO 2012 consolidated budget by Goals and Lead Units / TEC	11
2.3 GWPO 2012 consolidated budget by expenditures	12
2.4 GWPO 2012 budget by activities	13
ANNEX: Activity Sheets GWPO Secretariat	16

Workplan Volume 3: GWP Global

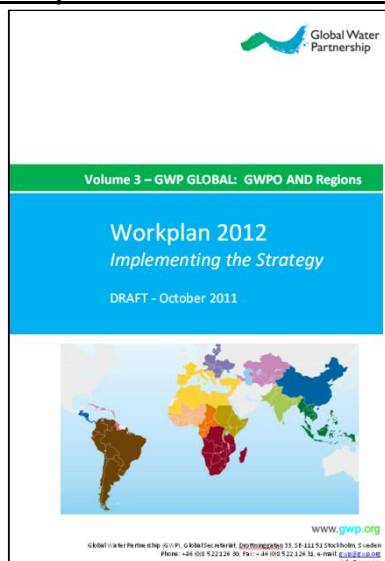


Table of Contents	1
GWPO	2
GWP Caucasus & Central Asia	10
GWP Central Africa	18
GWP Central America	26
GWP Caribbean	36
GWP Central & Eastern Europe	40
GWP China	52
GWP Eastern Africa	58
GWP Mediterranean	66
GWP Southern Africa	74
GWP South America	82
GWP South Asia	92
GWP Southeast Asia	102
GWP West Africa	108

Table of contents of GWP Annual Progress Review



CONTENT

1. Introduction
2. Executive Summary
 - 2.1 Progress in Implementing the Strategy
 - 2.2 Progress and challenges in 2011
3. Progress in Implementing the Strategy
 - 3.1 IWRM Outcomes
 - 3.2 Implementing the Strategy as assessed through Outcome Mapping Progress Markers
 - 3.3 Activities and Outputs
4. Monitoring and Evaluation Data and Planned/Actual Progress in 2011
 - 4.1 GWP Global Level
 - 4.1.1 The GWP Network and Organisation
 - 4.1.2 The GWPO and Technical Committee
 - 4.1.3 GWPO Secretariat – Planned/Progress in 2011
 - 4.1.4 Technical Committee – Planned/Progress in 2011
 - 4.2 Global Coordination of Thematic Areas – Planned/Progress in 2011
 - 4.2.1 Improving Financing for Water Management – Planned/Progress in 2011
 - 4.2.2 Facilitating Transboundary Cooperation – Planned/Progress in 2011
 - 4.2.3 Adapting to Climate Change – Planned/Progress in 2011
 - 4.2.4 Achieving Food Security – Planned/Progress in 2011
 - 4.2.5 Tackling Urbanisation – Planned/Progress in 2011
 - 4.3 Regions – Datasheets and Planned/Progress in 2011

4. Annex A Background on GWP Work Programme

GWP Work Programme is currently developed within the framework of the GWP Strategy¹⁰. It is implemented through a Global Secretariat, a Global Technical Committee and 13 Regional Water Partnerships (further decentralized into Country Water Partnerships)¹¹.

A summary presentation of the content of GWP Strategy, GWP Work Programme and GWP delivery mechanisms is provided below.

GWP Strategy

4.1.1 A results chain across 3 strategic goals – GWP's "theory of change"

The GWP Strategy has been developed on the basis of a *theory of change* with 3 well defined goals that were developed in consultation with stakeholders across the Network. The Strategy also highlights 6 main thematic impact areas. This is illustrated in the diagram below.



Figure: GWP Strategy – Towards 2020

The results derived from goals 1 and 2 are achievable in a sustainable and cost-effective manner only through Goal 3 – an effective network. This broad multi-stakeholder network enables knowledge to be generated and communicated globally, regionally and at country level (Goal 2) and facilitates the use of

¹⁰ See GWP Strategy

¹¹ See GWP Corporate Documents for further information on Organization & Governance

The links between the various elements contributing to delivering results envisioned in the Strategy are reflected in the logical framework presented below.

Figure 1: A conceptual framework showing the relationship between IWRM, GWP, and Water Security.

The framework is organized into three main horizontal levels, with a vertical flow of outcomes on the left and a horizontal flow of change theory and professional know how on the right.

Outcome level (Left):

- Impact:** The final outcome, represented by a green oval.
- Outcome (Purpose):** The purpose of the outcome, represented by a green oval.
- Changes On Boundary Actors:** Changes in boundary actors, represented by a green oval.
- Outputs:** The outputs of the activities, represented by a green oval.
- Activities:** The activities themselves, represented by a green oval.

Change theory (Right):

- IWRM approach rationale:** A large grey arrow pointing upwards, indicating the rationale for the IWRM approach.
- GWP Change theory:** A bracketed section on the right, encompassing the three parallel paths leading to IWRM.

Professional know how (Right):

- GWP professional know how:** A bracketed section on the right, encompassing the specific support and actions for each path.

Central Flow and Goals:

- Water security:** The central outcome, represented by a blue oval.
- IWRM:** The central outcome, represented by a red oval.
- Boundary Actors 3 engaged in dev. Governance & Investments:** A red oval, part of the IWRM path.
- Boundary Actors 2 Better equipped for IWRM:** An orange oval, part of the GWP Goal 2 path.
- Boundary Actors 1 Engaged in Water Partnerships:** A yellow oval, part of the GWP Goal 3 path.

Support and Actions (Bottom):

- Facilitation packages to Countries and regions implemented:** A blue box, part of the GWP Goal 1 path.
- Innovative, sustainable solutions demonstrated on the ground:** A blue box, part of the GWP Goal 1 path.
- Knowledge and capacity developed, disseminated and used:** A blue box, part of the GWP Goal 2 path.
- An effective Global Action Network of partners developed and sustained:** A blue box, part of the GWP Goal 3 path.
- Direct support to specific processes (Tools: planning processes, investments analyses, etc):** A blue box, part of the GWP Goal 1 path.
- General support on AR/CB/KM (Studies, workshops, trainings etc.. on Tools):** A blue box, part of the GWP Goal 2 path.
- General support to Water Partnerships (neutral platforms, meetings, trainings etc):** A blue box, part of the GWP Goal 3 path.

Goals (Bottom):

- GWP Goal 1:** A red oval, representing the first goal.
- GWP Goal 2:** A red oval, representing the second goal.
- GWP Goal 3:** A red oval, representing the third goal.

4.1.2 A global & decentralized ambition

GWP works globally as well as in 13 regions each having **their own agendas and priorities**.

GWP Work Programme

The Work Programme for achieving the 3 strategic goals is spelled out in:

- One **global Work Programme**, addressing the needs and priorities of the global agenda
- Thirteen **regional Work Programmes** addressing the needs and priorities of the regional agenda in each of the thirteen regions where the GWP network is active

The consolidation of these 14 Work Programmes forms the **GWP Work Programme**.

4.1.3 Targeting Change via Boundary Actors

All GWP activities are geared towards fostering changes via well identified **Boundary Actors**. The comprehensive list of changes GWP would like to see happening at global and regional level during the Strategy period is provided in the GWP Work Programme in the form of “Outcome Challenges”. These Outcome Challenges have been decomposed for the global and regional agendas in smaller goal posts to be reached along the way: the GWP Progress Markers. These Progress Markers are monitored every year and updated at the annual planning stage.

There is a great diversity of **Boundary Actors**: Governments, RBOs, Research organizations, NGOs, Funding agencies etc. Similarly, the **change areas** targeted cover the wide array of the water governance spectrum.

4.1.4 Typical Activities

GWP activities can be structured along two dimensions: thematic areas addressed and types of intervention.

Thematic focus areas listed in GWP Strategy:

T 1	Food and Water Security
T 2	Energy and Water Security
T 3	Ecosystems and Water Security
T 4	Urbanisation and Water Security
T 5	Transboundary Waters
T 6	Climate Resilience

“Types” of activities referring to GWP know-how:

1: Support to Regional and Transboundary cooperation
2: Support to National development and Sector Plans
3: Support to Investments development
4: Project Preparation and Financing
5: Demonstration Projects
6: Capacity Development
7: Knowledge and awareness
8: Governance and Fundraising

GWP Delivery Mechanisms

4.1.5 GWP Network

The GWP network is organized around the GWPO (Secretariat and TEC), 13 RWPs and 80 CWPs¹²

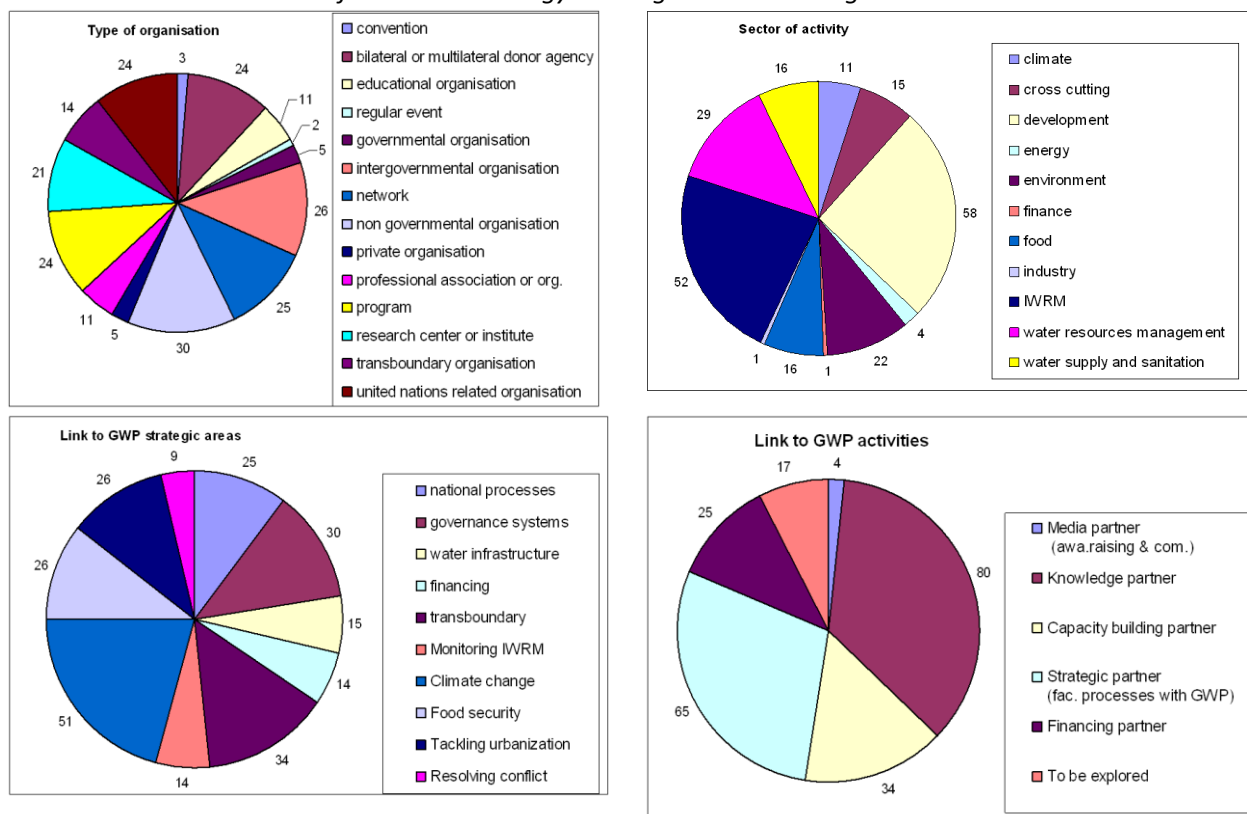


¹² See description in Strategy and other documents

4.1.6 GWP Allies

GWP is intervening in 13 regions and globally with a wide array of allies.

Basic statistics on GWP allies from GWP Strategy and regional Work Programme



5. Annex B GWP Simplified Results Framework

GWP simplified Results Framework

GWP Impact

GWP impact lies in the **socio-economic and environmental benefits** derived from better water resources governance & management in the countries and regions where GWP is active.

LFA level	Description	Indicators	
Impact	A Water Secure World: A higher level of water security and climate resilience achieved in developing countries, transboundary basins and economic regions	I1	Number of people benefiting from improved water resources planning and management
		I2	Total value of investment influenced which contributes to water security and climate resilience through improved WRM & water services

GWP Key Water Governance Outcomes

GWP main Outcomes lie in the **governance improvements** introduced by actors at all levels where GWP is active. These governance improvements are called hereafter GWP Key Water Governance Outcomes and occur in “change areas” which cover the wide array of the water governance spectrum. A comprehensive classification of these “change areas” and related Integrated Water Resources Management (IWRM) tools has been developed by GWP, as reflected in the GWP ToolBox classification structure (ref.

www.gwptoolbox.org) organised in three main clusters:

- A. The **enabling environment** (policies, legal frameworks)
- B. The **institutional arrangements**; and
- C. The **management instruments** for sharing data/information, assessing, planning, negotiating, cooperating, regulating and financing management and development.

Those are the areas where changes are happening on the ground via the actors of the water sector benefiting from GWP interventions. Each GWP entity applies the Outcome Mapping approach to identify the key boundary actors to influence in order to have a chance to foster these changes. The way GWP would like to see these boundary actors influenced is articulated via “Outcome challenges”.

LFA level	Description	Indicators
Outcome	Sustainable development and management of water resources at all levels	<i>Series of indicators recording changes in Water Governance influenced by GWP, following ToolBox structure</i>
		# Number of Enabling Environment elements influenced # Number of Institutional Arrangements influenced # Number of Management Instruments influenced
		<i>More specifically: 6 Indicators followed closely, including Targets</i>
		O1 Number of policies, plans and strategies which integrate water security for climate resilience
		O2 Number of approved investment plans associated with policies, plans and strategies which integrate water security for climate resilience
		O3 Number of agreements/commitments on enhanced water security at transboundary/regional level influenced.
		O4 Number. of investment strategies supporting policies and plans which integrate water security for climate resilience
		O5 Number of enhanced legal frameworks / policies / strategies integrating water security and climate change facilitated by GWP
		O6 Gender: Percentage of women and girls benefiting from interventions to improve water security (min %).
		O7 Youth: Number of youth organisations involved in water resources decision making bodies.
Outcome Challenges Goal 1	Boundary actors ensure that water is a key part of sustainable development	OC1.n <i>Set of Outcome Challenges defined in the Work Programme of each GWP entity (incl. Progress Markers as Goal Posts)</i>
Outcome Challenges Goal 2	Boundary Actors use increased knowledge & communication capacity	OC2.n <i>Set of Outcome Challenges defined in the Work Programme of each GWP entity (incl. Progress Markers as Goal Posts)</i>
Outcome Challenges Goal 3	Boundary Actors use increased networking capacity	OC3.n <i>Set of Outcome Challenges defined in the Work Programme of each GWP entity (incl. Progress Markers as Goal Posts)</i>

GWP Outputs

GWP outputs lie in **the services and products** delivered by the GWP network which foster sustainable governance improvements of the water systems (via influenced boundary actors).

LFA level	Description	Indicators	
Output 1	Facilitation packages for countries, regions and global level implemented, incl. innovative, sustainable IWRM solutions demonstrated	OT1.1	Recognition of GWP contribution to the global debate measured by number of acknowledgments in official documents
		OT1.2	Number of regional organisations supported in developing agreements/commitments /investment options and tools that integrate water security and climate resilience
		OT1.3	Number of national organisations supported in developing legal frameworks / policies / strategies, sectoral and development plans-integrating water security and climate resilience
		OT1.4	Number of organisations (all levels) supported in the development of investment strategies supporting policies and plans which integrate water security for climate resilience
		OT1.5	Number of countries supported in the development of capacity and projects to access climate and climate-related finance to improve water security.
		OT1.6	Number of demonstration projects undertaken for which innovation has been demonstrated
		OT1.7	Number of documents produced outlining the lessons from GWP demonstration projects and a plan for replicating solutions
		OT1.8	Number of beneficiaries supported in demonstration projects on water security and climate resilience undertaken
Output 2	Knowledge and capacity developed, disseminated and used	OT2.1	Number of government institutions/other stakeholders with demonstrably enhanced capacity to integrate water security and climate change in the design and implementation of policies, plans & projects
		OT2.2	Number of south-south lesson learning & knowledge transfers initiatives with commitments for concrete follow up
		OT2.3	Number of media features on climate change and water security linked to the Water Security Programme. All media including radio, television, print, internet.
		OT2.4	Number of publications, knowledge products (including strategic messages) and tools for water security & climate resilience developed and disseminated
		OT2.5	User satisfaction across knowledge products and services produced, managed and disseminated by GWP.
		OT2.6	Number of joint global/regional activities by GWP and WPP on climate change and water security which lead to demonstrable follow-up actions.
Output 3	An effective Global Action Network of partners sustained	OT3.1	Implementation of Results Framework & associated M&E across the GWP network.
		OT3.2	Increased financial performance across all Regional and Country Water Partnerships.

Detailed description of GWP Results Framework indicators

GWP impact

Overall impact: *A Water Secure World: A higher level of water security and climate resilience achieved in developing countries, transboundary basins and economic regions*

Impact 1 (I1) – Quality of life	
Indicator	Number of people benefiting from improved water resources planning and management
Purpose	To measure tangible improvements in the quality of life among target populations attributed to water management
Unit of measurement	Number of people
Examples of contributing results (as influenced by GWP activities)	<p>Results which demonstrate conclusive change in the wellbeing of people as a consequence of water management interventions, such as:</p> <ul style="list-style-type: none"> - Flood defence scheme that provides protection to X number of people - Construction and management of urban sanitation system that reduces the risk of disease among a population of X - Drought tolerant crops adopted by X number of farmers - Etc. <p>Note: Results that <i>may lead to</i> tangible benefits, such as planning documents, commitment of funds and provision of tools, are not relevant for this indicator</p>
Data collection	
Method & sources	<ul style="list-style-type: none"> - Direct: GWP internal reporting system - Indirect: Secondary data from national and international development reports (e.g. WHO JMP, World Bank, OECD, national monitoring programmes, etc.)
Timing & frequency	The target is set for 2018 with indicative assessments provided at 2 year intervals
Monitoring responsibility	<ul style="list-style-type: none"> - GWP RWPs in liaison with CWPs - GWPO
Other	
Limitations	Secondary data collection sources – It is challenging to measure, attribute and verify the link between GWP-related activities and outputs to impacts resulting from implementation of activities, outputs, outcomes and investments by others
Proxy	<ul style="list-style-type: none"> - Number of incidences of water borne disease - % water supply coverage - % sanitation coverage - Flood/drought risk vulnerability status - Etc.

Impact 2 (I2) – Investment	
Indicator	Total value of investment influenced which contributes to water security and climate resilience through improved WRM & water services
Purpose	To measure expenditure (public, private, donor) contributing to water security and climate resilience that has been directly and indirectly influenced by GWP activities
Unit of measurement	US \$
Examples of contributing results (as influenced by GWP activities)	<p>Results which record implemented investment, such as:</p> <ul style="list-style-type: none"> - XX \$ of national funds invested in identified strategic water security priorities - XX \$ of private capital invested in water service delivery - XX \$ from X climate funding mechanism invested in no/low regret initiative - Etc. <p>Note: Results that <i>may lead to</i> investments in water security and climate resilience, such as committed development funds and approved allocation of project budgets, are not relevant for this indicator.</p>
Data collection	
Method & sources	<ul style="list-style-type: none"> - Direct: GWP internal reporting system - Indirect: IFI reports and national investment monitoring reports
Timing & frequency	2016 & 2019
Monitoring responsibility	<ul style="list-style-type: none"> - GWP RWPs in liaison with CWP - GWPO
Other	
Limitations	Difficulty of attributing specific investments to the broader GWP contribution. This limitation can be reduced by GWP monitoring individual countries where programmes targeted specifically at financing and investment have been implemented
Proxy	<ul style="list-style-type: none"> - Completion rates of water infrastructure projects - Achievement of national and/or local water resources planning targets

GWP Key Water Governance Outcomes

Overall outcome: Sustainable development and management of water resources at all levels

Outcome 1 (O1) – Policy & strategic planning	
Indicator	Number of policies, plans and strategies which integrate water security for climate resilience
Purpose	To measure the extent to which water security and climate resilience needs have been integrated within government policy and strategic planning frameworks at regional, national and subnational level
Unit of measurement	Number of policies, plans and/or strategies
Examples of contributing results (as influenced by GWP activities)	<p>Results which demonstrate that water security and climate resilience principles have been formally recognised (i.e. listed as a planning requirement, recommendation, or similar) within official government (regional, national, subnational) documentation, for example:</p> <ul style="list-style-type: none"> - Water security and climate resilience included as criteria for making investment decisions in national development planning system - Water security solutions and initiatives included as part of a local development plan - Water resource management objectives, indicators and targets included within a national strategy on sustainable growth - Climate adaptation highlighted as a priority area in revised policy on land development - Etc. <p>Note: Policy and strategic planning documents that, for example, highlight climate change as a future threat but which do not <i>address the issue</i> through concrete policy recommendations, identified climate resilient solutions, etc. are less relevant for this indicator.</p>
Data collection	
Method & sources	<ul style="list-style-type: none"> - Direct: GWP internal reporting system - Indirect: UN-Water Survey Report
Timing & frequency	Annual
Monitoring responsibility	<ul style="list-style-type: none"> - GWP RWPs in liaison with CWPs - GWPO
Other	
Limitations	Although specific policies, plans and strategies can be easily identified, it is a challenge to measure, attribute and verify GWP-related activities and outputs to activities and investments by others.
Proxy	

Outcome 2 (O2) – Financial commitment	
Indicator	Number of approved investment plans associated with policies, plans and strategies which integrate water security for climate resilience
Purpose	To measure the extent to which funds have been secured for the implementation of water security and climate resilience interventions
Unit of measurement	Number of investment plans at regional, national and/or subnational level
Examples of contributing results (as influenced by GWP activities)	<p>Results which demonstrate the formal commitment of funds for the implementation of water security and climate resilience interventions, such as:</p> <ul style="list-style-type: none"> - XX US \$ assigned to selected water security measures included in national budget - Signed-off budget in local development plan to enable the incorporation of climate resilience measures into planned sectoral investments (such as housing, land development, road construction, etc.) - Funding dedicated to climate resilience research included in approved national agriculture plan - Etc. <p>Note: Results that show the <i>intention</i> to allocate finances to water security and climate resilience are not relevant for this indicator.</p>
Data collection	
Method & sources	- Direct: GWP internal reporting system
Timing & frequency	Annual
Monitoring responsibility	<ul style="list-style-type: none"> - GWP RWPs in liaison with CWP - GWPO
Other	
Limitations	Although specific investment plans can be easily identified, it is a challenge to measure, attribute and verify GWP-related activities and outputs to activities and investments by others.
Proxy	

Outcome 3 (O3) – Regional cooperation	
Indicator	Number of agreements/commitments on enhanced water security at transboundary/regional ¹³ level influenced
Purpose	To measure advancements in regional/transboundary water management cooperation
Unit of measurement	Number of agreements/commitments
Examples of contributing results (as influenced by GWP activities)	<p>Results which demonstrate that a formal cross-border arrangement has been reached between two or more parties, such as:</p> <ul style="list-style-type: none"> - Memorandum of Understanding signed between nations mandating the implementation of a river basin management plan - Financial commitment by members of a Regional Economic Community for the implementation of a regional climate adaptation plan - River Basin Organisation established by representatives of four provincial governments to coordinate the management of a shared catchment - Etc. <p>Note: Activities that <i>may lead</i> to agreements/commitments such as regional dialogues, stakeholder consultations, recommendations for cross-border cooperation, etc. are not relevant for this indicator.</p>
Data collection	
Method & sources	<ul style="list-style-type: none"> - Direct: GWP internal reporting system - Indirect: Information from RBOs and RECs involved in GWP programmes
Timing & frequency	Annual
Monitoring responsibility	<ul style="list-style-type: none"> - GWP RWP in liaison with CWP - GWPO
Other	
Limitations	
Proxy	

¹³ Note: The regional/transboundary level can refer to cross-border interaction between countries (e.g. two or more nations that share a common river basin) as well as within Federal States (e.g. across state boundaries)

Outcome 4 (O4) – Financial planning	
Indicator	Number of investment strategies supporting policies and plans which integrate water security for climate resilience
Purpose	To measure the extent to which funds have been formally requested for the implementation of water security and climate resilience interventions
Unit of measurement	Number of investment strategies developed to which the GWP network has contributed
Examples of contributing results (as influenced by GWP activities)	<p>Results which demonstrate that there is a formal recognition of the importance of water security and climate resilience and consequently the identification of public funds designated for this purpose, such as:</p> <ul style="list-style-type: none"> - Climate resilient expenditure makes up X proportion of required funding within an agriculture investment strategy - Local government identifies the need for significant investment in water supply infrastructure within its annual budget request - Etc. <p>Note: Reports and studies on the cost of water security and climate resilience measures, even if commissioned by government, are not applicable for this indicator</p>
Data collection	
Method & sources	<ul style="list-style-type: none"> - Direct: GWP internal reporting system - Indirect: IFI reports and national investment monitoring reports
Timing & frequency	Annual
Monitoring responsibility	<ul style="list-style-type: none"> - GWP RWPs in liaison with CWP - GWPO
Other	
Limitations	
Proxy	

Outcome 5 (O5) – Legislation	
Indicator	Number of enhanced legal frameworks/policies/strategies integrating water security and climate change facilitated by GWP
Purpose	To measure the extent to which water security and climate resilience influences legislative reform and development
Unit of measurement	Number of legal frameworks / policies / strategies
Examples of contributing results (as influenced by GWP activities)	<p>Results which demonstrate that legislation and regulation has been developed and/or revised in accordance with the requirements of achieving increased water security and climate resilience, for example:</p> <ul style="list-style-type: none"> - The passing of revised planning legislation which restricts the development of land on identified flood plains - The enhancement of regulation which protects by law the discharge of untreated wastewater into natural water bodies - New legislation developed to enable a utility to introduce water tariffs <p>Note: Lobbying activities and <i>proposed</i> legal reform is not relevant for this indicator</p>
Data collection	
Method & sources	- Direct: GWP internal reporting system
Timing & frequency	Annual
Monitoring responsibility	<ul style="list-style-type: none"> - GWP RWPs in liaison with CWP - GWPO
Other	
Limitations	
Proxy	

Outcome 6 (O6) – Gender equity	
Indicator	Gender: Percentage of women and girls benefiting from interventions to improve water security (min %).
Purpose	To measure progress towards gender equity through the quantification of the proportion of beneficiaries associated with GWP activities that are female.
Unit of measurement	% of direct beneficiaries that are female
Examples of contributing results (as influenced by GWP activities)	<p>Results which accurately estimate the number of women (as a proportion of the total number of people) that have benefited from GWP activities, for example:</p> <ul style="list-style-type: none"> - Water management investment that targets improved sanitary facilities for girls in schools – Reported result: 100% of beneficiaries are female (all users of the new facilities) - Improved irrigation facilities provided for urban agriculture in city X – Reported result: 66% of beneficiaries are female (two-thirds of those practising urban agriculture in the targeted area are women) - Installation of Early Warning System for floods – Reported result: 50% of beneficiaries are female (intervention benefits the target community as a whole with no bias towards men and women) - Organisation of a training workshop on adaptation to climate change at the local level – Reported result: 20% of beneficiaries are female (5 out of 25 workshop participants were women) - Etc. <p>Note: Beneficiaries refers to people who have been empowered as a consequence of water management interventions. The estimate of the proportion of these that are female needs to be made on a case-by-case basis followed by the calculation of an overall percentage for all interventions.</p>
Data collection	
Method & sources	- Direct: GWP internal reporting system
Timing & frequency	In line with Impact I1
Monitoring responsibility	<ul style="list-style-type: none"> - GWP RWPs in liaison with CWPs - GWPO
Other	
Limitations	Difficult to collect, attribute and verify absolute data and link to activities and outputs of the GWP network
Proxy	<ul style="list-style-type: none"> - Proportion of women benefiting from the implementation of demonstration projects (see Output 2.3 – Demo project target) - Proportion of women gaining from capacity building activities (see Output 3.1 – Capacity building)

Outcome 7 (O7) – Youth involvement	
Indicator	Youth: Number of youth organisations involved in water resources decision making bodies.
Purpose	To measure progress towards the empowerment of youth to participate in decision making processes
Unit of measurement	Number of youth organisations
Examples of contributing results (as influenced by GWP activities)	<p>Results which demonstrate that youth organisations have interacted with and exerted influence within the bodies responsible for water resources decisions at regional, national and/or sub-national level, for example:</p> <ul style="list-style-type: none"> - A Water & Youth Network is allocated a seat on a Task Force set up by national government to evaluate water supply options for a water stressed catchment - A community-based Youth Forum actively participates in multi-stakeholder dialogues on a water supply and sanitation investment strategy for a low-income urban district <p>Note: Activities in which youth organisations have contributed to a consultation process but for which <i>there is no evidence that this contribution was considered</i> by the relevant decision making bodies are not applicable for this indicator.</p>
Data collection	
Method & sources	- Direct: GWP internal reporting system
Timing & frequency	Annual
Monitoring responsibility	<ul style="list-style-type: none"> - GWP RWPs in liaison with CWPs - GWPO
Other	
Limitations	Difficult to verify the genuine influence that involved youth organisations have within decision making bodies
Proxy	

GWP Outputs - Output 1

Overall output: Facilitation packages for countries, regions and global level implemented, incl. Innovative, sustainable IWRM solutions demonstrated

Output 1.1 (OT1.1) – Global influence	
Indicator	Recognition of GWP contribution to the global debate measured by number of acknowledgments in official documents
Purpose	To measure the extent to which the work of GWP is guiding and contributing to the global debate on water security and climate resilience
Unit of measurement	Number of acknowledgements to GWP
Examples of contributing results (as influenced by GWP activities)	<p>Results which demonstrate that the work carried out by GWP is being recognised and made use of within the global debate, for example:</p> <ul style="list-style-type: none"> - Reference to GWP publications and resources in WPP guidance note - GWP expert contribution to UN-Water publication - Inclusion of GWP statement in UNFCCC position paper - Etc. <p>Note: The indicator measures <i>formal</i> recognition of GWP's contribution. References to GWP in academic papers, news articles, conference/workshop attendance lists, etc. are not applicable for this indicator</p>
Data collection	
Method & sources	- Direct: GWPO NOs and Communications team
Timing & frequency	Continuous
Monitoring responsibility	- GWPO
Other	
Limitations	Difficult to quantify
Proxy	

Output 1.2 (OT1.2) – Regional level support	
Indicator	Number of regional organisations supported in developing agreements/commitments/investment options and tools that integrate water security and climate resilience
Purpose	To measure GWPs contribution to the drafting of agreements/commitments, development of regional strategies/plans and the allocation of budgets at the regional/transboundary level
Unit of measurement	Number of regional organisations supported
Examples of contributing results (as influenced by GWP activities)	<p>Results which demonstrate that support activities (the need for which is acknowledged, and even identified, by the recipient) to complete <i>specific tasks</i> have been carried out at the regional level, such as:</p> <ul style="list-style-type: none"> - Expert contribution to the development of a drought monitoring system for a transboundary climate adaptation task force - Facilitation of a high-level stakeholder workshop on political cooperation for members of a Regional Economic Community - Training for members of a River Basin Organisation on the use of decision support tools for the selection of appropriate solutions to be implemented through regional investments - Etc. <p>Note: Results relevant for this indicator are typically demand-led and always address a clear need or outcome. Capacity development more generally such as training workshops, provision of guidance material, awareness raising activities, etc. are not applicable.</p>
Data collection	
Method & sources	- Direct: GWP internal reporting system
Timing & frequency	Continuous
Monitoring responsibility	<ul style="list-style-type: none"> - GWP RWPs in liaison with CWPs - GWPO
Other	
Limitations	The term support can be interpreted in many ways
Proxy	

Output 1.3 (OT1.3) – National level support	
Indicator	Number of national organisations supported in developing legal frameworks/ policies/strategies, sectoral and development plans - integrating water security and climate resilience
Purpose	To measure the extent to which GWP is directly contributing to the integration of water security and climate resilience into national policy development, planning processes and regulatory/legislative frameworks
Unit of measurement	Number of national organisations supported
Examples of contributing results (as influenced by GWP activities)	<p>Results which demonstrate that support activities (the need for which is acknowledged, and even identified, by the recipient) to complete specific tasks have been carried out at the national level, such as:</p> <ul style="list-style-type: none"> - The development of a standardised regional template to aid countries in preparing climate and water inclusive plans - Establishment of a national coordinating mechanism for mainstreaming water issues into National Development Sector Plans - Advisory role to the national planning commission of country X in the development of a long-term National Development Plan - Facilitation of a multi-stakeholder engagement process for input into the selection process of nationally funded water management solutions - Legal advice provided in the drafting of revised water management legislation - Etc. <p>Note: Results relevant for this indicator are typically demand-led and always address a clear need or outcome. Capacity development more generally such as training workshops, provision of guidance material, awareness raising activities, etc. are not applicable.</p>
Data collection	
Method & sources	- Direct: GWP internal reporting system
Timing & frequency	Continuous
Monitoring responsibility	- GWP RWPs in liaison with CWPs - GWPO
Other	
Limitations	The term support can be interpreted in many ways
Proxy	

Output 1.4 (OT1.4) – Strategic investment support	
Indicator	Number of organisations (all levels) supported in the development of investment strategies supporting policies and plans which integrate water security for climate resilience
Purpose	To measure the extent to which GWP is contributing to the development of regional, national and subnational investment strategies
Unit of measurement	Number of organisations supported
Examples of contributing results (as influenced by GWP activities)	<p>Results which demonstrate that support activities (the need for which is acknowledged, and even identified, by the recipient) to complete specific tasks in direct relation to investment planning have been carried out, such as:</p> <ul style="list-style-type: none"> - Support to government officials to integrate climate resilient investment programs into Medium Term Expenditure Frameworks - Dialogues organised between ministers in charge of water, finance and environment - Expert contribution to the financial aspects of a municipality's water resources plan - Etc. <p>Note: Results relevant for this indicator are typically demand-led and always address a clear need or outcome. Capacity development more generally such as training workshops, provision of guidance material, awareness raising activities, etc. are not applicable.</p>
Data collection	
Method & sources	- Direct: GWP internal reporting system
Timing & frequency	Continuous
Monitoring responsibility	<ul style="list-style-type: none"> - GWP RWPs in liaison with CWPs - GWPO
Other	
Limitations	The term support can be interpreted in many ways
Proxy	

Output 1.5 (OT1.5) – Climate-related finance	
Indicator	Number of countries supported in the development of capacity and projects to access climate and climate-related finance to improve water security.
Purpose	To measure the extent to which GWP is contributing to target countries' capacity to access climate-related finance
Unit of measurement	Number of countries
Examples of contributing results (as influenced by GWP activities)	<p>Results which demonstrate that relevant regional, national and/or subnational authorities within a country have received direct support (in terms of both awareness and capability) to access climate related finances, such as:</p> <ul style="list-style-type: none"> - Support to national governments on how to leverage resources for investment by development banks and other financiers. - Meeting on climate-related financing opportunities organised with relevant national government officials in country X - Technical assistance to enable country X to prepare projects that can attract financing from climate funds - Initiative to support internal cash generation in country X - Etc. <p>Note: The indicator refers to the development of capacity to independently access climate financing. Results that show external acquisition of financing <i>on behalf of</i> the target countries are not relevant.</p>
Data collection	
Method & sources	- Direct: GWP internal reporting system
Timing & frequency	To be added along with targets
Monitoring responsibility	<ul style="list-style-type: none"> - GWP RWPs in liaison with CWPs - GWPO
Other	
Limitations	Difficult to link attribution to the contribution of GWP only. Outcome mapping through GWP's ongoing M&E may establish some plausible linkages
Proxy	Number of countries accessing climate adaptation funds and the volume of funds accessed by countries for which GWP programmes have contributed to developing capacity and projects that improve water security

Output 1.6 (OT1.6) – Demo project implementation	
Indicator	Number of demonstration projects undertaken for which innovation has been demonstrated
Purpose	To measure progress on piloting and demonstrating innovative approaches and technologies
Unit of measurement	Number of demonstration projects
Examples of contributing results (as influenced by GWP activities)	<p>Results which demonstrate the implementation of an innovative technology and/or approach with the aim of testing its viability and demonstrating its potential in order to promote uptake at a larger scale, such as:</p> <ul style="list-style-type: none"> - Installation of a constructed wetland - Implementation of a community decentralised wastewater treatment and reuse project - Establishment of an IWRM coordination unit - Piloting the performance of drought resistance crops on selected farms - Etc. <p>Note: Demonstration projects should have clearly stated objectives to increase the knowledge base and reduce uncertainty/risk associated with innovative solutions. Relevant results are not limited to the implementation of small-scale projects and may also be derived from initiatives that demonstrate innovation on a larger scale (e.g. institutional reform at the regional level)</p>
Data collection	
Method & sources	- Direct: GWP internal reporting system
Timing & frequency	Annual
Monitoring responsibility	<ul style="list-style-type: none"> - GWP RWPs in liaison with CWP - GWPO
Other	
Limitations	
Proxy	

Output 1.7 (OT1.7) – Demo project documentation	
Indicator	Number of documents produced outlining the lessons from GWP demonstration projects and a plan for replicating solutions
Purpose	To measure the extent to which demonstration project results are documented and made available to support the uptake of innovative water management solutions at scale
Unit of measurement	Number of documents per demonstration project
Examples of contributing results (as influenced by GWP activities)	<p>Results which document the implementation of demonstration projects through performance analysis, project outcome conclusions, and recommendations for replication, such as:</p> <ul style="list-style-type: none"> - Technical report analysing the results from a greywater recycling pilot project - Assessment of stakeholder survey results - Lessons learned report following an institutional restructuring pilot project - Cost-benefit analysis of a rainwater harvesting scheme - Etc. <p>Note: Results in the form of raw data, technical drawings, technology descriptions, and other non-analytical outputs are not relevant for this indicator.</p>
Data collection	
Method & sources	- Direct: GWP internal reporting system
Timing & frequency	Annual
Monitoring responsibility	<ul style="list-style-type: none"> - GWP RWPs in liaison with CWPs - GWPO
Other	
Limitations	
Proxy	Uptake of demonstrated solutions

Output 1.8 (OT1.8) – Demo project targets	
Indicator	Number of beneficiaries supported in demonstration projects on water security and climate resilience undertaken
Purpose	To measure the number of people benefiting directly from the implementation of demonstration projects
Unit of measurement	Number of beneficiaries (individuals)
Examples of contributing results (as influenced by GWP activities)	<p>Results which quantify the number of people directly benefiting as a consequence of the implementation of a demonstration project, such as:</p> <ul style="list-style-type: none"> - Community of 150 benefiting from more reliable water supply as a result of a rainwater harvesting initiative - Increased protection from coastal flooding for 25 households following the cultivation of mangrove plantations - Etc. <p>Note: The indicator does not refer to people who are expected to benefit indirectly from the intervention, i.e. the population that could <i>potentially</i> gain from the project outcomes should wider uptake occur are not relevant.</p>
Data collection	
Method & sources	- Direct: GWP internal reporting system
Timing & frequency	Annual
Monitoring responsibility	<ul style="list-style-type: none"> - GWP RWPs in liaison with CWP - GWPO
Other	
Limitations	
Proxy	

GWP Outputs - Output 2

Overall output: Knowledge and capacity developed, disseminated and used

Output 2.1 (OT2.1) – Capacity building	
Indicator	Number of government institutions/other stakeholders with demonstrably enhanced capacity to integrate water security and climate change in the design and implementation of policies, plans & projects (GWP/WPP)
Purpose	To measure the (assumed) extent to which capacity has been developed among key stakeholders to integrate water security and climate resilience into the design and implementation of policies, plans and projects
Unit of measurement	Number of governmental and non-governmental organisations (<i>please note that the indicator measures the number of organisations and <u>not</u> the number of individuals</i>)
Examples of contributing results (as influenced by GWP activities)	<p>Results which demonstrate that capacity has been developed among staff of government institutions/other stakeholders, i.e. results which show with a reasonable degree of certainty that organisations have gained from (rather than simply been exposed to) capacity building activities, for example:</p> <ul style="list-style-type: none"> - Participant evaluation following three-day workshop on climate change adaptation provided for 25 national government officials - X number of utility staff successfully completing an online training course - Follow-up survey to assess impact of a training workshop on good governance - Etc. <p>Note: Results which <i>assume</i> that capacity has been built, such as distribution of support materials, delivery of a series of presentations at a conference, number of participants at a workshop, etc. are not necessarily relevant unless the impact of these activities can be clearly shown.</p>
Data collection	
Method & sources	- Direct: GWP internal reporting system
Timing & frequency	Annual
Monitoring responsibility	<ul style="list-style-type: none"> - GWP RWPs in liaison with CWP - GWPO
Other	
Limitations	Attribution of the links between the capacity building activities of the organisations and the beneficial impacts and outcomes is not easily made nor quantifiable
Proxy	

Output 2.2 (OT2.2) – South-south knowledge exchange	
Indicator	Number of south-south lesson learning & knowledge transfers initiatives with commitments for concrete follow up.
Purpose	To measure the extent to which policy makers, planners, managers, etc. from target countries are exposed to, and are utilising, the results of projects/activities/initiatives that have been successfully (and unsuccessfully) implemented under similar conditions elsewhere
Unit of measurement	Number of initiatives
Examples of contributing results (as influenced by GWP activities)	<p>Results which demonstrate the leverage gained from the implementation of south-south learning and knowledge transfer initiatives, such as:</p> <ul style="list-style-type: none"> - South-south twinning project that results in the training of engineers to design and implement innovative technology - Formal partnerships established between nations for the sharing of climate data - Etc. <p>Note: The number of initiatives <i>launched</i> is not a sufficient result for this indicator. It is rather the leverage that these activities have achieved which is of interest.</p>
Data collection	
Method & sources	- Direct: GWP internal reporting system
Timing & frequency	Annual
Monitoring responsibility	<ul style="list-style-type: none"> - GWP RWPs in liaison with CWPs - GWPO
Other	
Limitations	
Proxy	

Output 2.3 (OT2.3) – Awareness raising	
Indicator	Number of media features on climate change and water security linked to the Water Security Programme. All media including radio, television, print, internet.
Purpose	To measure the outreach of awareness raising campaigns on the importance of investing in water security and climate resilience
Unit of measurement	Number of media features
Examples of contributing results (as influenced by GWP activities)	<p>Results which record the number of media features initiated including the extent of their outreach and anticipated impact, such as:</p> <ul style="list-style-type: none"> - Radio campaign on the need to save water during times of drought - Multi-media initiative highlighting the health risks of consuming water from polluted sources - X number of people targeted through leaflets distributed at community centres promoting the benefits of good sanitary practice - Etc. <p>Note: Results should be associated with established media channels with clear access to the general public (i.e. radio, television, print, internet) and not dissemination channels with limited outreach such as conference materials, etc.</p>
Data collection	
Method & sources	- Direct: GWP internal reporting system
Timing & frequency	To be added along with targets
Monitoring responsibility	<ul style="list-style-type: none"> - GWP RWPs in liaison with CWPs - GWPO
Other	
Limitations	
Proxy	

Output 2.4 (OT2.4) – Knowledge development	
Indicator	Number of publications, knowledge products (including strategic messages) and tools for water security & climate resilience developed and disseminated
Purpose	To measure the production and availability of GWP materials developed with the aim of facilitating improved understanding among key stakeholders on the issues of water security and climate resilience
Unit of measurement	Number of publications, documents and other knowledge products
Examples of contributing results (as influenced by GWP activities)	<p>Results which demonstrate an increase the available knowledge base for relevant stakeholders, such as:</p> <ul style="list-style-type: none"> - A published review of good drought management practices in Europe - Region specific climate change adaptation handbook for decision-makers produced and disseminated to XX government officials - Online tool developed for collecting and storing meteorological data - Series of factsheets on Integrated Urban Water Management translated into Spanish and disseminated in Region X - Etc. <p>Note: GWP should have had <i>direct input</i> into the development, modification and/or dissemination of the knowledge products referred to (although the ownership of a product may sit with an external partner). Products should also be of <i>relevance</i> to the local conditions and target audience in the area of interest</p>
Data collection	
Method & sources	- Direct: GWP internal reporting system
Timing & frequency	Annual
Monitoring responsibility	<ul style="list-style-type: none"> - GWP RWPs in liaison with CWPs - GWPO
Other	
Limitations	
Proxy	

Output 2.5 (OT2.5) – User satisfaction	
Indicator	User satisfaction across knowledge products and services produced, managed and disseminated by GWP.
Purpose	To measure the impact of knowledge products and services particularly the extent to which user needs are being met and where improvements are required
Unit of measurement	User satisfaction scores
Examples of contributing results (as influenced by GWP activities)	<p>Results generated from questionnaires and surveys completed by key users of GWP knowledge products and services, for example:</p> <ul style="list-style-type: none"> - Results from GWP Toolbox satisfaction surveys - Number of page hits on relevant knowledge pages - Results from regional and global GWP surveys on publications - Average quality assessment score of climate adaptation guidelines as evaluated through feedback survey sent to main publication target groups - Recommended improvements to GWP knowledge products and services based on online user feedback questionnaire - Etc. <p>Note: User satisfaction scores can be obtained through a number of methods and channels, including, but not necessarily limited to, standard GWP survey procedures. These should however collect feedback information systematically through a neutral and robust methodology to allow meaningful conclusions to be drawn from the results.</p>
Data collection	
Method & sources	<ul style="list-style-type: none"> - Questionnaires and surveys at global level - Questionnaires and surveys at regional level - Direct: GWP internal reporting system
Timing & frequency	Dependent on method
Monitoring responsibility	<ul style="list-style-type: none"> - GWPO Secretariat - GWP Regional Secretariats
Other	
Limitations	Substantiated by internal reports
Proxy	

Output 2.6 (OT2.6) – Collaboration with other programmes	
Indicator	Number of joint global/regional activities by GWP and WPP on climate change and water security which lead to demonstrable follow-up actions.
Purpose	To measure the extent to which GWP collaborates with WPP on activities that achieve common goals and objectives
Unit of measurement	Number of joint GWP/WPP activities
Examples of contributing results (as influenced by GWP activities)	<p>Results which can be shown to be attributable to collaborative activities carried out jointly by GWP and WPP, such as:</p> <ul style="list-style-type: none"> - Workshop on making use of adaptation planning tools organised jointly by GWP and WPP leading to the development of a Regional Adaptation Strategy - Water users association established in river basin X following a process facilitated jointly by GWP and WPP - Collated data from climate research initiatives conducted jointly by GWP and WPP used for scenario development by regional meteorological planning body X - Etc. <p>Note: The indicator is intended to measure collaborative activities that have led to, or significantly influenced, tangible action. The number of joint activities per se is not relevant for this indicator.</p>
Data collection	
Method & sources	- Direct: GWP & WPP workplans and records
Timing & frequency	Annual
Monitoring responsibility	- GWPO
Other	
Limitations	Substantiated by internal reports
Proxy	

GWP Outputs - Output 3


Overall goal: *An effective Global Action Network of partners sustained*

Output 3.1 (OT3.1) – M&E reporting	
Indicator	Implementation of Results Framework & associated M&E across the GWP network.
Purpose	To measure the effectiveness and efficiency of activities carried out by the organisation in order to better understand the drivers and barriers associated with the achievement of strategic goals and to learn from experience
Unit of measurement	RWP performance assessment score
Examples of contributing results (as influenced by GWP activities)	M&E results which capture progress towards the GWP vision, such as: <ul style="list-style-type: none"> - Scoring of indicators - Monthly reporting - Annual reporting against progress markers - Programme / project quarterly reports - Financial reporting - Fund raising - Communication - Network governance - Etc.
Data collection	
Method & sources	- Direct: GWP internal reporting system; achievement of targets associated with indicators
Timing & frequency	Continuous
Monitoring responsibility	- GWPO
Other	
Limitations	Substantiated by internal reports
Proxy	

Output 3.2 (OT3.2) – Locally-raised funding	
Indicator	Increased financial performance across all Regional and Country Water Partnerships.
Purpose	To measure the performance of the GWP RWPs to raise funds over and above that provided by GWPO for regional and local programme and project implementation.
Unit of measurement	Locally-raised regional funds as a proportion of core-funding provided by GWPO
Rationale	Measures the amount of locally raised funding leveraged by RWPs/CWPs
Examples of contributing results (as influenced by GWP activities)	<p>The amount of locally raised funding leveraged by RWPs/CWPs as a proportion of core-funding provided by GWPO, for example:</p> <ul style="list-style-type: none"> - 50% of GWPO core-funding matched by locally sourced funds by Region X – Result: 0.5/1 <p>Note: In-kind contributions are applicable on the condition that these can be transparently quantified and validated.</p>
Data collection	
Method & sources	- Direct: Performance of RWPs as monitored by GWPO through regular financial reporting and NO liaison
Timing & frequency	Annual
Monitoring responsibility	- GWPO
Other	
Limitations	Difficulty in quantifying in-kind contributions
Proxy	

Monitoring Datasheet by entity

The datasheet in use to summarize the monitoring information relating a particular GWP entity is presented below:

		BRIEF EXPLANATIONS RELATING TO THE VARIOUS SECTIONS OF THE DATA SHEET			
					
IMPACT (Socio-Economic Benefits)		Entity	REG	TB	Country 1 Country 2
	Value Added (proxy €):	This section is meant to capture GWP impact at different scales: whole GWP system, Global level, Regional level (13 regions), Transboundary level, National level. A robust methodology to assess this impact is yet to be developed.			
	Beneficiaries (NB):				
	Investments (leverage):				
	Value Added (proxy €):				
	Beneficiaries (NB):				
OUTCOMES (Key Water Governance improvements)		Entity	REG	TB	Country 1 Country 2
	A Policies	This section is meant to capture GWP outcomes at different scales: whole GWP system, Global level, Regional level (13 regions), Transboundary level, National level. The approach used is based on a routine recording of "changes" fostered/influenced by GWP within the "water governance systems" at these levels. The classification of governance elements considered is based on the GWP ToolBox structure (60 governance elements grouped into 14 sub-categories and ultimately in 3 main areas: Policies, Institutional arrangements and Management Instruments).			
	B Institutional roles				
	C Management Instruments				
	Cumulative GWP	The data are collected routinely from all monitoring and project reports. (Work in progress - A thorough check is currently underway)			
	Total				
PROGRESS MARKERS (Actors influenced)		Entity	REG	TB	Country 1 Country 2
	A Policies	This section provides a snapshot of progress made at the level considered (GWP, Global or Regional) in terms of fostering changes of GWP Boundary Actors behaviour. These changes are measured against progress markers defined in GWP entities workplans. These Progress Markers are goalposts along the way to addressing Outcome Challenges identified under the 4 Goals of the GWP Strategy. The progress made are thus displayed by goals. The 3 levels assessment scale is explained below.			
	B Institutional roles				
	C Management Instruments				
	Cumulative GWP	The data are collected through an annual Progress Markers Report.			
	Total				
OUTPUTS / ACTIVITIES (Proxy)		Entity	REG	TB	Country 1 Country 2
	A Policies	This section provides a snapshot of Outputs / Activities implemented at the level considered (GWP, Global or Regional). The Outputs / activities are recorded against strategic elements (see GWP strategy) and GWP overall results framework.			
	B Institutional roles				
	C Management Instruments				
	Cumulative GWP	The data are collected through annual monitoring of GWP results framework indicators and Monthly Reports. Examples of types of information collected is given below.			
	Total				
INPUTS (Budgets)		Entity	REG	TB	Country 1 Country 2
	A Policies	This section is meant to capture the budgets invested in GWP at different levels. The budgets can be raised at different levels (global, regional, national, local) and can be tied or untied. The amount of globally raised untied funds allocated to GWP regions annually is 200,000€.			
	B Institutional roles				
	C Management Instruments				
	Cumulative GWP				
	Total				

The datasheet covers the monitoring of the following elements: (i) Impact; (ii) Key Water Governance Outcomes; (iii) Progress markers according to the 3 goals of the GWP strategy (intermediate outcomes between outputs and Key Water Governance Outcomes); (iv) Outputs / Activities.

Towards monitoring of Impact through key Water Governance Outcomes

Supporting material for Monthly Communication & Monitoring Reports: Key Water Governance Outcomes assessment grid

The types of “water governance outcomes” expected to be observed are listed below (ToolBox list). Different kinds of impact can be induced by these outcomes. For some it will be possible to estimate the number of beneficiaries, for others it will be easier to estimate the financial leverage or the value added. The table below provides some indication on the most likely impact area that should be considered depending on the type of outcome. The green color indicates relatively robust connections; the pink more fluid connections. Grey means no easy connections.

GWP Key Water Governance Outcomes level – Possible Impact Assessment Grid

		Governance Elements	Tools		NB of Beneficiaries	Investment Leverage	Value Added
A		Policies					
A	1	policies	A1.01	National water resources policy		√	
			A1.02	Policies with relation to water resources		√	
			A1.03	Climate change adaptation policies		√	
A	2	legal framework	A2.01	Elements of water law			√
			A2.02	Implementation and enforcement			√
			A2.03	Integrating legal framework for IWRM			√
A	3	financing and incentive structures	A3.01	Investment policies		√	
			A3.02	Grants and internal sources		√	
			A3.03	Loans and equity		√	
B		Institutional roles					
B	1	an organisational framework	B1.01	Reforming institutions			√
			B1.02	Transboundary organisations		√	
			B1.03	National apex bodies			√
			B1.04	River basin organisations		√	
			B1.05	Regulatory bodies and enforcement agencies			√
			B1.06	Service providers and IWRM			√
			B1.07	Strengthening public sector water utilities			√
			B1.08	Role of the private sector		√	
			B1.09	Civil society institutions and community based organisations	√		
			B1.10	Local authorities	√		
			B1.11	Building partnerships	√		
B	2	building institutional capacity	B2.01	Participatory capacity	√		
			B2.02	Capacity of water professionals	√		
			B2.03	Regulatory capacity	√		
C		Management Instruments					
C	1	water resources assessment	C1.01	Knowledge management			√
			C1.02	Water resources assessment			√
			C1.03	Modeling in IWRM			√
			C1.04	Developing water management indicators			√
			C1.05	Ecosystem assessment			√
			C1.06	Water footprint and virtual water concept			√

C	2	plans for IWRM	C2.01	National IWRM plans		√	
			C2.02	Basin management plans		√	
			C2.03	Groundwater management plans		√	
			C2.04	Coastal zone management plans		√	
			C2.05	Water infrastructure implementation and IWRM		√	
C	3	efficiency in water use	C3.01	Efficiency of use			√
			C3.02	Recycling and reuse			√
			C3.03	Efficiency of supply			√
C	4	social change instruments	C4.01	Education curricula	√		
			C4.02	Communication with stakeholders	√		
			C4.03	Information and transparency for raising awareness	√		
C	5	conflict resolution	C5.01	Conflict management	√		√
			C5.02	Shared water planning	√		
			C5.03	Consensus building	√		
C	6	regulatory instruments	C6.01	Water rights and allocation	√		
			C6.02	Water quality			√
			C6.03	Water services			√
			C6.04	Land use			√
			C6.05	Protecting freshwater ecosystem resources			√
C	7	economic instruments	C7.01	Water pricing			√
			C7.02	Pollution and environmental charges			√
			C7.03	Water markets and tradeable permits			√
			C7.04	Subsidies and incentives	√		√
C	8	information exchange	C8.01	Information management systems			√
			C8.02	Sharing data for IWRM			√
C	9	assessment instruments	C9.01	Risk assessment and management	√		
			C9.02	Environmental Assessment	√		
			C9.03	Social Assessment	√		
			C9.04	Economic assessment	√		
			C9.05	Vulnerability assessment	√		

Summary of expected impact estimations

Governance Blocks		NB of Beneficiaries	Investment Leverage	Value Added
A	Policies		✓	✓
B	Institutional roles	✓	✓	✓
C	Management Instruments	✓	✓	✓

Governance Areas		Tools	NB of Beneficiaries	Investment Leverage	Value Added
A	1	policies	A1.01	✓	
A	2	legal framework	A2.01		✓
A	3	financing and incentive structures	A3.01	✓	
B	1	an organisational framework	B1.01	✓	✓
B	2	building institutional capacity	B2.01	✓	
C	1	water resources assessment	C1.01		✓
C	2	plans for iwrn	C2.01	✓	
C	3	efficiency in water use	C3.01		✓
C	4	social change instruments	C4.01	✓	
C	5	conflict resolution	C5.01	✓	✓
C	6	regulatory instruments	C6.01	✓	✓
C	7	economic instruments	C7.01	✓	✓
C	8	information exchange	C8.01		✓
C	9	assessment instruments	C9.01	✓	