



# WEFE Nexus Science to Policy: Bridging the Gap for Sustainable Development

**Prof. Ali RHOUMA**  
Project Officer



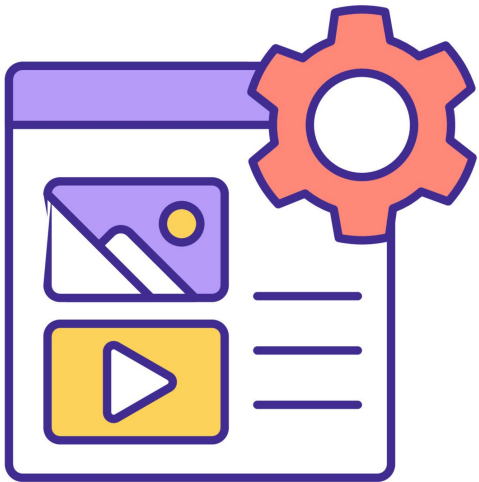
**PRIMA**  
PARTNERSHIP FOR RESEARCH AND INNOVATION  
IN THE MEDITERRANEAN AREA



PRIMA is supported under Horizon 2020,  
the European Union's Framework  
Programme  
for Research and Innovation

*Rabat, Morocco*  
*6 June 2023*

# Content



**Science advances in WEF E Nexus**

**Challenges in translating WEF E Nexus Science to policies**

**Insights from PRIMA Funded Projects**

**Conclusion**

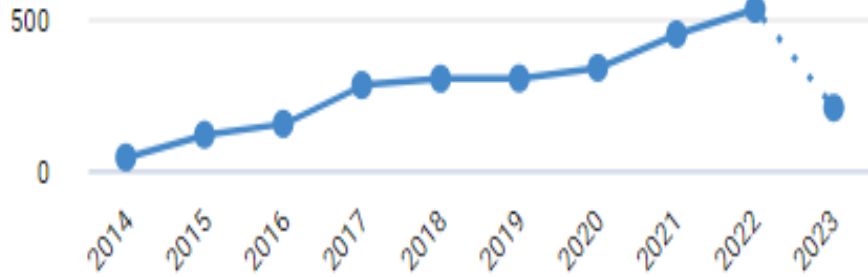
# WEFE Nexus has had Strong policy and societal underpinnings



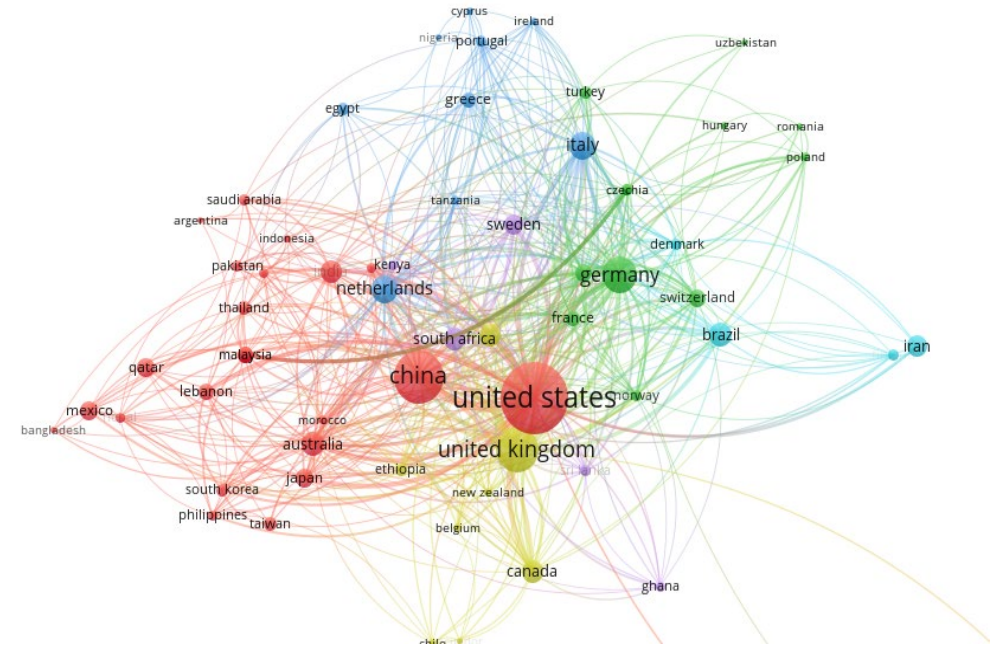
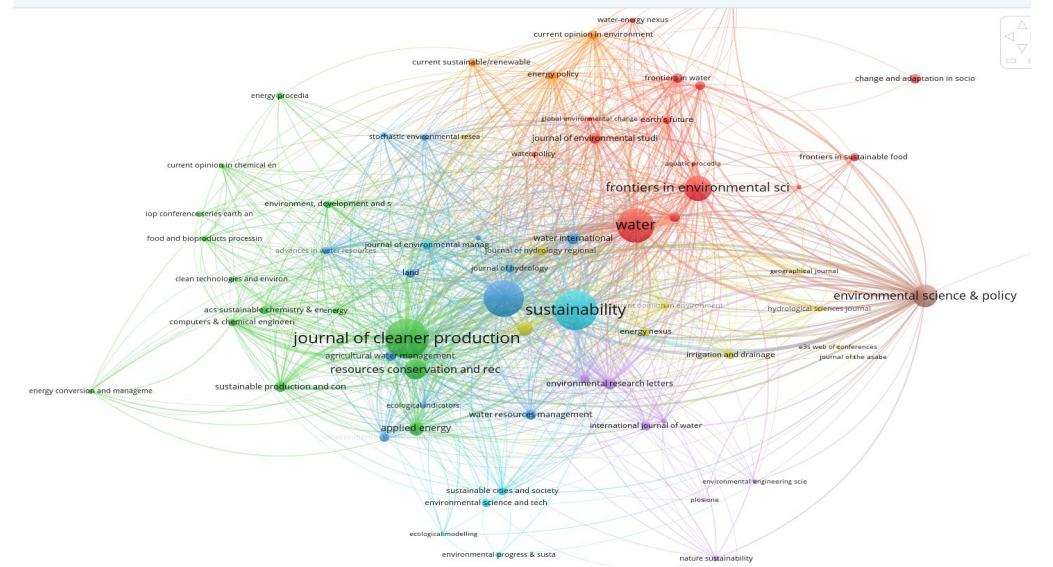
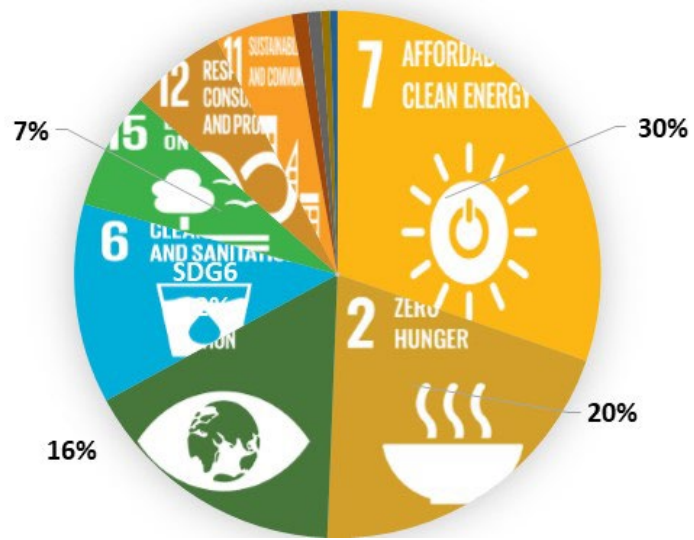
Strongly advocate for integrative frameworks that address the interlinked causes of WEF security

# WEFE Nexus Science advances and creates knowledge

> 2700 documents  
70% Articles



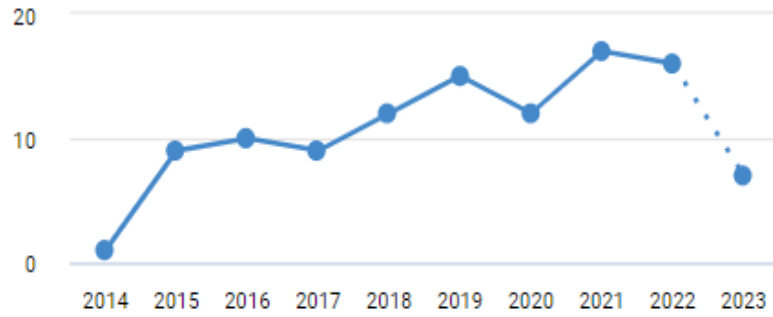
## 182 Governance and Policies





# Interface WEF Nexus Science and Policy

109 documents



Renewable energy technologies



Renewable Energy Policies

Modeling



Evidence based decision making

Agricultural practices



Sustainable Agriculture and Food Security Policies:

Scientific research on climate Change

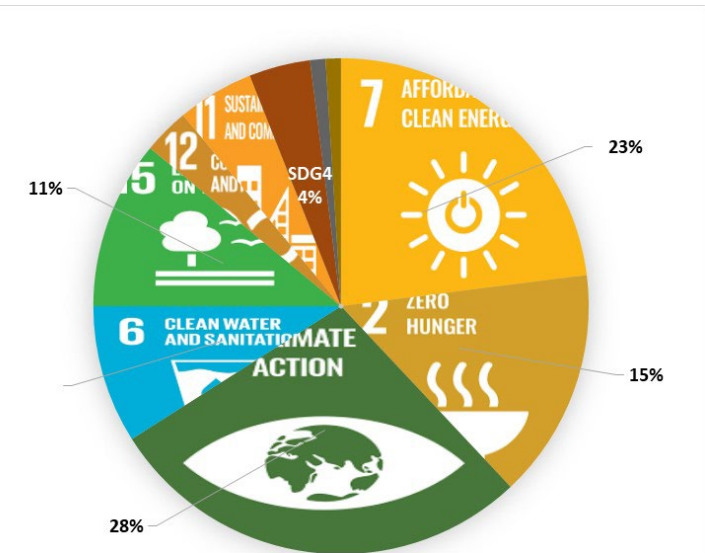


Climate Change Adaptation and Resilience Policies

Scientific research on ecosystem services

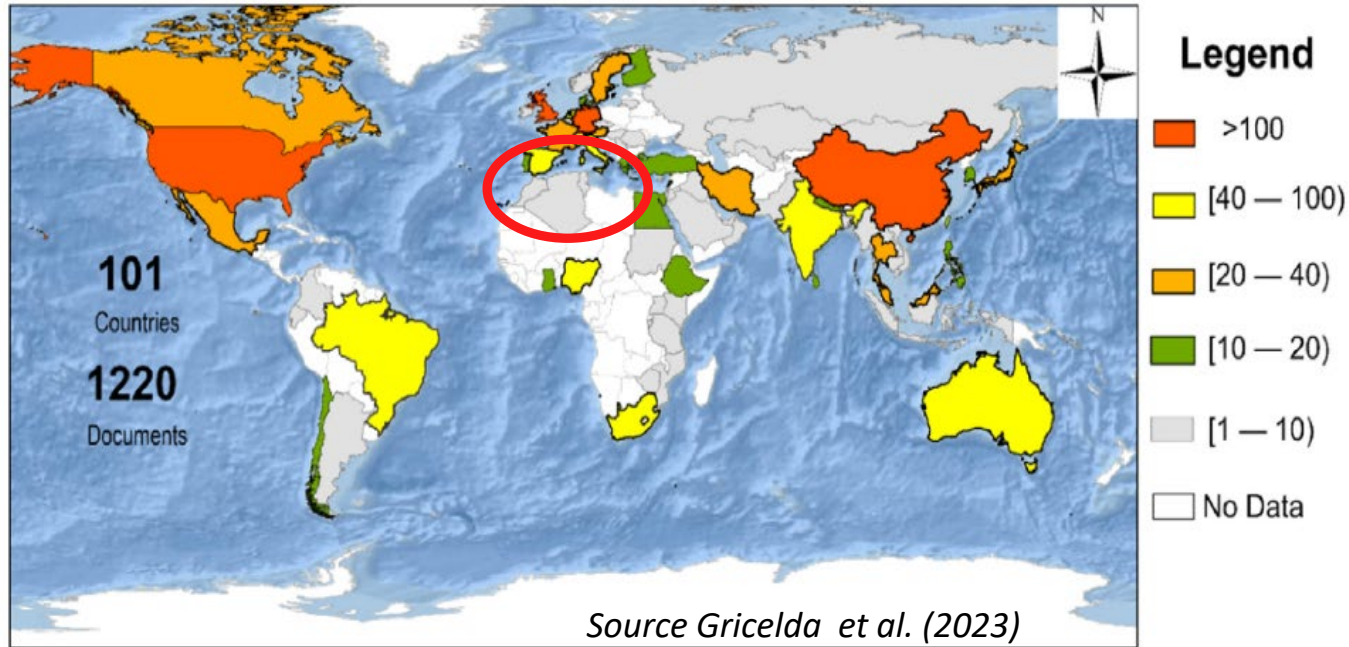


Ecosystem-based policies



# WEFE Nexus Science and Climate Change

## Articles Nexus WEFE+Climate Change



### Weak integration of WEFE

- Nationally Determined Contributions (NDCs)
- National Adaptations Plans

Maladaptation



### 12 Indicators (24 countries)

- Food security
- Water Management

Monitoring tool for decision making on WEFE in the Med. region

Study is a great support to for decision makers

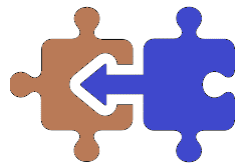
# WEFE Nexus science can inform and support circular economy policies



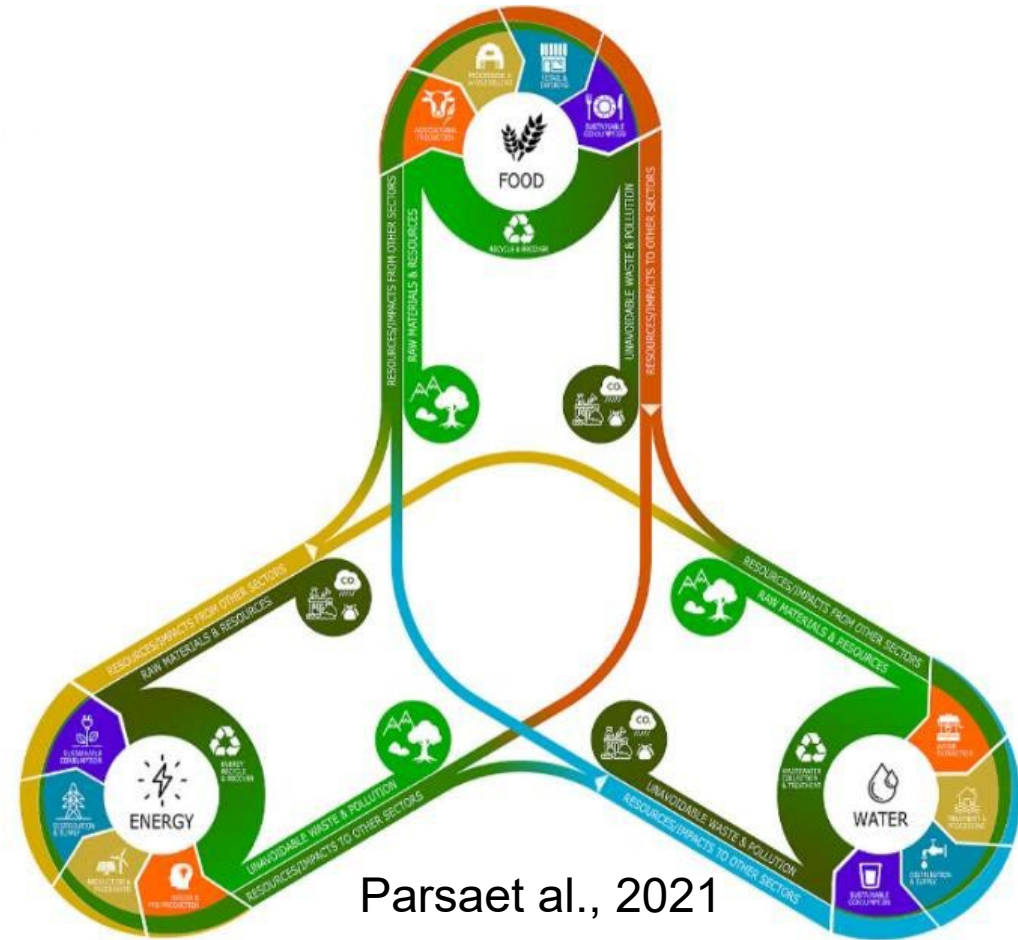
Resources efficiency



Innovation and technologies: Waste management/Valorisation

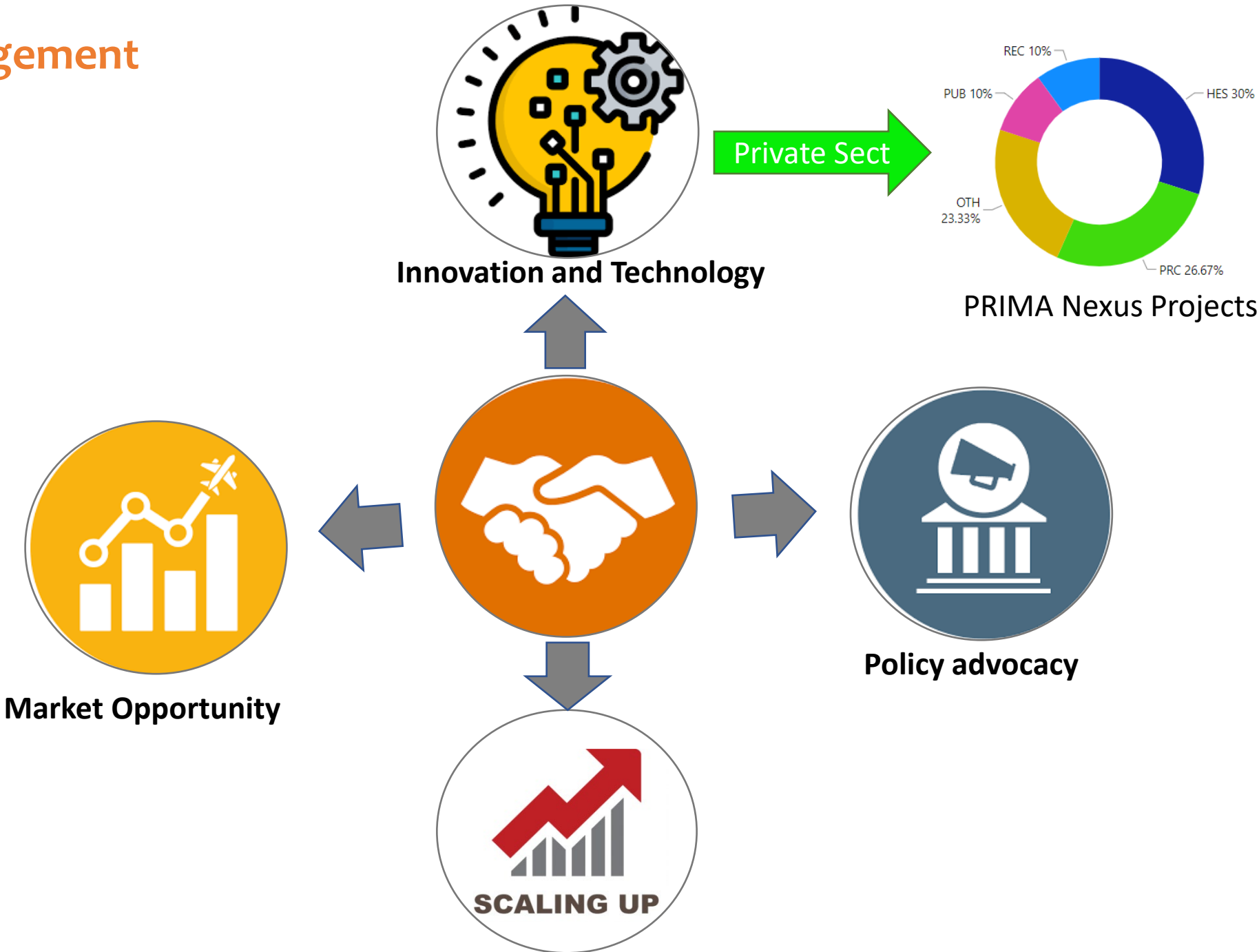


Policy Integration and Governance



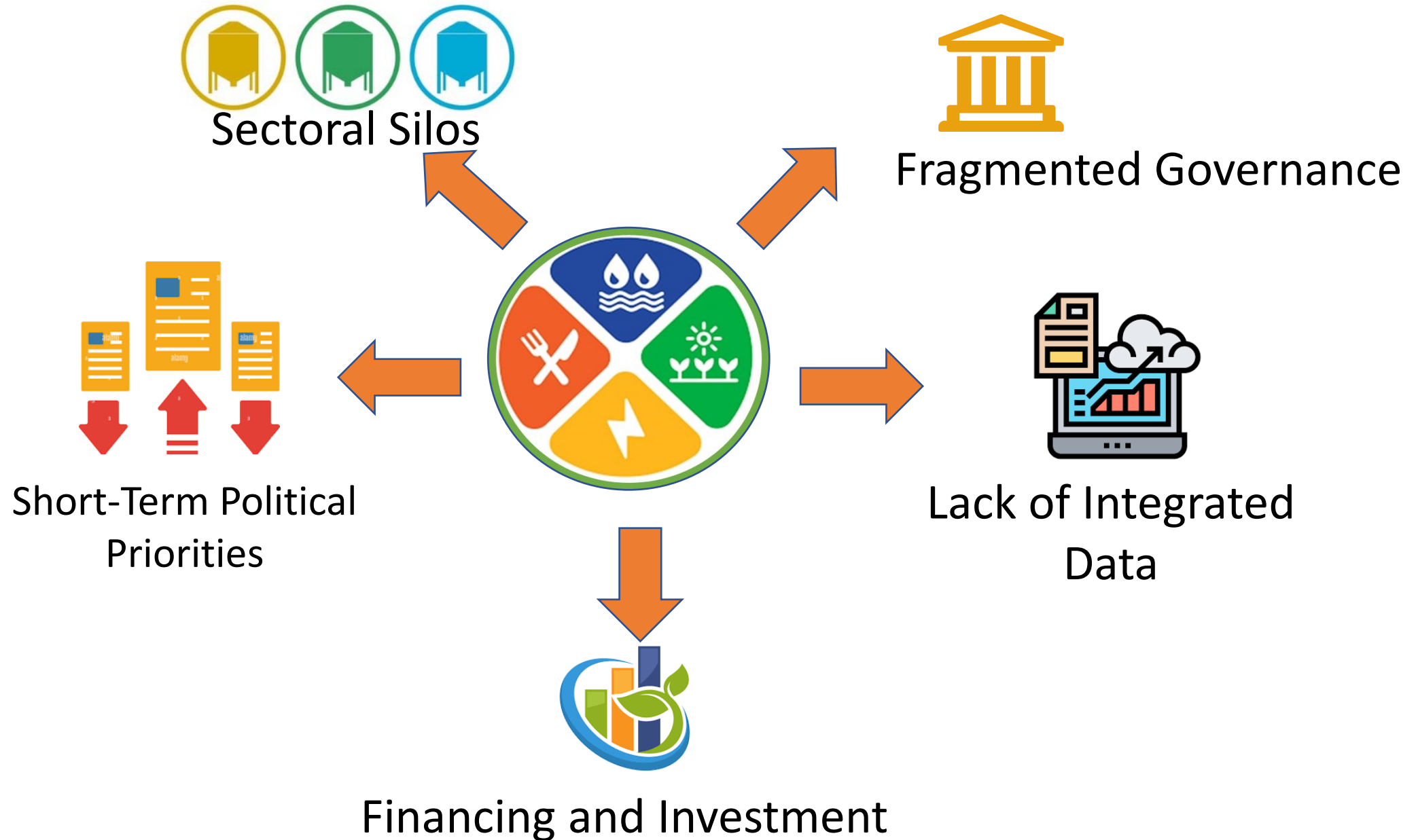
Parsaet al., 2021

# Private sector engagement in WEFE Nexus





# Challenges in translating WEF E Nexus Science to policies

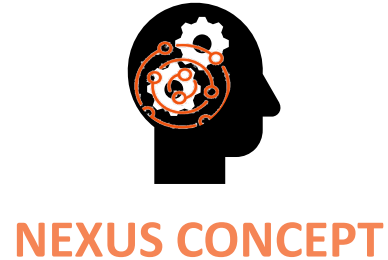


# Possible measures for bridging WEF Nexus Science to policies



# Nexus in Action: PRIMA's Strategy for Moving from Nexus Thinking to Nexus Doing

- ❖ Importance of transitioning from theoretical understanding to practical implementation



- ❖ PRIMA Programme relevance to the WEF Nexus, in particular taking into account the Environment sector aligning with EU Green Deal and the UfM Environment Ministerial Declaration deliverable [2030 GreenerMed Agenda](#).
- ❖ Social-ecological systems
- ❖ Health Component (Water Quality)



# PRIMA WEFE Nexus solutions



**Water Efficient technologies**



**Renewable Energy Integration**



**Desalination Technologies**



**Agriculture Practices**



**Circular Economy**



**Nexus WEFE Modeling**



**Stakeholder Engagement and Governance**



NB. PARTNERS  
**113**

NB. Projects  
**10**



BUDGET (M€)  
**26.17M**





# PRIMA's Contributions to WEF E Nexus Doing

## >30 Demonstration sites

- Technical and Engineering solutions
- Nature based solutions
- Governance solutions

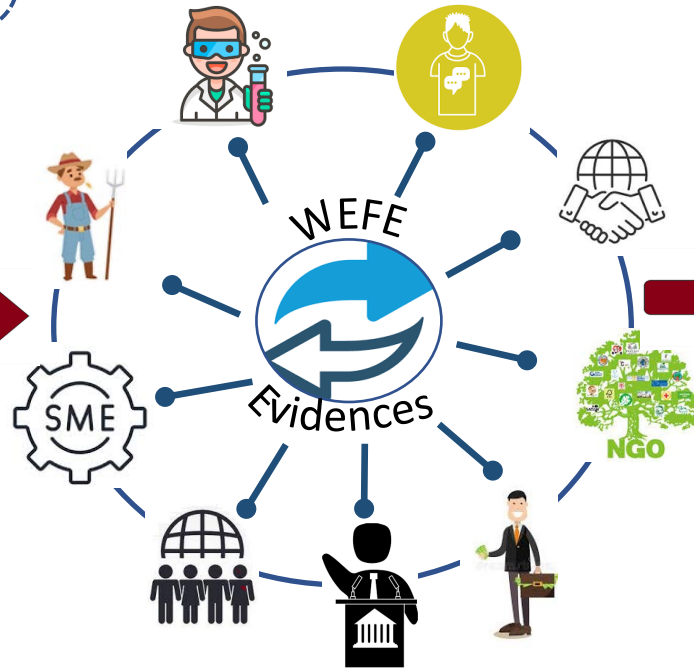


# Nexus Community of Practice

[2021 WEFE Nexus Science Advances Conference](#) highlighted the need for a Mediterranean WEFE Nexus Community of Practice (NCoP)



**Gather stakeholders**



**Develop**



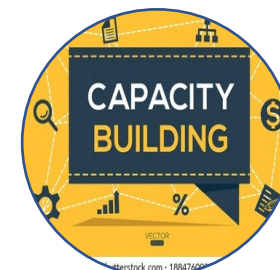
**Propose**



**Engage**



**Capacity building**



**Support**  
Implementation  
Nexus WEFE

**Synergies with other established platforms**  
(As an Example the Sustainable Food Systems Multi-Stakeholder platform)

# Conclusion

- ❖ The link between the WEF E Nexus and policy-making remains weak (Involvement of policy-makers in research design)
- ❖ Large scale demonstrators implemented by PRIMA projects  
Could help governments to shape/integrate policies
- ❖ A Nexus WEF E community of practices could be become a powerhouse of sustainable solutions, fueling the transition to a green economy and paving the way for the achievement of SDGs
- ❖ By integrating the WEF E Nexus approach within policies, governments can promote sustainable and resilient development

Ali RHOUMA

*Project Officer- PRIMA Foundation*

ali.rhouma@prima-med.org



# PRIMA

PARTNERSHIP FOR RESEARCH AND INNOVATION  
IN THE MEDITERRANEAN AREA

# Thank you



PrimaProgram



@PRIMAProgram



Prima Program



Prima-med YouTube









*The SIMTAP prototype at UNIPI (Pisa, Turkey). The greenhouse of the prototype (top) and a general view of the aquaponic system (bottom),*