

Measures for Biomass and Forestry in the Drin River Basin

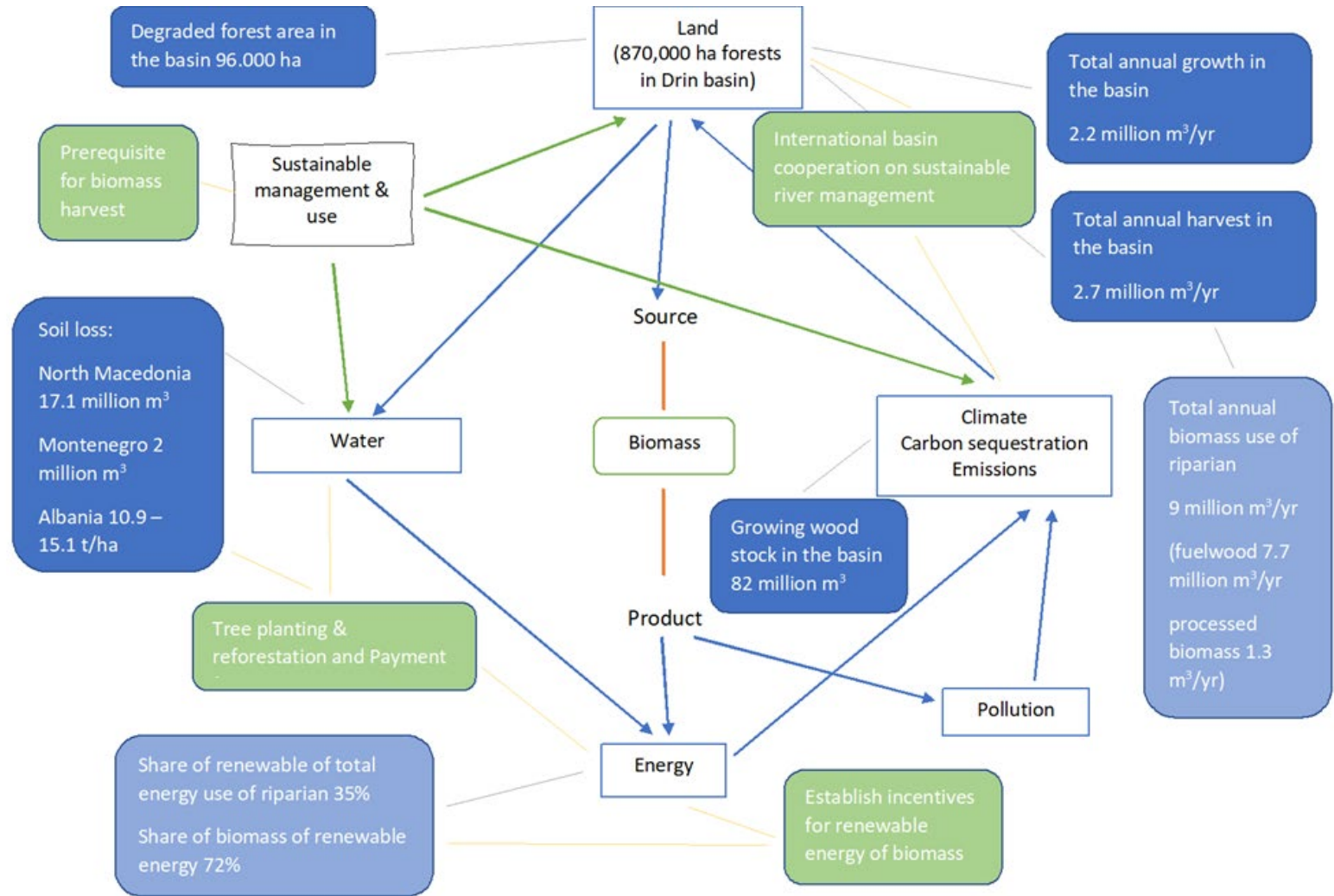
Connect Natural Values and People Foundation

December 2020

Introduction biomass & forestry study

- One of the sector studies for Drin Basin Nexus.
- Analysis of Biomass and Forestry issues in the Drin River Basin
- Focus on interdependencies water, energy, forestry and biomass
- Recommendation and measures

Concluding synthesis



Focus

From the synthesis:

- Water (erosion)
- Land (sustainable forest management)
- Energy (renewable – biomass)
- Climate (carbon storage)

Link with Drin SAP:

1. Especially goal 2: Establish conditions for the sustainable use of water and its supported ecosystems
2. And goal 3: Develop cooperation measures to minimize risks of disasters due to extreme natural phenomena and climate change by 2030

All objectives within these goals.

Recommendations and measures [the basis]

1. Sustainable management natural resource is a pre-requisite, jointly with
2. River basin and regional approach, cooperation and communication needed
 - Cross sectoral: forestry, agriculture, water management, energy
 - Capacity development; training, extension service and practices of sustainable forest/natural resource management
 - Embedded it in policies and regulations
 - Sustainable forest management practices (small scale forestry, reforestation, erosion control measures)
 - Payment for Environmental Services (land consolidation, sustainable forest management, reforestation, erosion control, sustainable water use by downstream users, energy, agriculture, drinking water)

Recommendations and measures [following]

1. Climate change mitigation through carbon sequestration
 - Reforestation and sustainable forest management (sustainable harvest)
 - Prioritize sustainable wood products above wood biomass (higher economic value and climate mitigation effect)
 - Promote biomass as a efficient energy source (replacing firewood and fossil fuels)
 - Availability of biomass energy systems and service including for rural areas
2. Establish incentives for renewable energy of biomass
 - Promote and support improved heating systems
 - Include gender perspective in value chain development for biomass
 - A pro-poor initiatives e.g. obtaining seasoned firewood or shifting to biomass systems

End

- Thank you
- Questions

- Voislav Todorov: voislav.todorov@cnvp-eu.org
- Peter Kampen: peterkampen@yahoo.com