



# INTRODUCTION TO THE NEXUS APPROACH & THE NEXUS ASSESSMENT PROCESS IN THE DRIN RIVER BASIN

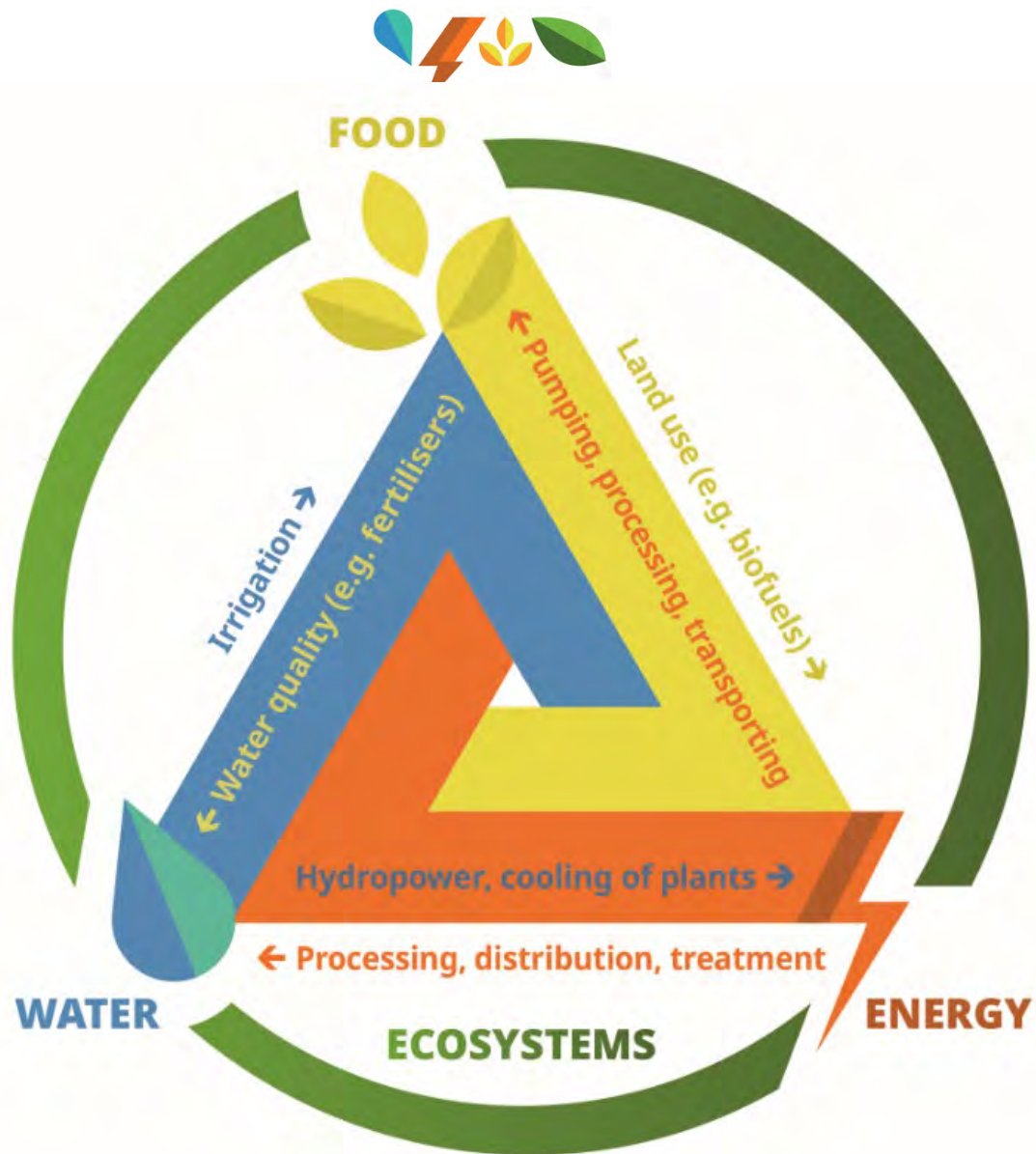
Gender Workshop in Drin  
Online, 12 October 2021  
Tassos Krommydas, GWP-Med





# Nexus Approach – an introduction

- To optimise overall management of water-energy-food resources while preserving healthy ecosystems
- ✓ Move beyond traditional isolated sectoral thinking - adopt integrated & coordinated cross-sectoral approach
  - In institutional settings, policy making, management practices
- ✓ Better understand the complex and dynamic relationships across sectors
  - Identify interlinkages, trade-offs and synergies
- ✓ Reconcile sectoral interests competing for the same scarce resources – opportunities & solutions with cross-sectoral benefits





## SEE Nexus Project - Brief

- Financed by ADA – Implemented by GWP-Med in partnership with UNECE
- Promote the Nexus approach in SEE – catalyse related actions
  - Mapping of level of integration (institutional, policy etc)
  - Enhanced capacities and raised awareness
  - Assessments to identify interlinkages among sectors
  - Concrete suggestions for priority interventions
- SEE-wide Regional Component (2017-2019)
- Focused activities in (2020-2021):
  - Transboundary basins of Drin and Drina rivers
  - Albania



# Nexus Assessment process in the Drin basin

- ✓ Drin Core Group (DCG) steers activities, in framework of Drin CORDA process, aligned to SAP
- ✓ 2018-2019: Phase I Nexus Assessment in context of TDA (GEF “Drin Project”) - Key interlinkages through TB consultation process
- ✓ 2020-2021: Phase II Nexus Assessment
  - to understand and explore interface of HPP operations and flood events & damages
  - Mapping of biomass/forestry interlinkages & options to enhance coordination



# Project activities in the Drin basin

- Participatory consultation process
  - DCG, Stakeholders' Conferences, Experts' Working Groups
  - Synergies with related ongoing projects
- Two capacity building workshops
  - Forest Management and water regulation
  - Climate-Land-Energy-Water integrated modelling
- Two gender workshops (Dec 2020 & Oct 2021)
- Project Documents / Investment fiches for 2 priority interventions
- Nexus Roadmap – assisting in the operationalisation of cross-sectoral activities in Drin SAP



**Thank you for your attention!**

[Tassos@gwpmmed.org](mailto:Tassos@gwpmmed.org)