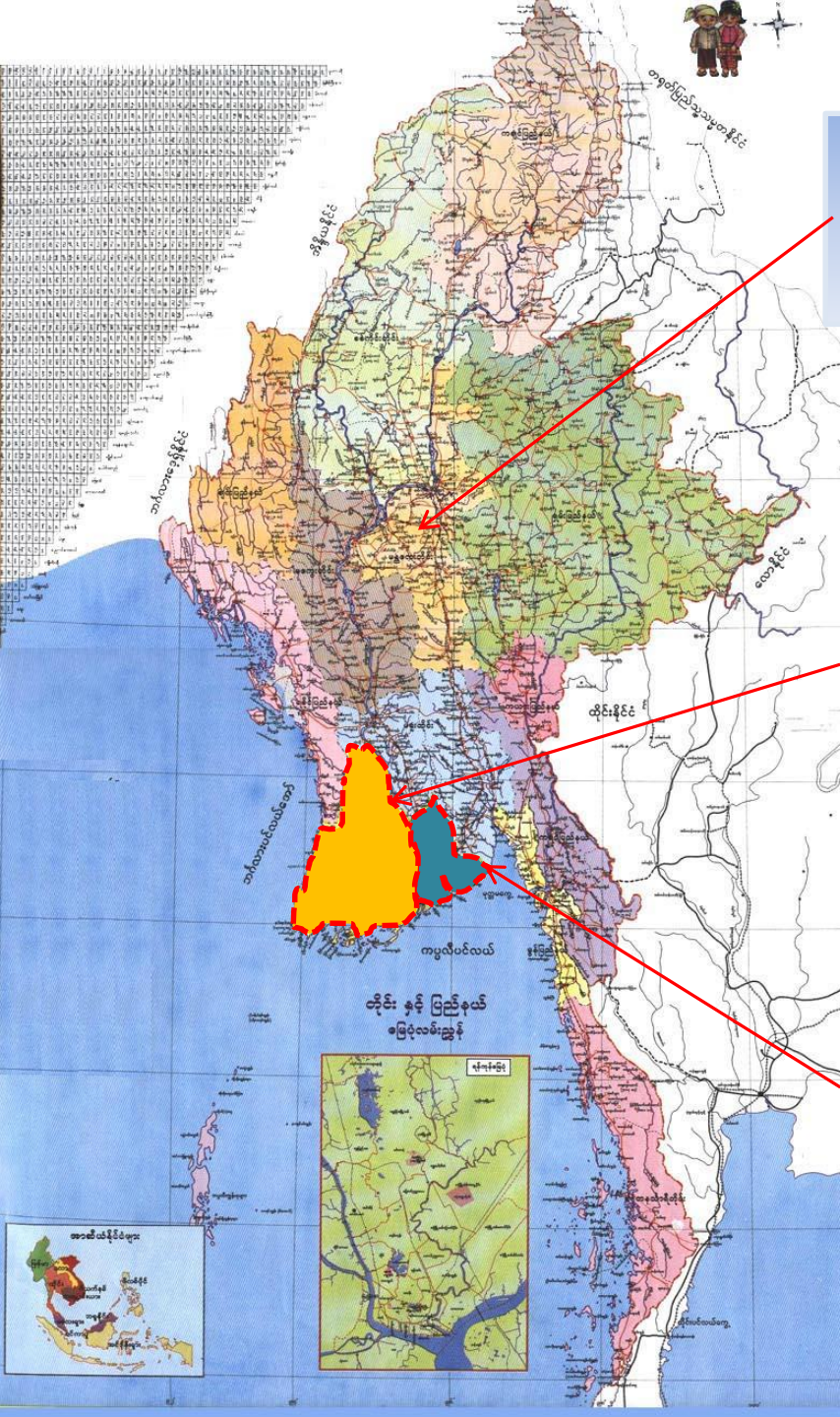




DELTA Interventions in Ayeyarwady Delta



Country Myanmar
Area : 676,577 Sq-Km
Population : 51,419,420

Ayeyarwady Region
Area : 35,032 Sq-Km
Population : 6,175,123

Yangon Region
Area : 10,170 Sq-Km
Population : 7,355,075



Upper Delta

- 8 - 17 m above MSL
- Ayeyarwady distributary
- danger of riverine floods,
- Dykes are very important
- moderate rainfall

Middle Delta

- 4 - 6 m above MSL
- riverine and localized floods,
- fresh water, tidal affected,
- Agriculture, fishing industry

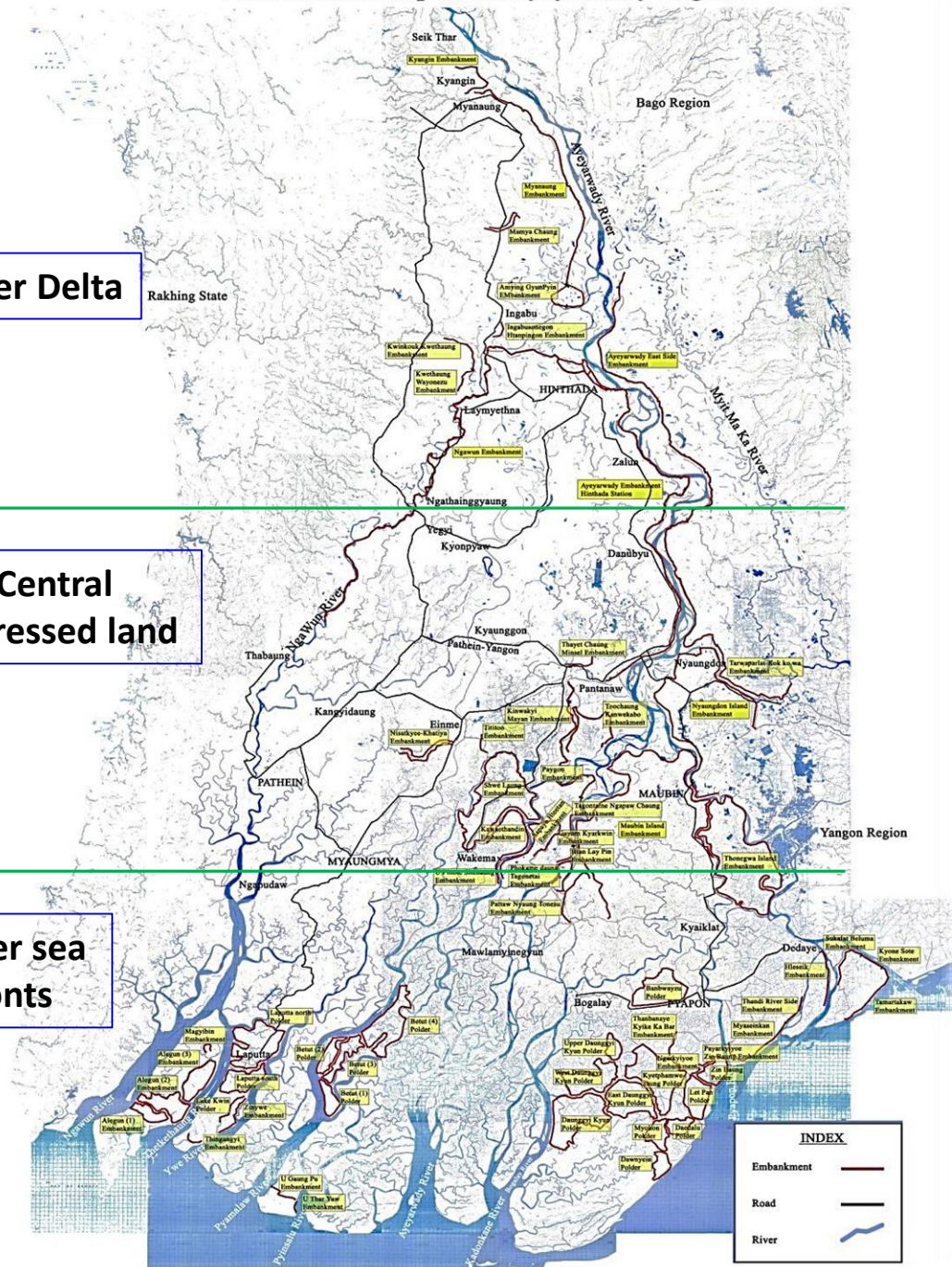
Lower Delta

- ❖ Low lying area 1.5 - 2.5 m
- ❖ Sea Water Intrusion
- ❖ High Rainfall
- ❖ Polders, coastal dikes and sluices established
- ❖ Scarcity of fresh water
- ❖ Disaster prone

Upper Delta

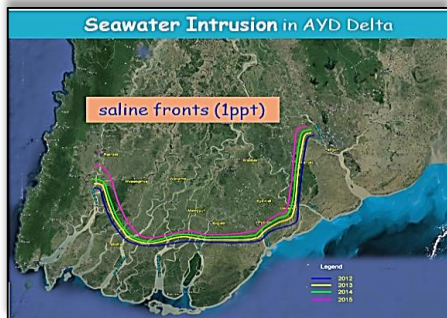
Central depressed land

Lower sea fronts



Important Issues

- Salinity Intrusion
- Lack of Infrastructure and asset management
- Mangroves and delta degradation
- Adverse water and environmental quality
- Public health
- Flooding and lack of drainage
- Livelihood limitations
- Lack of knowledge and innovation



Opportunities

- Some of the processes, especially **legislation and policy frameworks**, **cannot be initiated** by the community alone and require the government's initiative and intervention
- **Close involvement** of Myanmar authorities on all relevant government levels and of all relevant stakeholders
- Use a **step wise approach and new methods** for stakeholder involvement need to be used
- By using a **mutual gains approach and visualization methods** to promote understanding of the situation and to promote productive discussions
- **Capacity building needs** to be included to promote a real transition towards an integrated and adaptive approach for the Ayeyarwady Delta area
- To provide capacity building through “**learning by doing**”



Lesson Learnt & Best Practices

- weakness in management
- insufficient training to officials and local people
- allowing the voluntary group to real implementation without going under training
- annual riverine floods help clean the farm lands and replenish the ground with nutrients
- overflowing rivers are welcoming events as they facilitate the fish spawning process
- Functioning of Retarding basins
- Strengthening of Flood protection dykes and River banks
- Enhancing Polder system
- Improving Navigability



How did the countries develop their Delta?

❑ Flood Resilience Delta

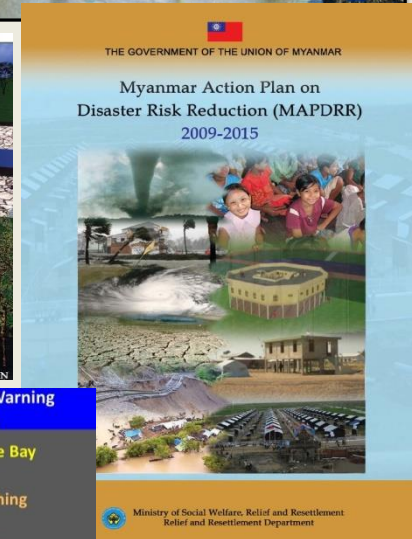
- Flood protection works
- Flood fighting practice

❑ Food Secure Delta

- Polder system for agriculture development
- Irrigation and drainage

❑ Climate Resilience Delta

- After Nargis Cyclone, evacuation of local people - cyclone shelters, drinking water ponds and storm shelter embankment (Hillock) were built
- Early warning system
- Awareness raising for local people
- Myanmar Action Plan on Disaster Risk Reduction (MAPDRR)

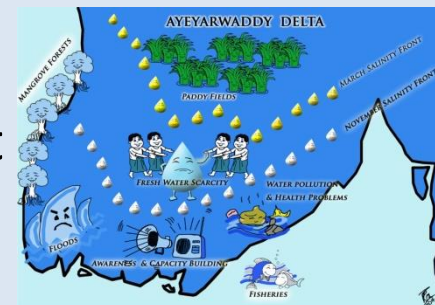


Color Code used for Storm Warning Cyclonic Storm Event

- **Yellow** – Cyclonic storm forms in the Bay of Bengal
- **Orange** – Cyclonic storm is approaching Myanmar Coast
- **Red** – Cyclonic storm is going to cross Myanmar Coast within 12 hours
- **Brown** – Cyclonic storm is crossing Myanmar Coast
- **Green** – The remnant of Cyclonic Storm is dissipated

Implemented / Implementing Delta Projects in Ayeyarwady Delta

- **Development of Integrated Ayeyarwady Delta Strategy**
Implemented with grant aid provided by Dutch Government
Follow up Phase will be expected in the coming period



- **Adoption of Adaptive Delta Management**

With regard to this, the ADM is outlined in the Integrated Ayeyarwady Delta Strategy and to be followed in the real implementation

- **Establishment of Integrated Agriculture and Irrigation Development Master Plan (EIAIDMP) for Ayeyarwady Delta**

Being implementing with grant aid provided by KOICA with 3 years project period and main concerned sector is Agriculture, Livestock and Irrigation

- **Project for Irrigation Development of major grains producing areas in the Ayeyarwady Delta**

Being implementing for feasibility study with technical and financial assistance provided by Chinese government through Lancang-Mekong Water Cooperation Center

Thank you
for your attention

