





a water secure world

Learning Deltas Asia Initiative (LDAI) – Innovative Approach to Delta Resilience

LDAI Phase II Inception Workshop
6-7 December 2018, Yangon,
Myanmar

Lal Induruwage, Regional Coordinator, GWP SAS

BACKGROUND

- 
- The LDAI started in June 2017
 - Scoping Phase - to assess and understanding of challenges and opportunities in the participating countries, namely, Bangladesh & Myanmar
 - Phase 2 – Cap-Net and GWP joint effort to place this initiative to meet the capacity development need and demand in the Delta countries.
 - Bangladesh and Myanmar considered as ‘learning territories’
- 

LDAI'S MAIN CHARACTERISTICS

OBJECTIVES

The LDA objective is to build up an **effective SSC learning and innovation Initiative** that accompanies **rural and urbanizing deltas** in better connecting three processes that often unfold in relative isolation:

1. Enable **IWRM** planning and implementation **Adaptive Delta Management**;
2. Engage **broader sectoral integrated and inclusive societal development** processes that guide socio-economic resilience; and
3. **Support the planning and implementation of investment projects** through innovative learning and knowledge processes building commitment and capacities

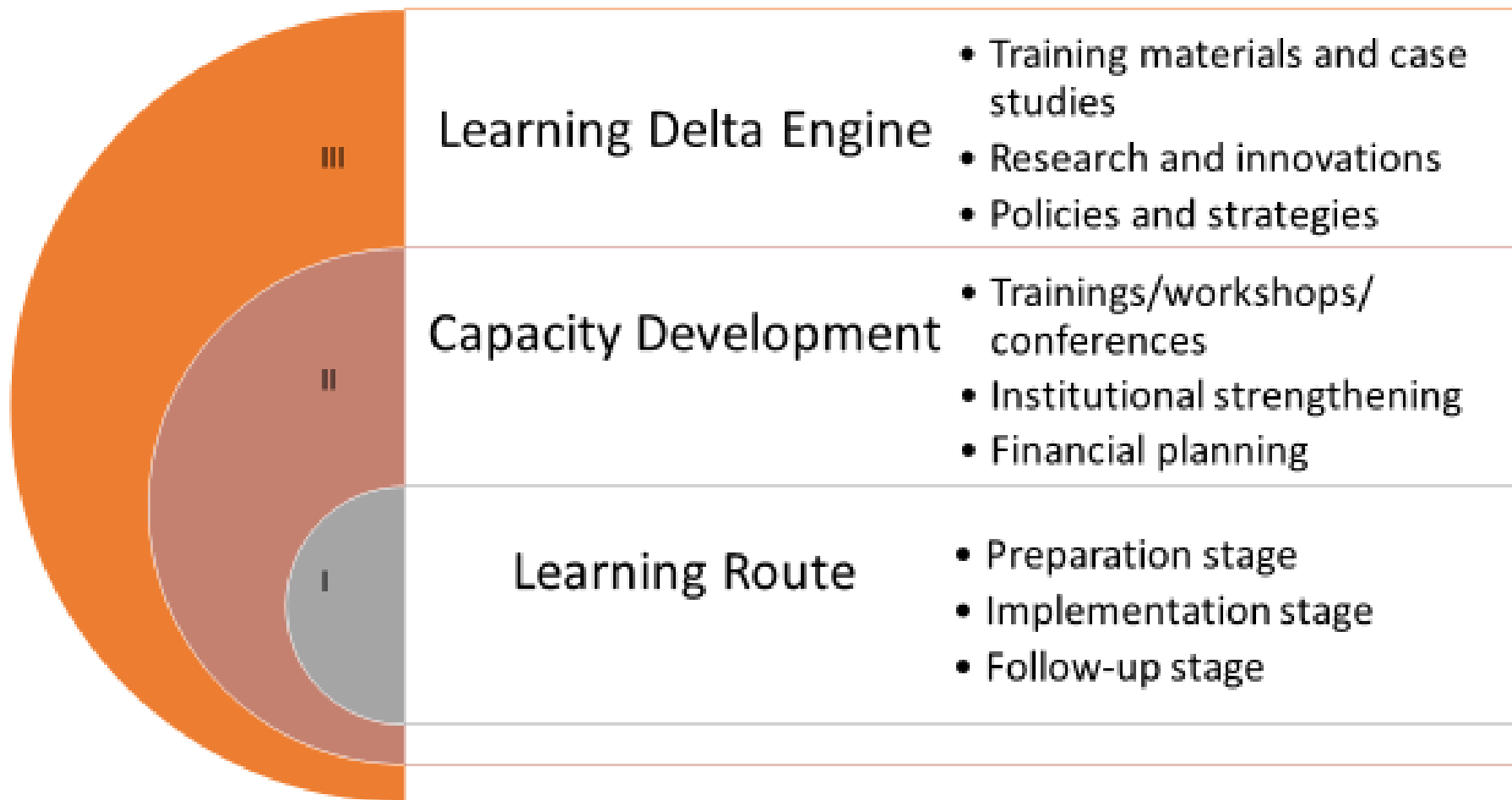
GEOGRAPHIC SCOPE

COUNTRIES	DELTAIC AREAS	MAIN CITIES	RELEVANT ISSUES
Bangladesh	Ganges – Brahmaputra – Meghna Delta	Mongla, Chittagong	<ul style="list-style-type: none"> • Flooding/droughts • Saltwater intrusion • Land subsidence • Erosion/sediment starvation • Infrastructure on soft soils
Cambodia	Tonlé Sap, Mekong Delta (transboundary), Bassac River	Phnom Penh	
China	Bohai Sea, Yangtze River Delta, Zhujiang Delta	Tianjin, Shanghai, Guangzhou	
India	Calcutta, Chennai, Mumbai		
Indonesia	Mahakam Delta	Samarinda, Jakarta	
Pakistan	Indus River Delta	Karachi	
Philippines	Pasig River Delta	Manila	
Myanmar	Ayeyarwady Delta	Yangoon, Patheingyi	
Singapore	Singapore River	Singapore	
Thailand	Chao Phraya River Delta	Bangkok	
Vietnam	Mekong Delta (transboundary), Red River Delta	Ho Chi Minh, Hanoi	

The LDAI use **tailor made learning tools and promote experiential learning**. Through these tools, the **knowledge from the practice** will be capitalized and partners will gain direct access to field-tested, innovative solutions and develop the capacities to sustain learning and change in time:

- 1. Network development**, by acknowledging and bringing together multiple stakeholders through face-to-face activities;
- 2. Strengthening of national organizations**, by equipping them with advance knowledge management and knowledge sharing skills;
- 3. Documentation and dissemination** of ADM best practices and innovation.

Three steps in LDAI Phase 2



Phased Approach

Short term (February to December 2017)

- Inception and conception of SSC initiative with increasing participation of ADM stakeholders in Asia.
- Pilot: Scoping Phase of a first knowledge exchange between Myanmar and Bangladesh ADM stakeholders.
- Pilot: First Learning Route in Bangladesh, including participative design, cofinanced implementation and peer to peer follow up.

Mid term

- Organize a number of exchange and learning events between several countries
- Expand from the Bangladesh and Myanmar pilot to other deltas in Asia
- Strengthen policy dialogue and position ADM in the countries' agendas.
- Enabling Myanmar and Bangladesh for organizing peer to peer learning
- Partnering with investment projects (WB, ADB, IFAD, etc.) to pilot or scale up ADM innovations and best practices in Myanmar and Bangladesh

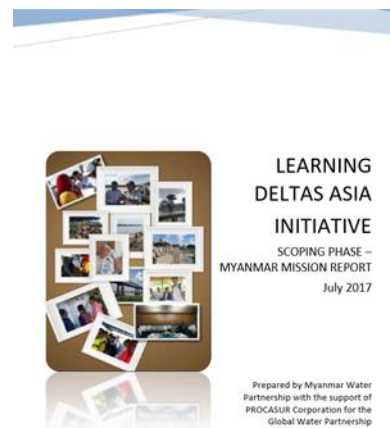
Long term

- ADM mainstreamed in public policies and programmes in various regions.
- Horizontal cooperation (SSC-SSTC) between ADM practitioners.
- DC/GWP/CWP/DA country actions links shorten
- CWPs/DAs services to members, partners and stakeholders diversified and strengthened
- Learning Deltas is a global and open Initiative, anchored locally

LDAI Scoping Phase (Phase 1) Outputs

- LDAI Scoping Phase Report:

https://www.gwp.org/globalassets/global/gwp-sas_files/ldai/8.1-final--report-scoping-phase-ldai.12-18--17.clean---doc.pdf



- LDAI Myanmar Mission Report:

<https://www.gwp.org/contentassets/99ab8af8a32f4b449ef9b3d61a5a2147/ldai-myanmar-mission-report.310817-final.pdf>

LDAI Scoping Phase (Phase 1) Outputs



- Bangladesh Mission Report-
https://www.gwp.org/contentassets/7cba3c55ba6e43cd96213c93835ca8da/ldai-bangladesh-mission-report_bangladesh-final.pdf

Bangladesh and Myanmar – Key learning territory and identified areas with prototypical hydrological characteristics known as **hotspots**

Bangladesh Learning Territory

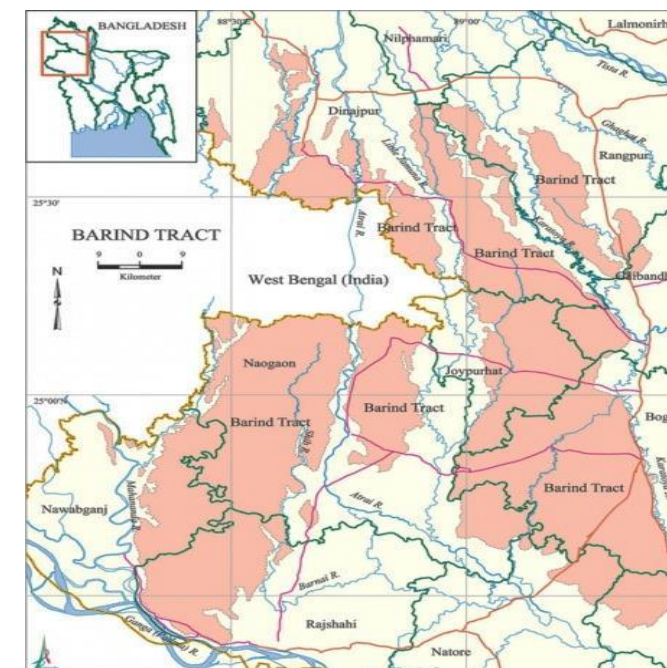
1. Coastal Area
2. Barind Tract Area

Myanmar Learning Territory

1. Myanmar Ayeyarwady Delta and River Basin



Map of the coastal zone of Bangladesh



Locations of Barind area

Five Learning Priorities in Bangladesh – Myanmar Learning Agenda

- Tidal river management.
- Polder management
- Preparedness for future Climate Change and mitigation measures
- Mangrove conservation and management
- Integrated water resources management



Mangrove Forest
Education Center



Nyaung Done Town river bank
protection works

1. LDAI - Phase 2 inception meeting

- In December 2018 – Starts today,
- Setting-up the LDAI project level steering committee, declaration of LDAI learning agenda in line with national planning of Deltaic countries, and enhance relevance and stakeholder cooperation for LDAI.

2. Learning route implementation in Bangladesh and Myanmar

3. Learning Materials development under 5 learning priorities

4. Delivery of training programmes, experts workshop

5. Establishment of Learning Delta Engine

THANK YOU